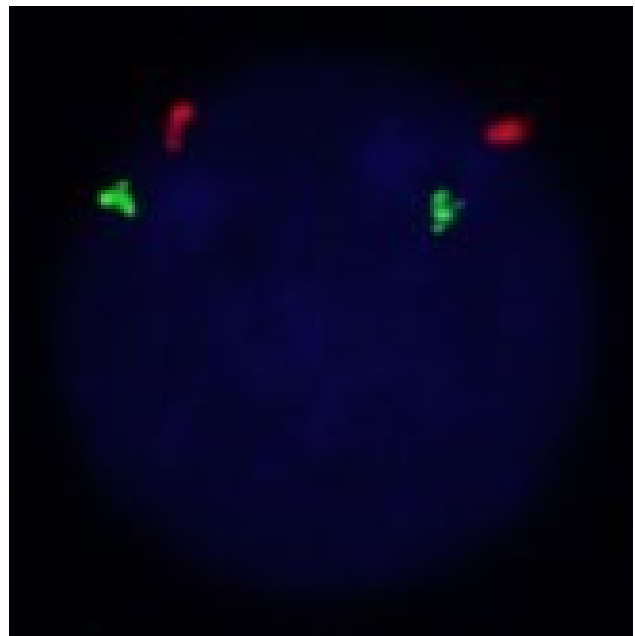
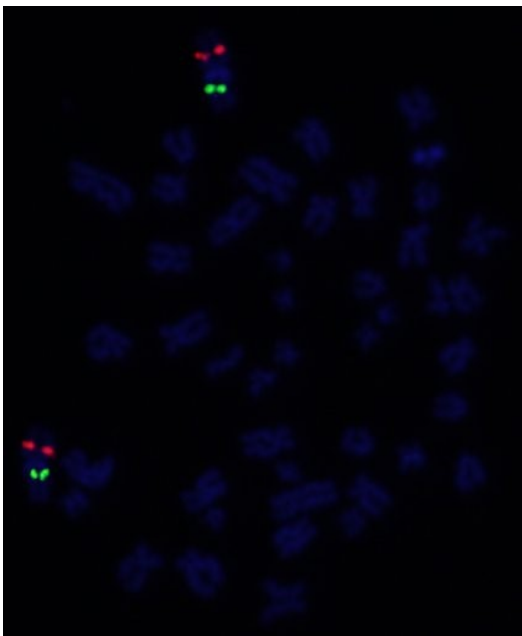
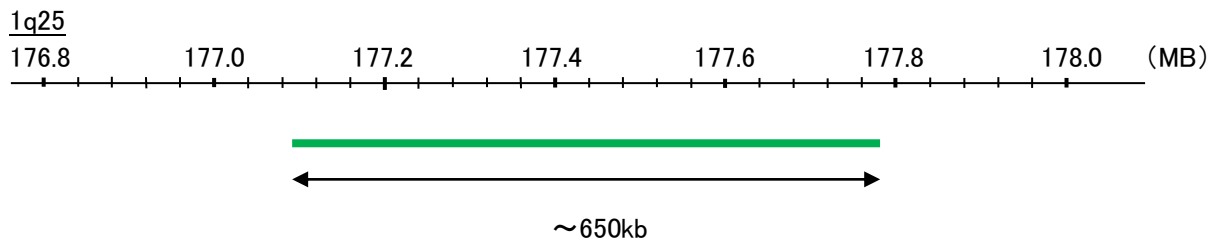
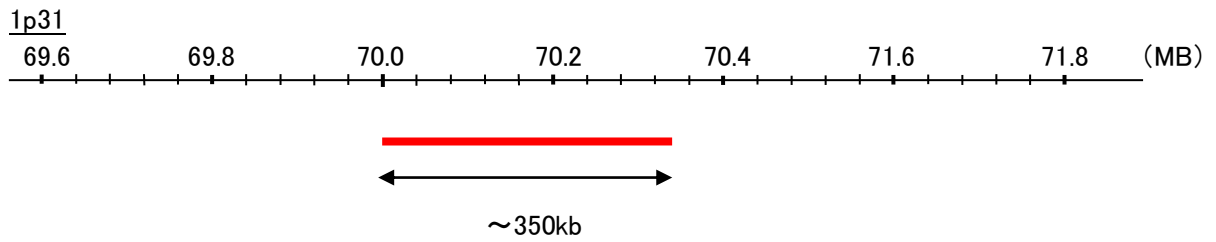


Probe 1p31/1q25 Dual Color FISH Probe
Product No. GC183

1p31
Probe Size Approximately 350kb
Fluorophore TexRed
Location 1p31

1q25
Probe Size Approximately 650kb
Fluorophore FITC
Location 1q25.2



Representative images of normal human cell (lymphocyte) stain with the dual color FISH probe. The left image is chromosomes at metaphase, and the right image is an interphase nucleus.