

Probe SP7/CEN12p Dual Color FISH Probe
Product No. GC188

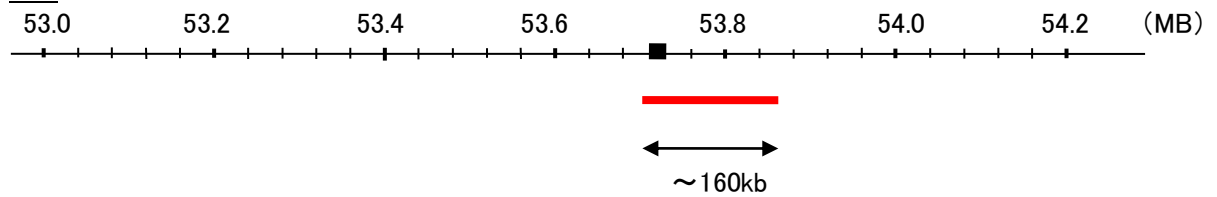
SP7

Probe Size Approximately 160kb
Fluorophore TexRed
Location 12q13.13
Also known as OSX; OI11; OI12; osterix

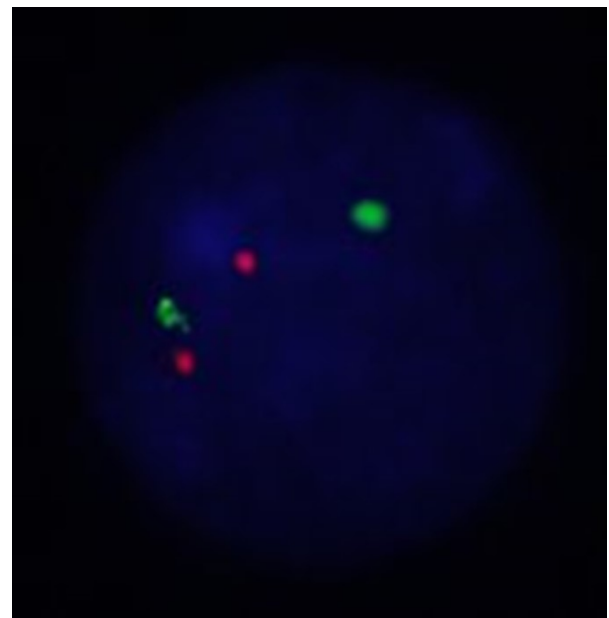
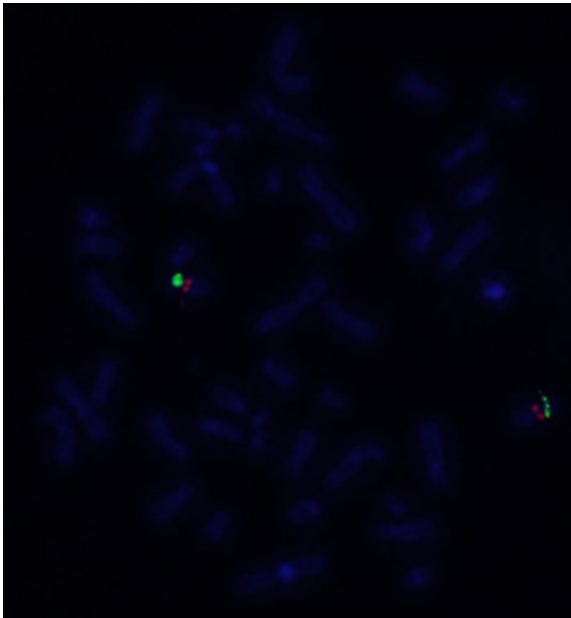
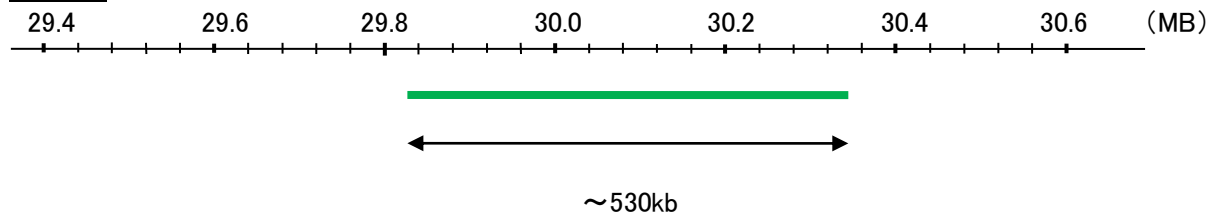
CEN12p

Probe Size Approximately 530kb
Fluorophore FITC
Location 12p11.22

SP7



CEN12p



Representative images of normal human cell (lymphocyte) stain with the dual color FISH probe. The left image is chromosomes at metaphase, and the right image is an interphase nucleus.