

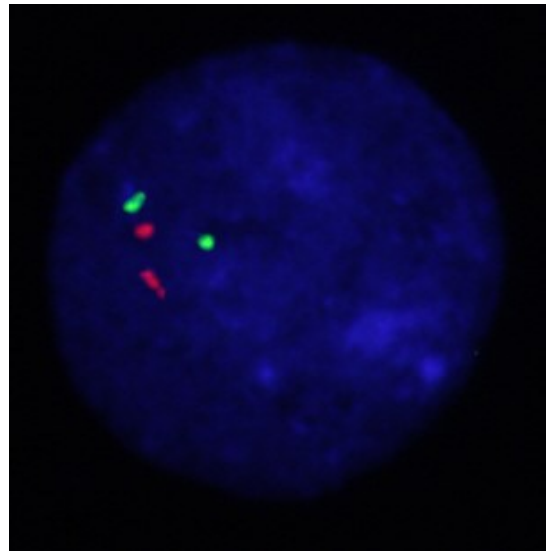
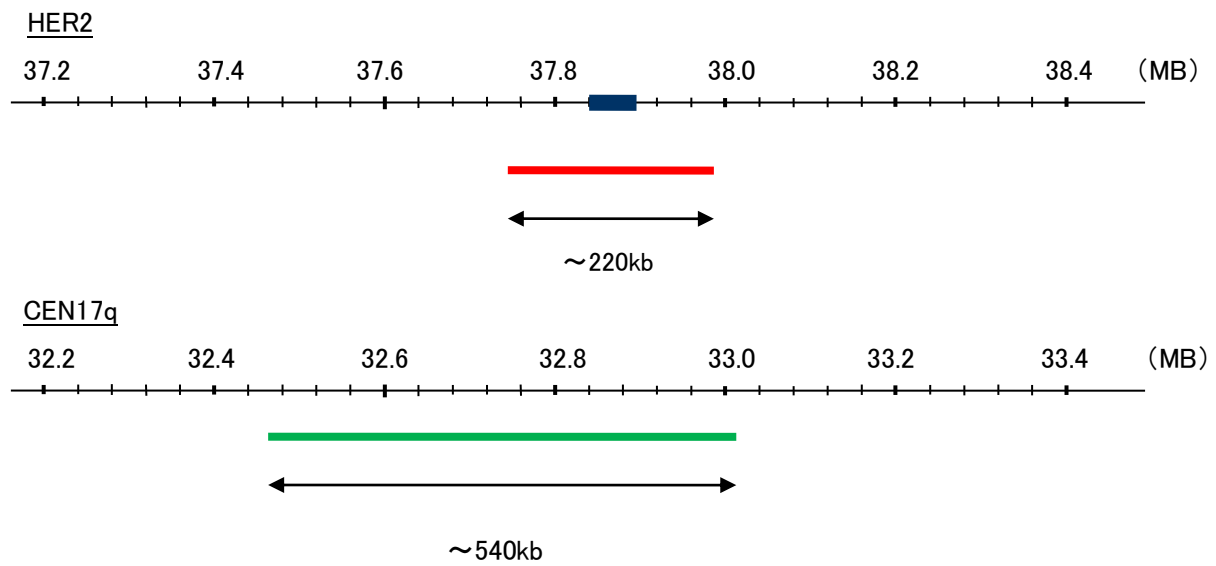
Probe HER2/CEN17q Dual Color FISH Probe  
Product No. GC006

**HER2**

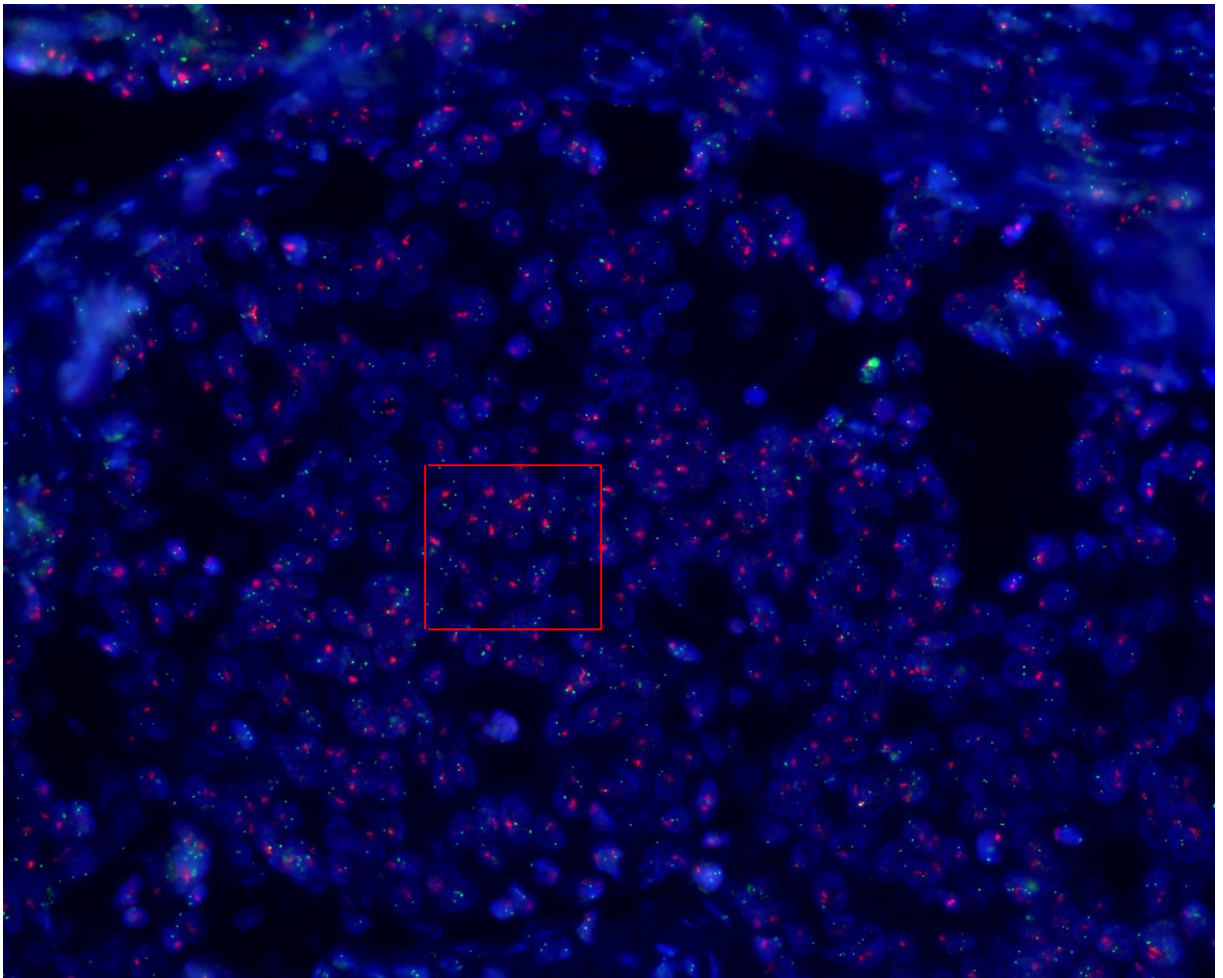
Probe Size Approximately 220kb  
Fluorophore TexRed  
Location 17q12  
Also known as NEU; NGL; HER2; TKR1; CD340; ERBB2; MLN 19; HER-2/neu

**CEN17q**

Probe Size Approximately 540kb  
Fluorophore FITC  
Location 17q11.2



Representative images of normal human cell (lymphocyte) stain with the dual color FISH probe. The left image is chromosomes at metaphase, and the right image is an interphase nucleus.



赤線内拡大

