

Probe ALPL/GEN1p Dual Color FISH Probe
Product No. GC190

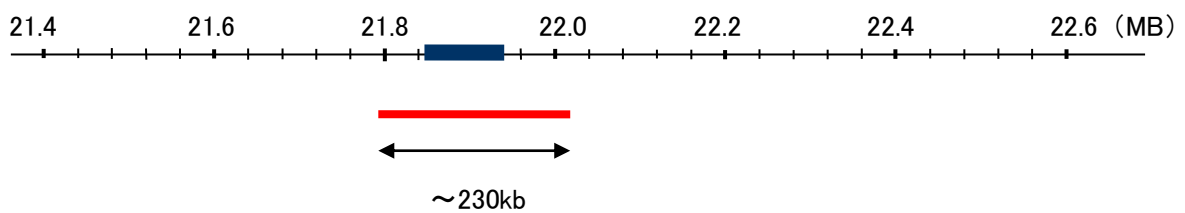
ALPL

Probe Size Approximately 230kb
Fluorophore TexRed
Location 1p36.12
Also known as HOPS; TNAP; APTNAP; TNSALP; AP-TNAP

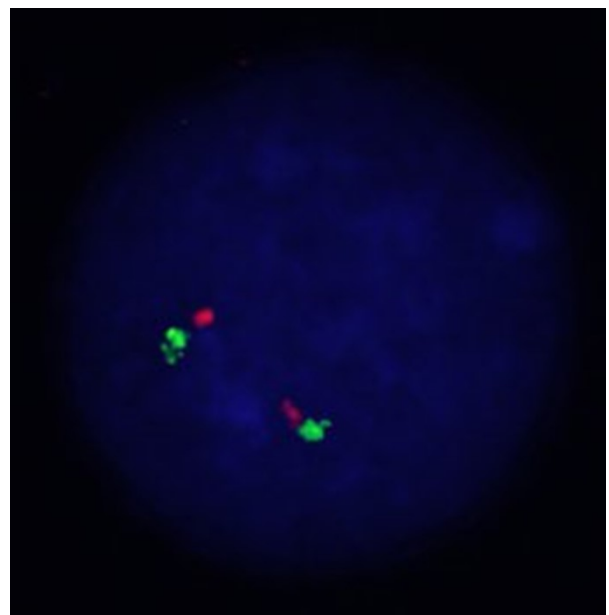
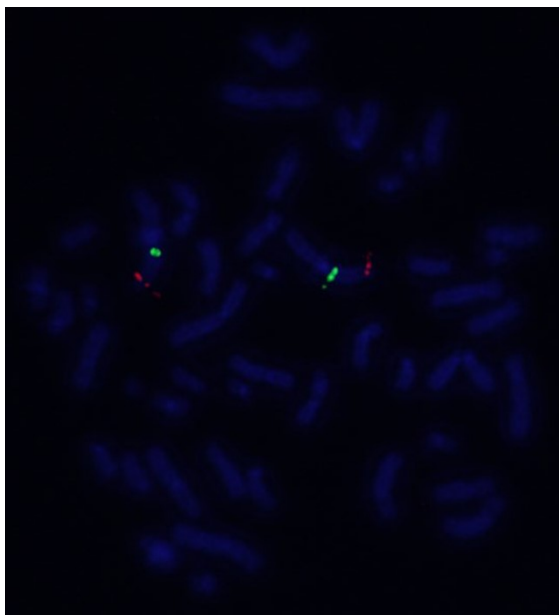
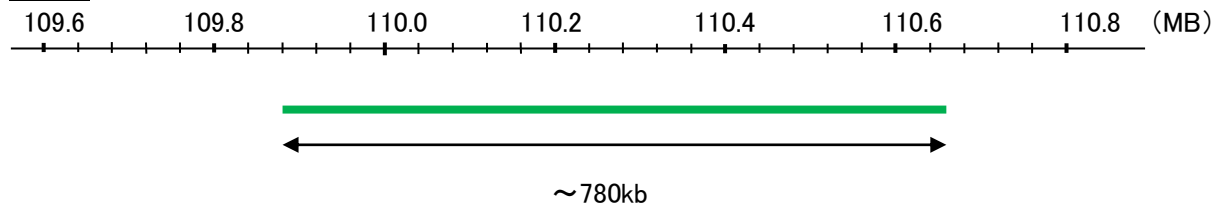
GEN1p

Probe Size Approximately 780kb
Fluorophore FITC
Location 1p13.3

ALPL



GEN1p



Representative images of normal human cell (lymphocyte) stain with the dual color FISH probe. The left image is chromosomes at metaphase, and the right image is an interphase nucleus.