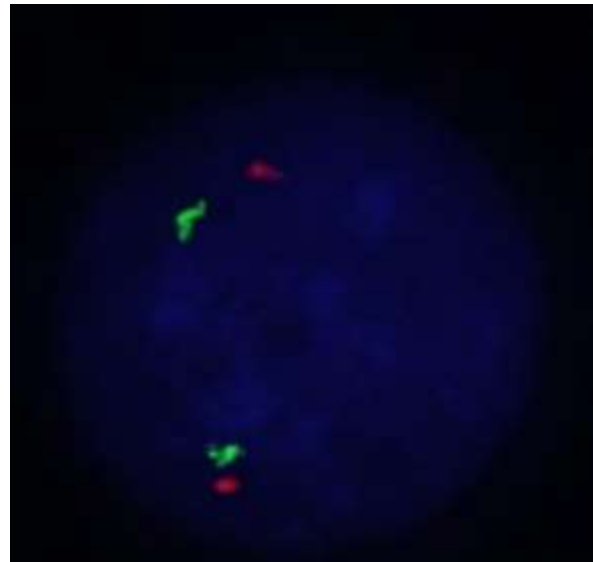
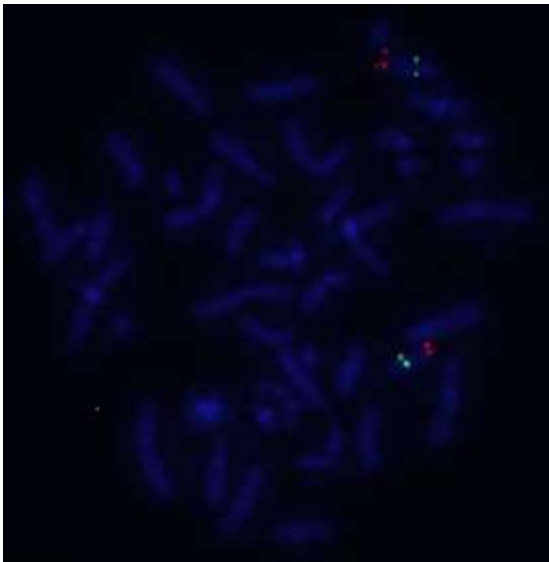
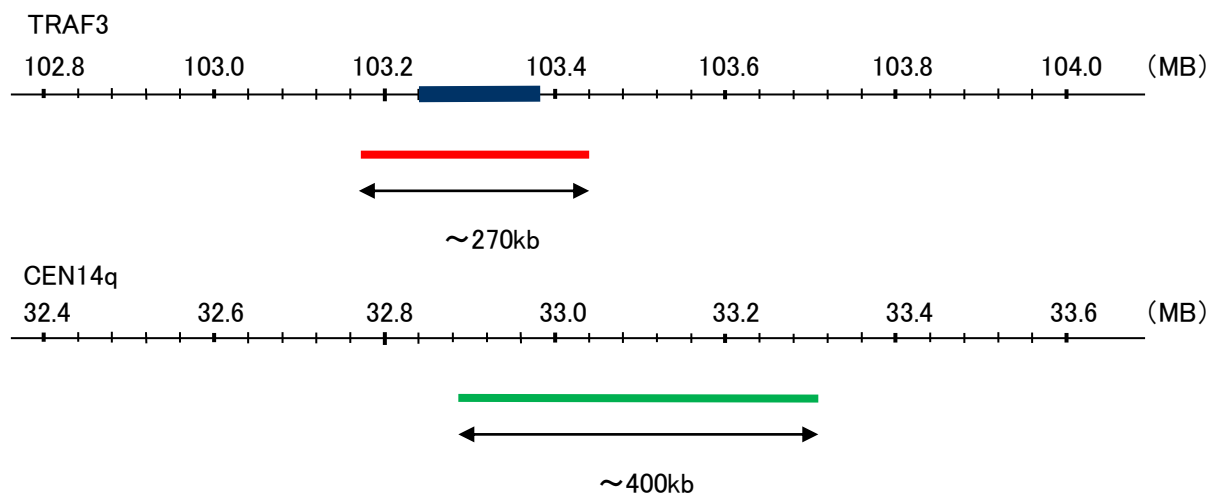


Probe TRAF3/CEN14q Dual Color FISH Probe
Product No. GC191

TRAF3
Probe Size Approximately 270kb
Fluorophore TexRed
Location 14q32.32
Also known as CAP1; LAP1; CAP-1; CRAF1; IIAE5; CD40bp

CEN14q
Probe Size Approximately 400kb
Fluorophore FITC
Location 14q12



Representative images of normal human cell (lymphocyte) stain with the dual color FISH probe. The left image is chromosomes at metaphase, and the right image is an interphase nucleus.