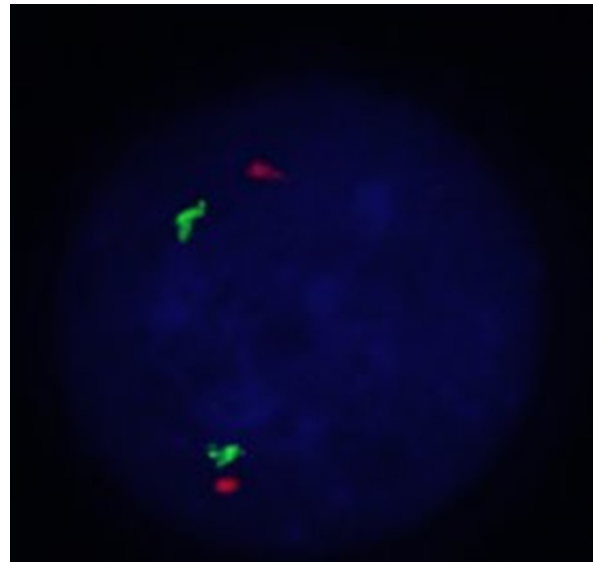
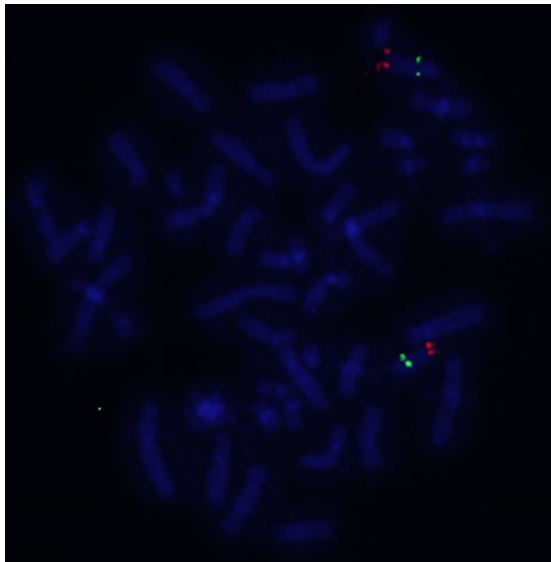
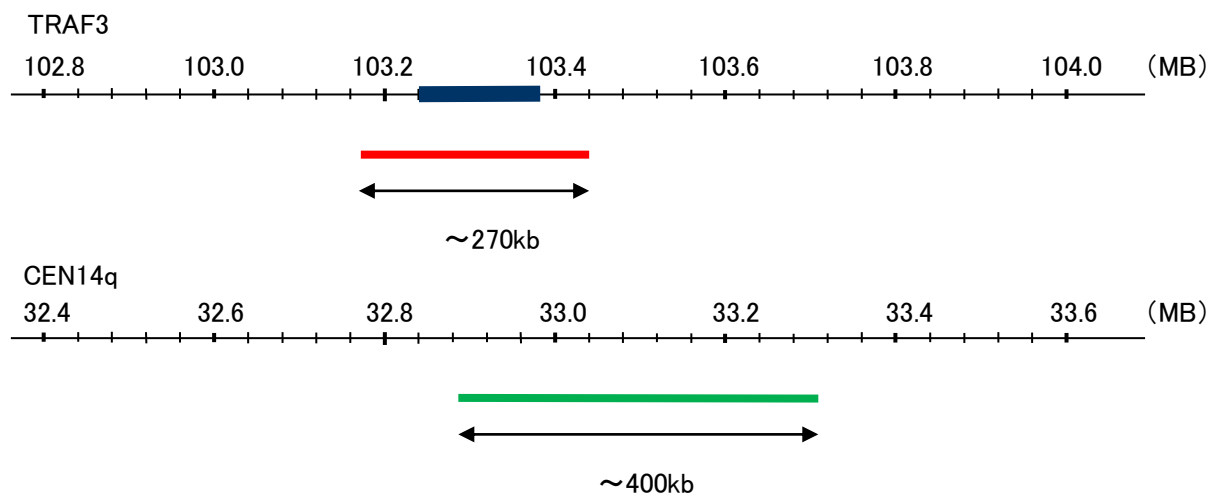


Probe TRAF3/CEN14q Dual Color FISH Probe  
Product No. GC191

TRAF3  
Probe Size Approximately 270kb  
Fluorophore TexRed  
Location 14q32.32  
Also known as CAP1; LAP1; CAP-1; CRAF1; IIAE5; CD40bp

CEN14q  
Probe Size Approximately 400kb  
Fluorophore FITC  
Location 14q11.2



Representative images of normal human cell (lymphocyte) stain with the dual color FISH probe. The left image is chromosomes at metaphase, and the right image is an interphase nucleus.