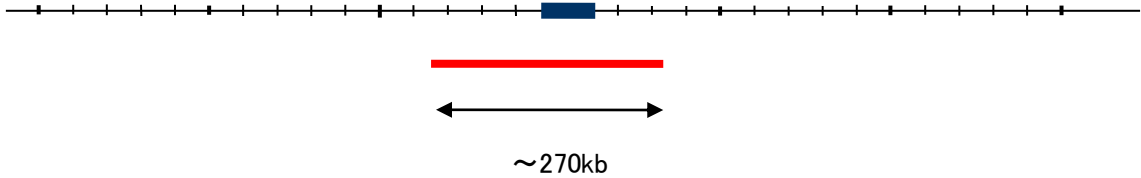


Probe RHOA/CEN3q Dual Color FISH Probe
Product No. GC193

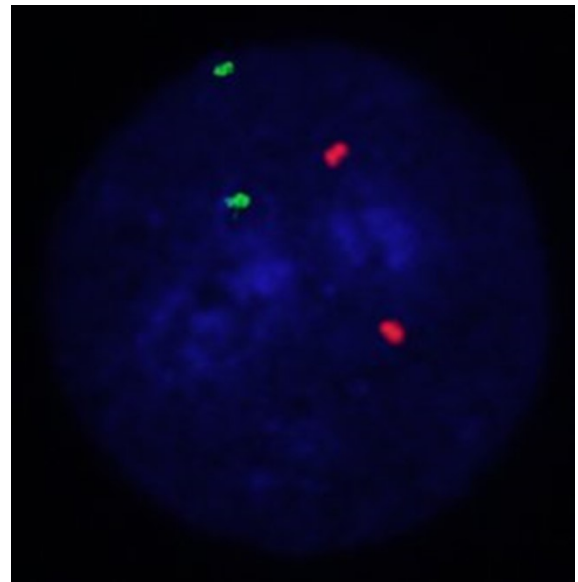
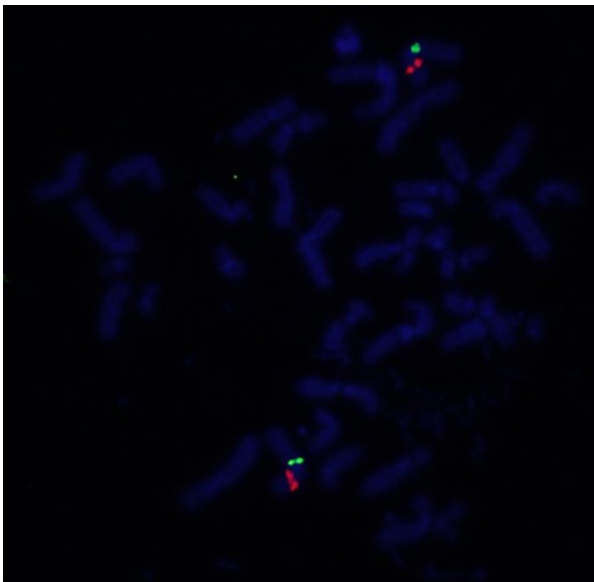
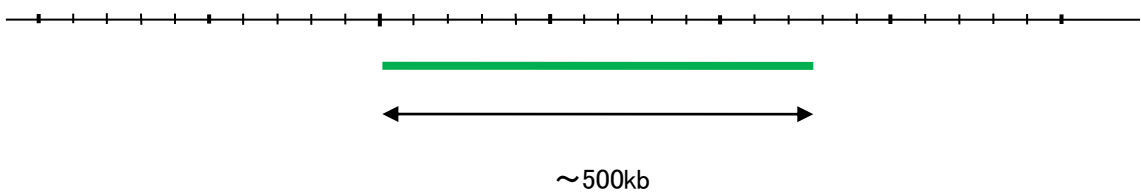
RHOA
Probe Size Approximately 270kb
Fluorophore TexRed
Location 3p21.3
Also known as ARHA; ARH12; RHO12; RHOH12

CEN3q
Probe Size Approximately 500kb
Fluorophore FITC
Location 3q12.1

RHOA
48.8 49.0 49.2 49.4 49.6 49.8 50.0 (MB)



CEN3q
95.0 95.2 95.4 95.6 95.8 96.0 96.2 (MB)



Representative images of normal human cell (lymphocyte) stain with the dual color FISH probe. The left image is chromosomes at metaphase, and the right image is an interphase nucleus.