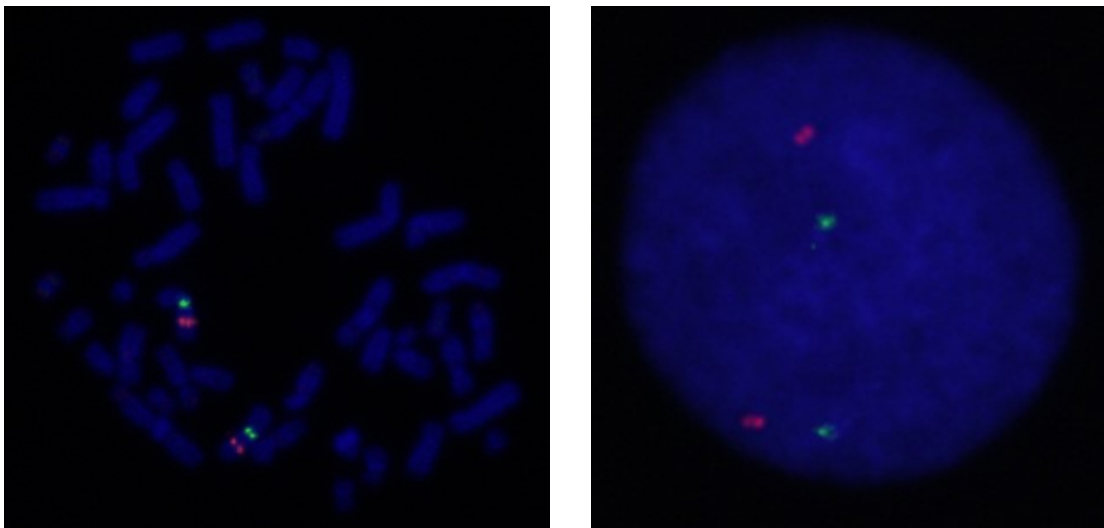
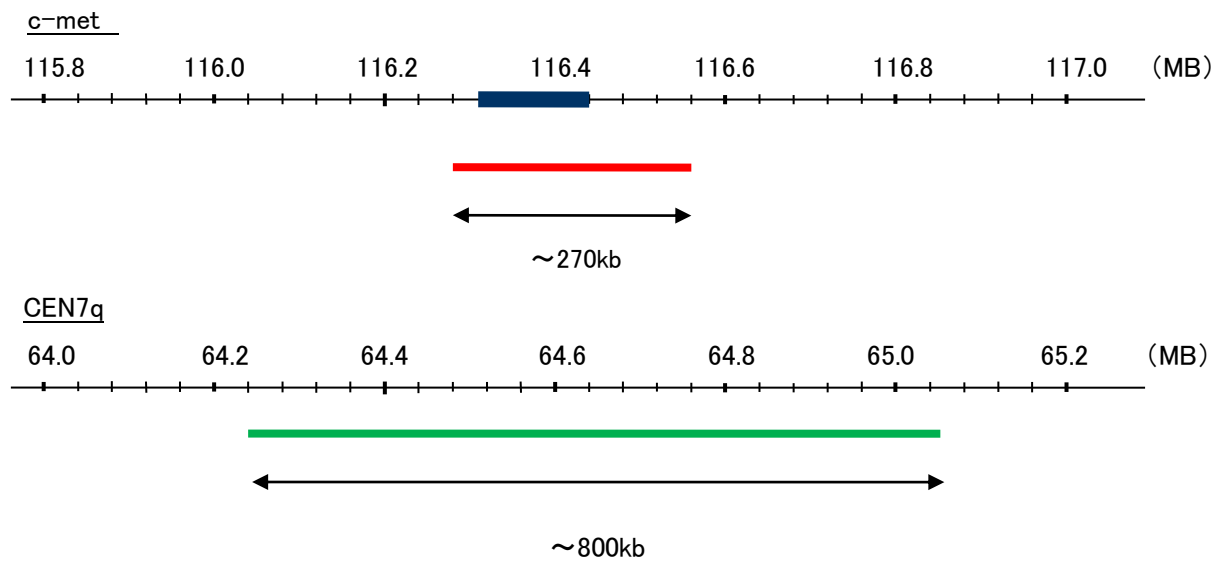


Probe c-met/CEN7q Dual Color FISH Probe  
Product No. GC004

c-met  
Probe Size Approximately 270kb  
Fluorophore TexRed  
Location 7q31  
Also known as HGFR; AUTS9; RCCP2; MET; DFNB97

CEN7q  
Probe Size Approximately 800kb  
Fluorophore FITC  
Location 7q11.21



Representative images of normal human cell (lymphocyte) stain with the dual color FISH probe. The left image is chromosomes at metaphase, and the right image is an interphase nucleus.