

Probe HNF1B/CEN17q Dual Color FISH Probe  
Product No. GC204

**HNF1B**

Probe Size Approximately 330kb

Fluorophore TexRed

Location 17q12

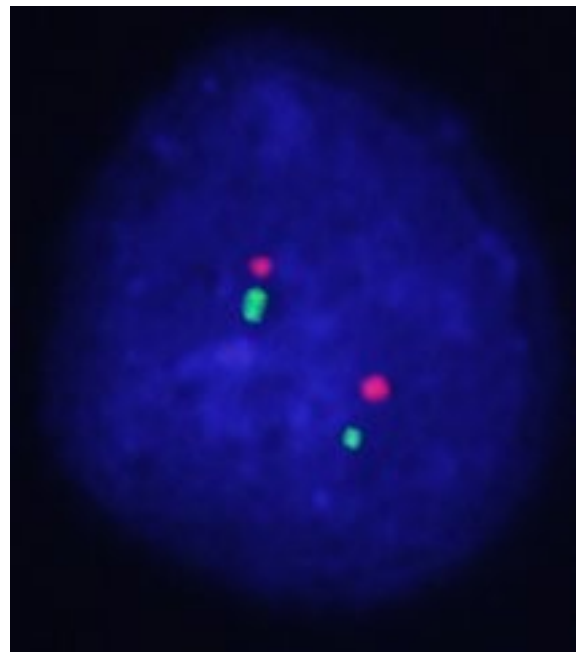
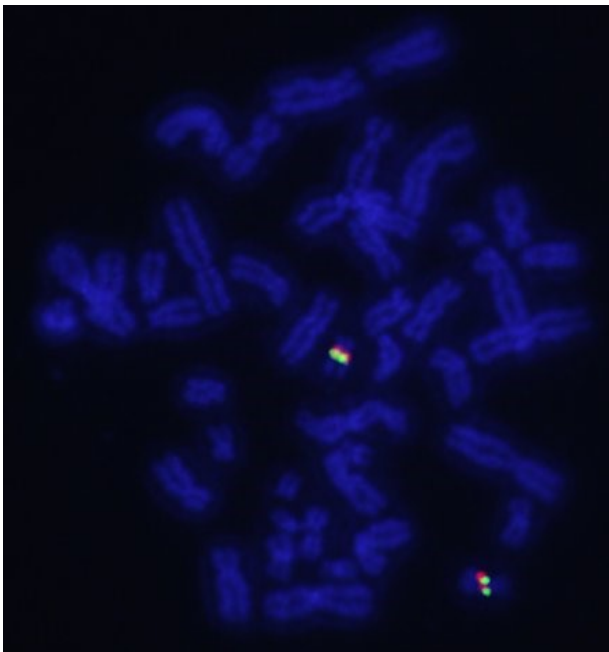
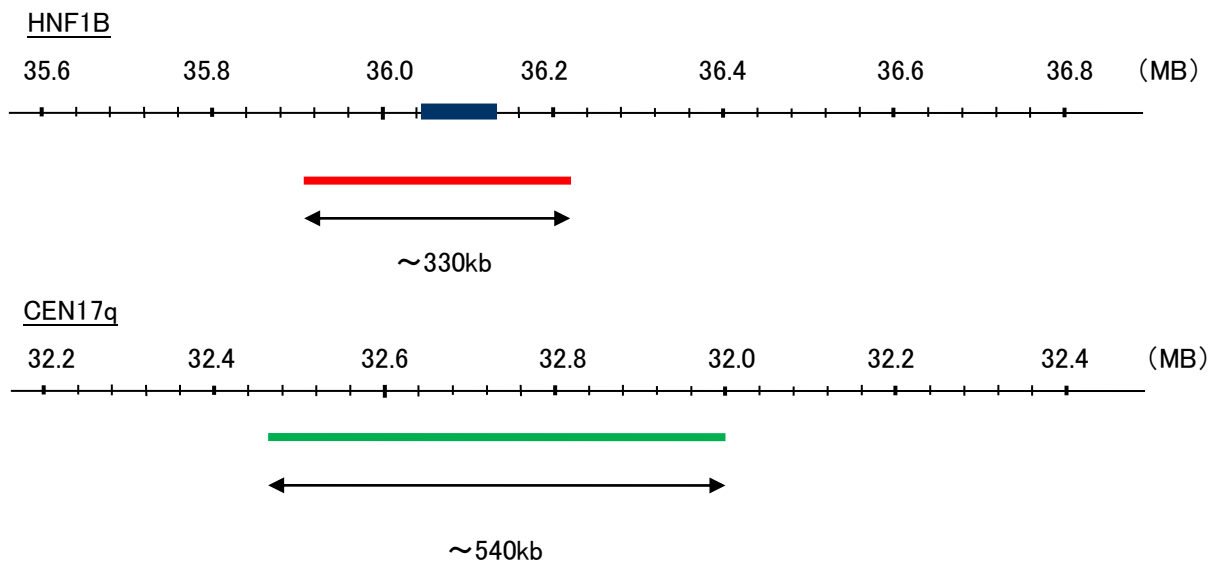
Also known as FJHN; HNF2; LFB3; TCF2; HPC11; LF-B3; MODY5; TCF-2; VHNF1; HNF-1B; HNF1beta; HNF-1-beta

**CEN17q**

Probe Size Approximately 540kb

Fluorophore FITC

Location 17q11.2



Representative images of normal human cell (lymphocyte) stain with the dual color FISH probe. The left image is chromosomes at metaphase, and the right image is an interphase nucleus.