

Probe FANCA/CEN16q Dual Color FISH Probe
Product No. GC205

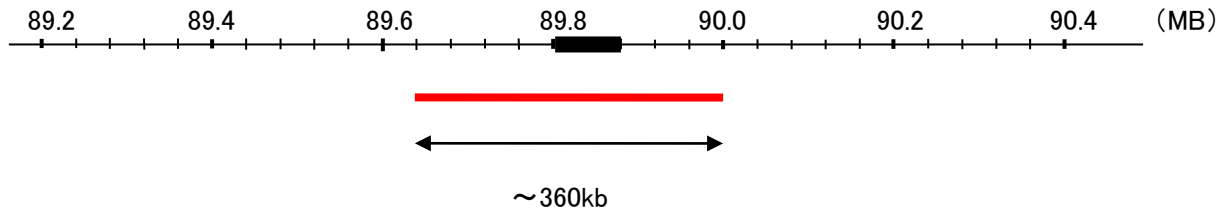
FANCA

Probe Size Approximately 360kb
Fluorophore TexRed
Location 16q24.3
Also known as FA; FA1; FAA; FAH; FA-H; FACA; FANCH

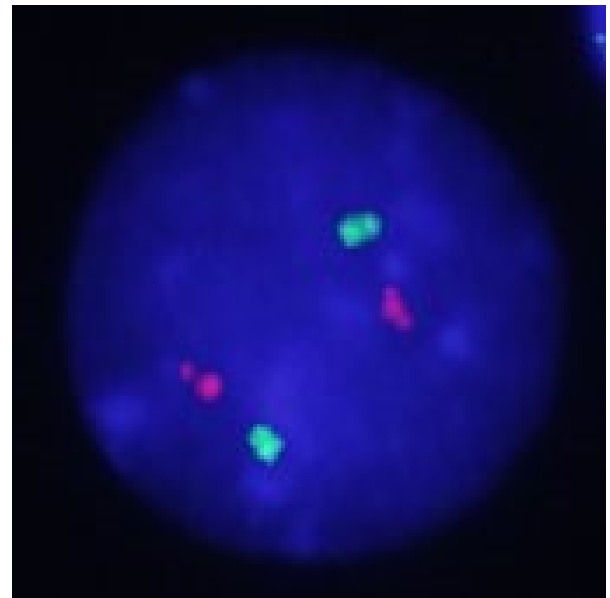
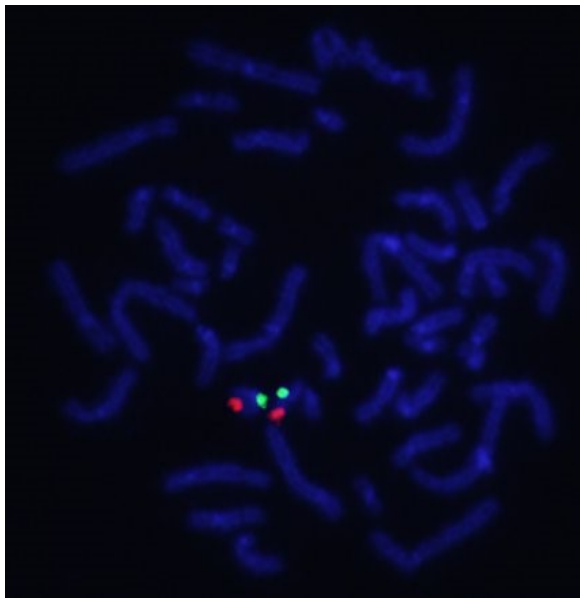
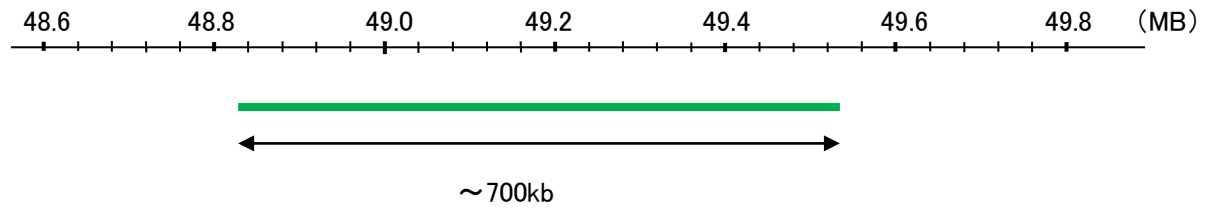
CEN16q

Probe Size Approximately 700kb
Fluorophore FITC
Location 16q12.1

FANCA



CEN16q



Representative images of normal human cell (lymphocyte) stain with the dual color FISH probe. The left image is chromosomes at metaphase, and the right image is an interphase nucleus.