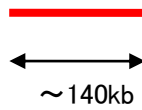


Probe CDKN1B/CEN12p Dual Color FISH Probe
Product No. GC209

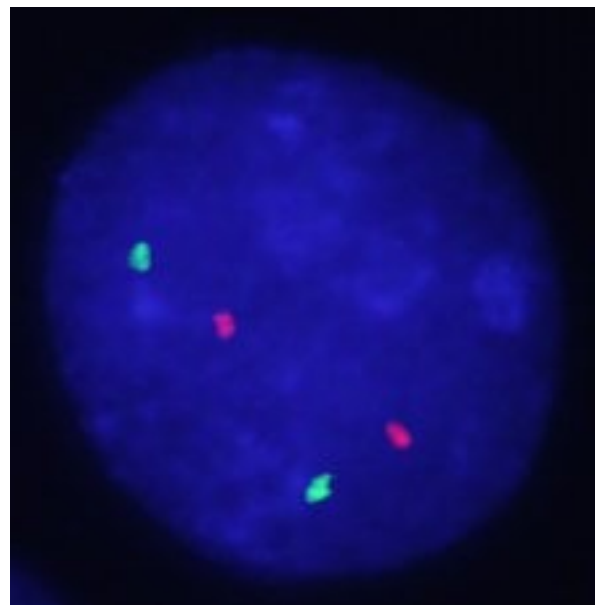
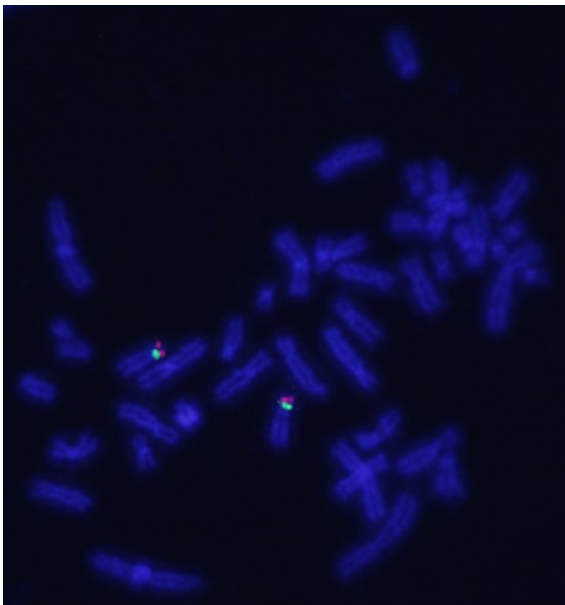
CDKN1B
Probe Size Approximately 140kb
Fluorophore TexRed
Location 12p13.1
Also known as KIP1; MEN4; CDKN4; MEN1B; P27KIP1

CEN12p
Probe Size Approximately 530kb
Fluorophore FITC
Location 12p11.22

CDKN1B
12.2 12.4 12.6 12.8 13.0 13.2 13.4 (MB)



CEN12p
29.4 29.6 29.8 30.0 30.2 30.4 30.6 (MB)



Representative images of breast cancer stain with the dual color FISH probe. The left image is chromosomes at metaphase, and the right image is an interphase nucleus.