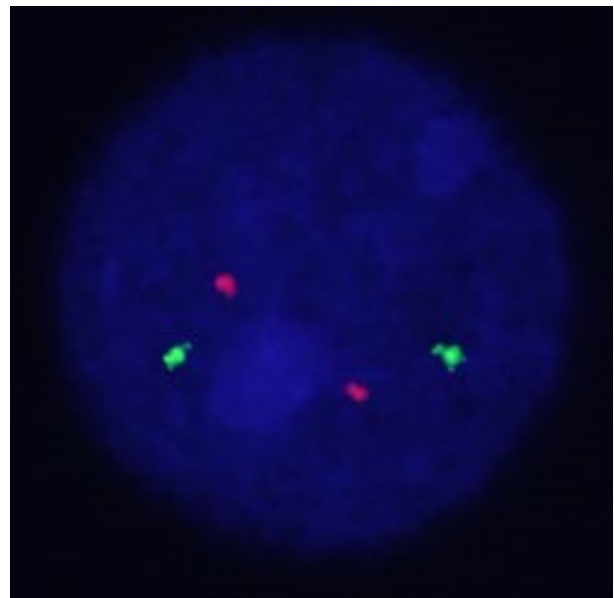
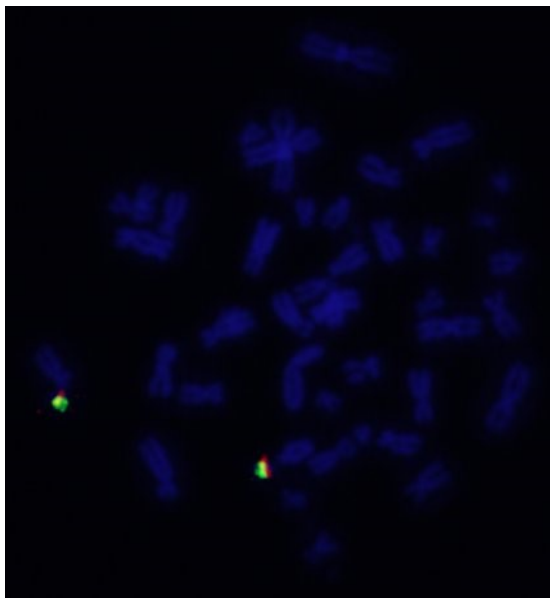
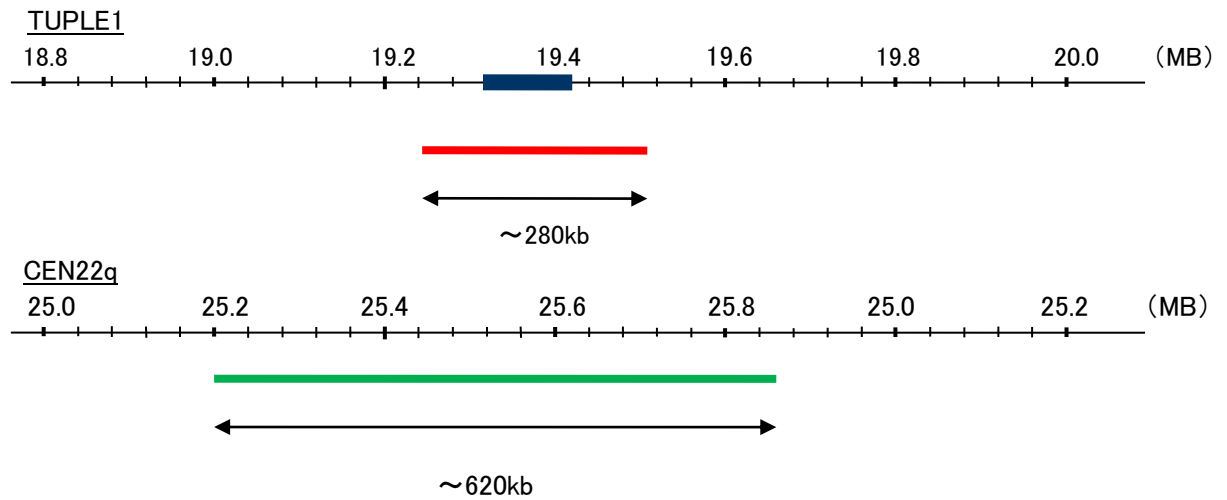


Probe TUPLE1/CEN22q FISH Probe
Product No. GC211

TUPLE1
Probe Size Approximately 280kb
Fluorophore TexRed
Location 22q11.21
Also known as TUP1; DGCR1; HIRA

CEN22q
Probe Size Approximately 620kb
Fluorophore FITC
Location 22q11.22



Representative images of breast cancer stain with the dual color FISH probe. The left image is chromosomes at metaphase, and the right image is an interphase nucleus.