

Probe NRAS/CEN1q Dual Color FISH Probe
Product No. GC217

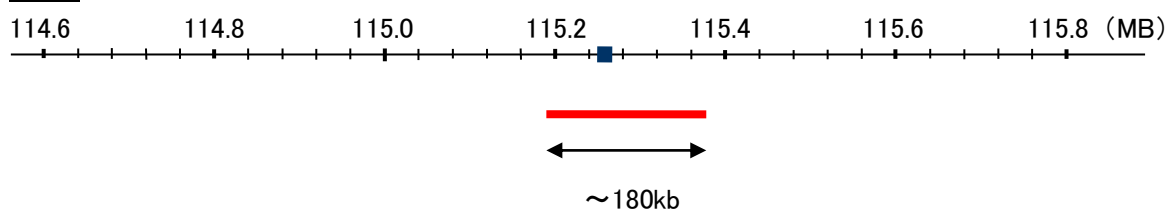
NRAS

Probe Size Approximately 180kb
Fluorophore TexRed
Location 1p13.2
Also known as NS6; CMNS; NCMS; ALPS4; N-ras; NRAS1

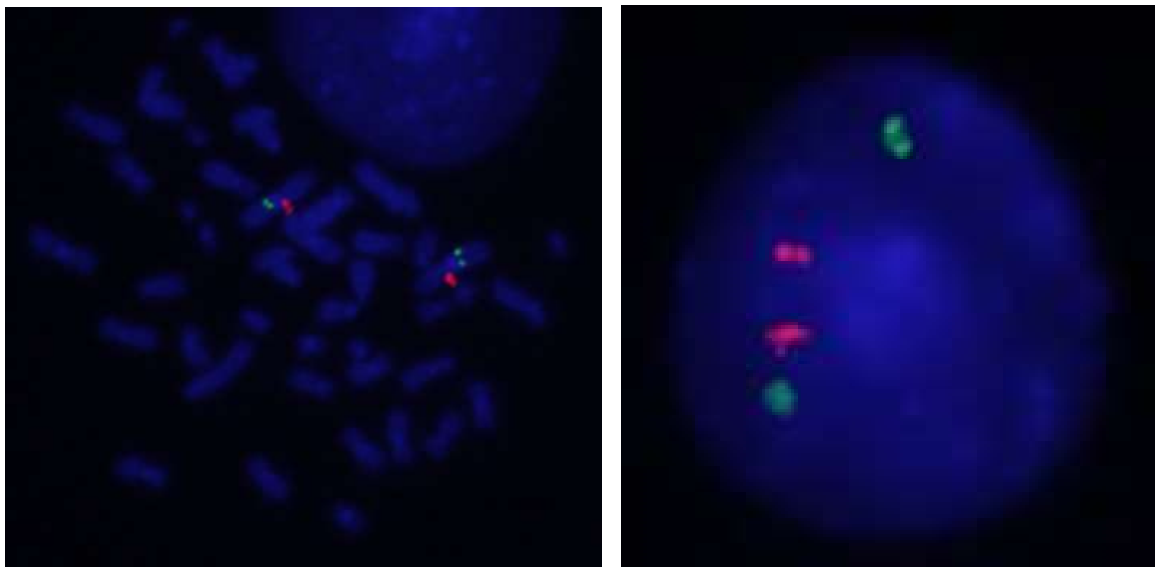
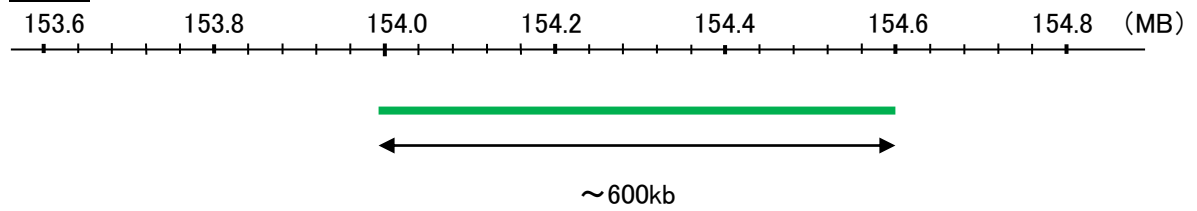
CEN1q

Probe Size Approximately 600kb
Fluorophore FITC
Location 1q21.3

NRAS



CEN1q



representative images of normal human cell (lymphocyte) stain with the dual color FISH probe. The left image is chromosomes at metaphase, and the right image is an interphase nucleus.