

Probe RAF1/CEN3q Dual Color FISH Probe
Product No. GC218

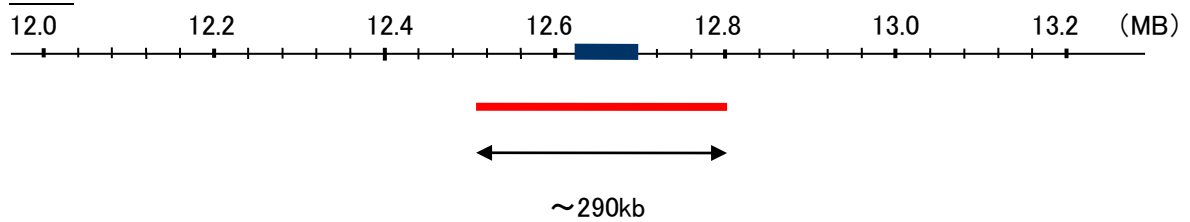
RAF1

Probe Size Approximately 290kb
Fluorophore TexRed
Location 3p25
Also known as NS5; CRAF; Raf-1; c-Raf; CMD1NN

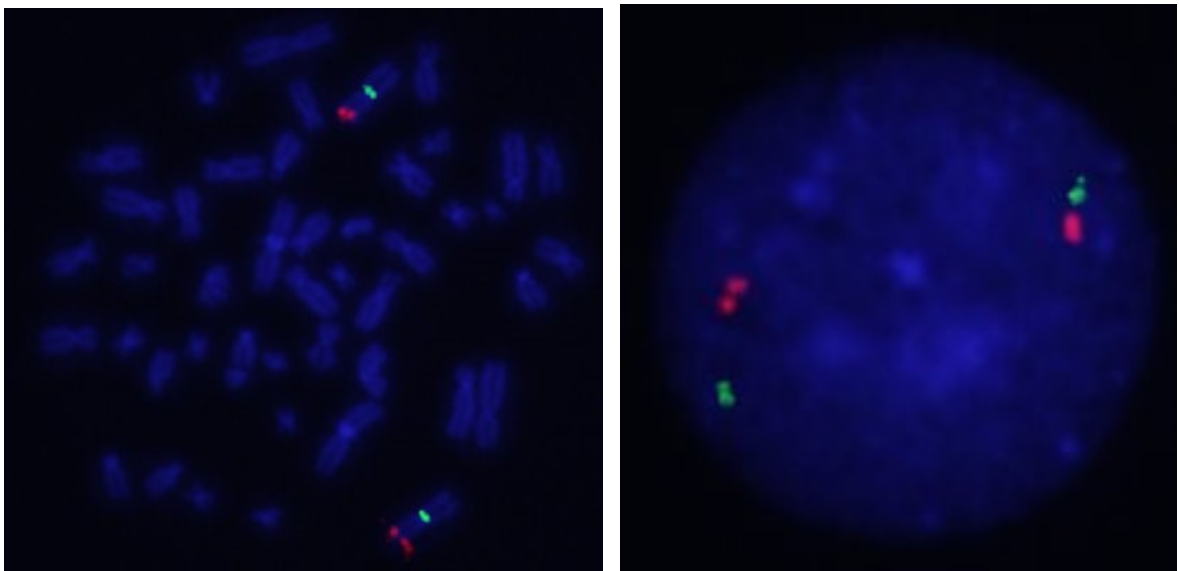
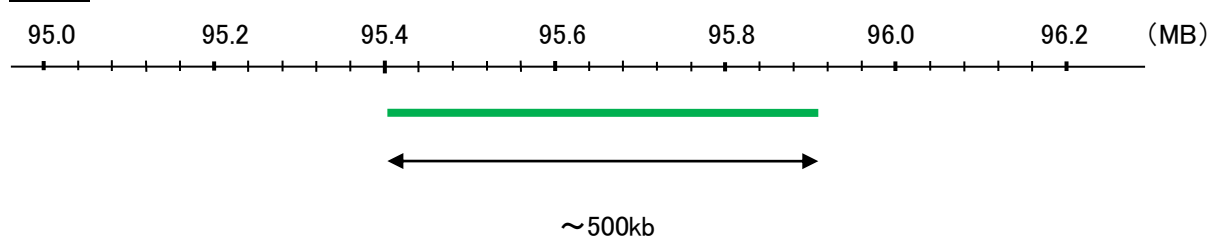
CEN3q

Probe Size Approximately 500kb
Fluorophore FITC
Location 3q12.1

RAF1



CEN3q



representative images of normal human cell (lymphocyte) stain with the dual color FISH probe. The left image is chromosomes at metaphase, and the right image is an interphase nucleus.