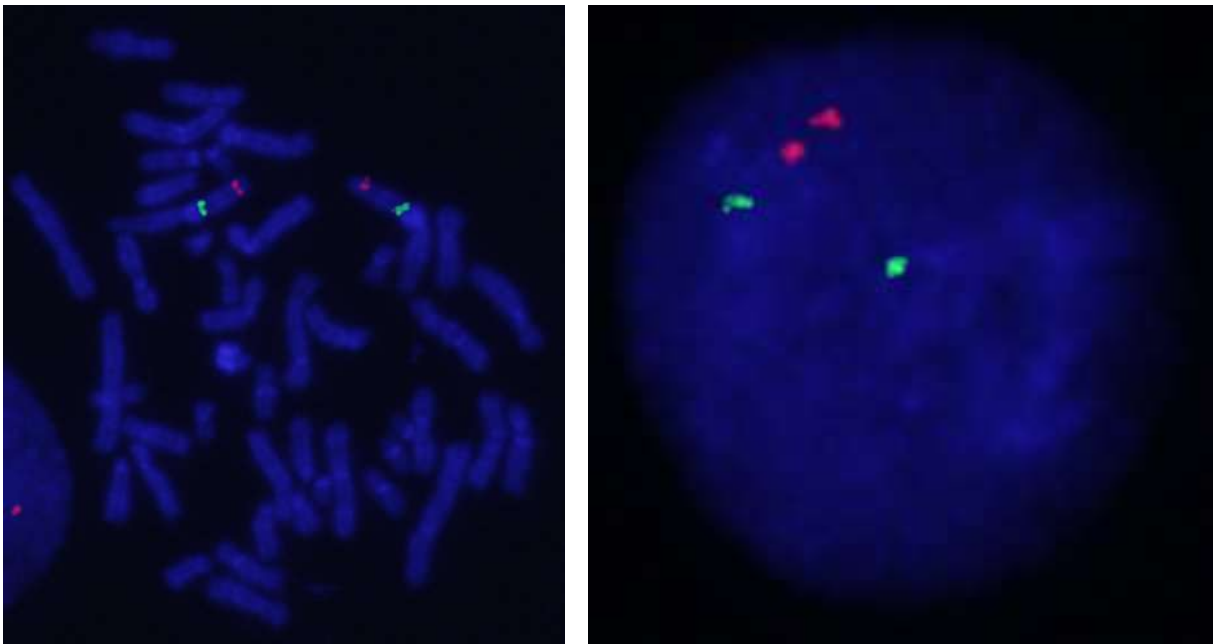
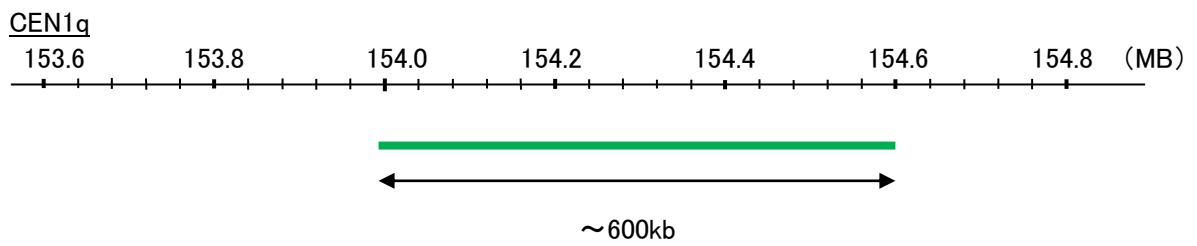
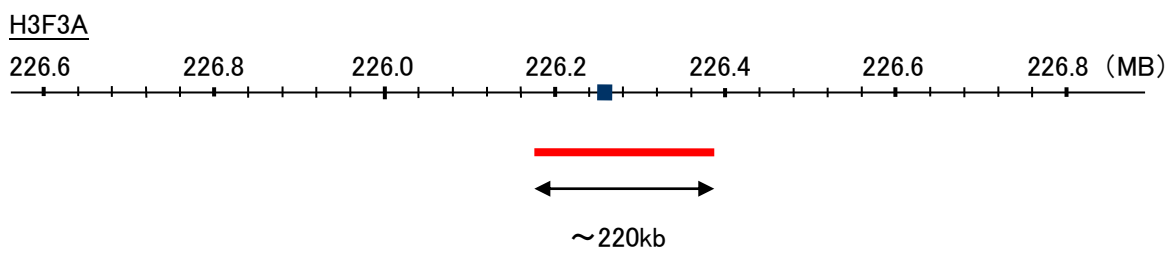


Probe H3F3A/CEN1q Dual Color FISH Probe
Product No. GC219

H3F3A
Probe Size Approximately 220kb
Fluorophore TexRed
Location 1q42.12
Also known as H3F3; H3.3A

CEN1q
Probe Size Approximately 600kb
Fluorophore FITC
Location 1q21.3



representative images of normal human cell (lymphocyte) stain with the dual color FISH probe. The left image is chromosomes at metaphase, and the right image is an interphase nucleus.