

Probe CTNND2/CEN5q Dual Color FISH Probe
Product No. GC221

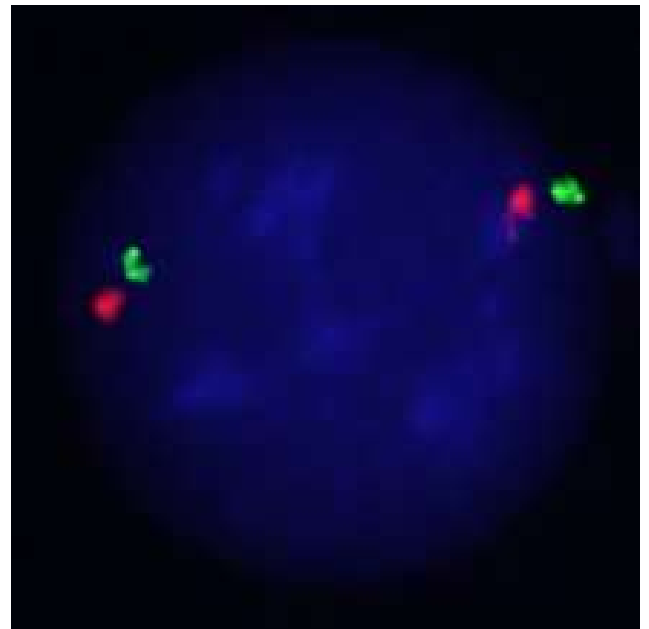
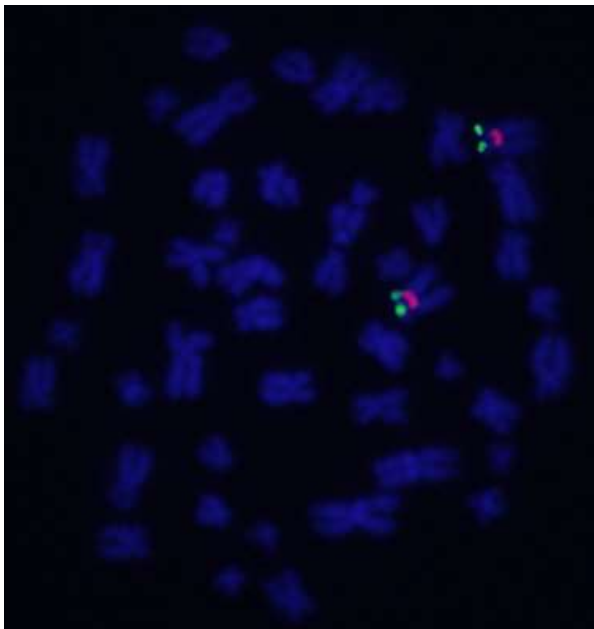
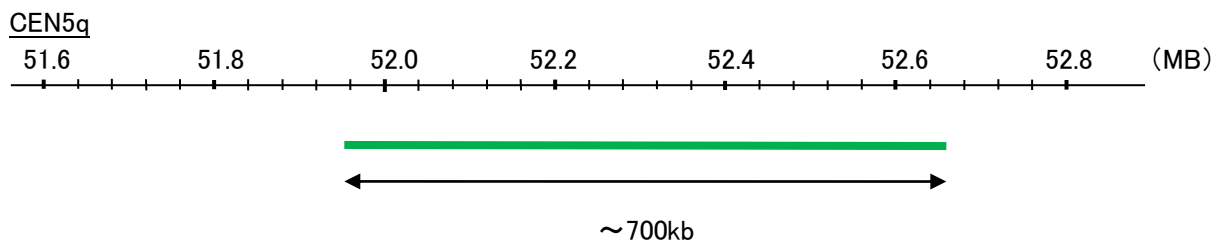
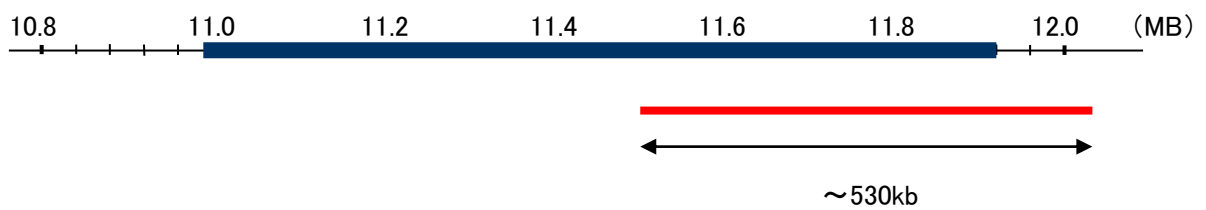
CTNND2

Probe Size Approximately 530kb
Fluorophore TexRed
Location 5p15.2
Also known as GT24; NPRAP

CEN5q

Probe Size Approximately 700kb
Fluorophore FITC
Location 5q11.2

CTNND2



representative images of normal human cell (lymphocyte) stain with the dual color FISH probe. The left image is chromosomes at metaphase, and the right image is an interphase nucleus.