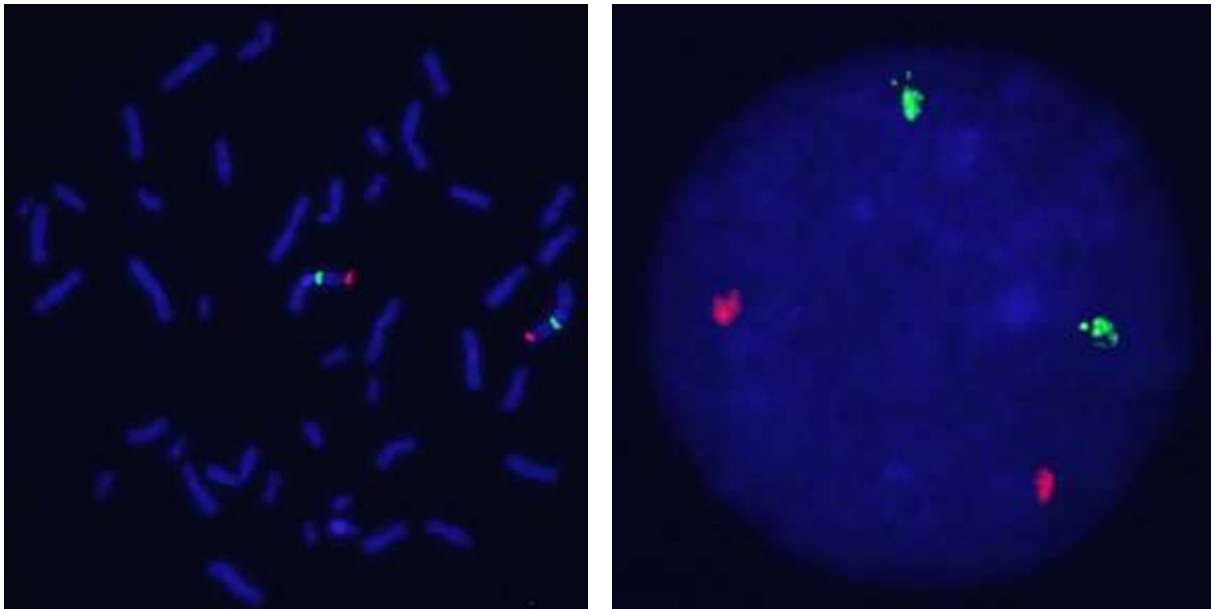
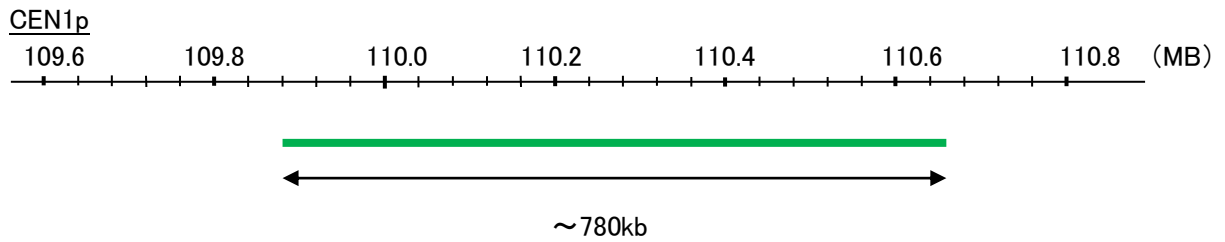
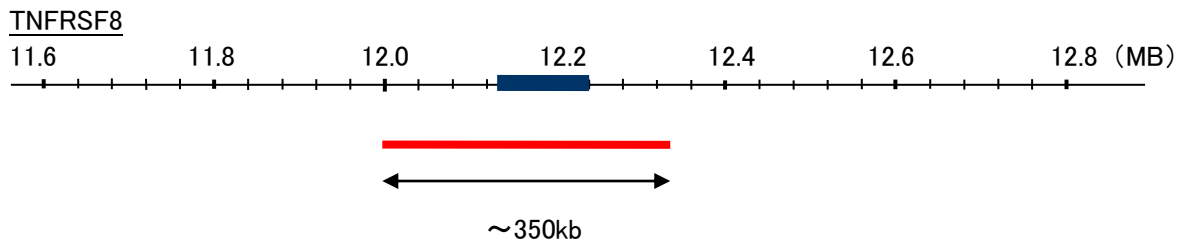


Probe TNFRSF8/CEN1p Dual Color FISH Probe
Product No. GC223

TNFRSF8
Probe Size Approximately 350kb
Fluorophore TexRed
Location 1p36.22
Also known as CD30; Ki-1; D1S166E

CEN1p
Probe Size Approximately 780kb
Fluorophore FITC
Location 1p13.3



representative images of normal human cell (lymphocyte) stain with the dual color FISH probe. The left image is chromosomes at metaphase, and the right image is an interphase nucleus.