

Probe                   BATF3/CEN1q Dual Color FISH Probe  
Product No.           GC224

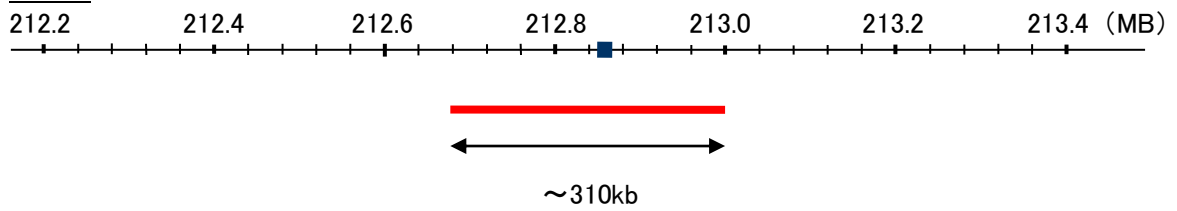
**BATF3**

Probe Size            Approximately 310kb  
Fluorophore           TexRed  
Location               1q32.3  
Also known as         JDP1; SNFT; JUNDM1

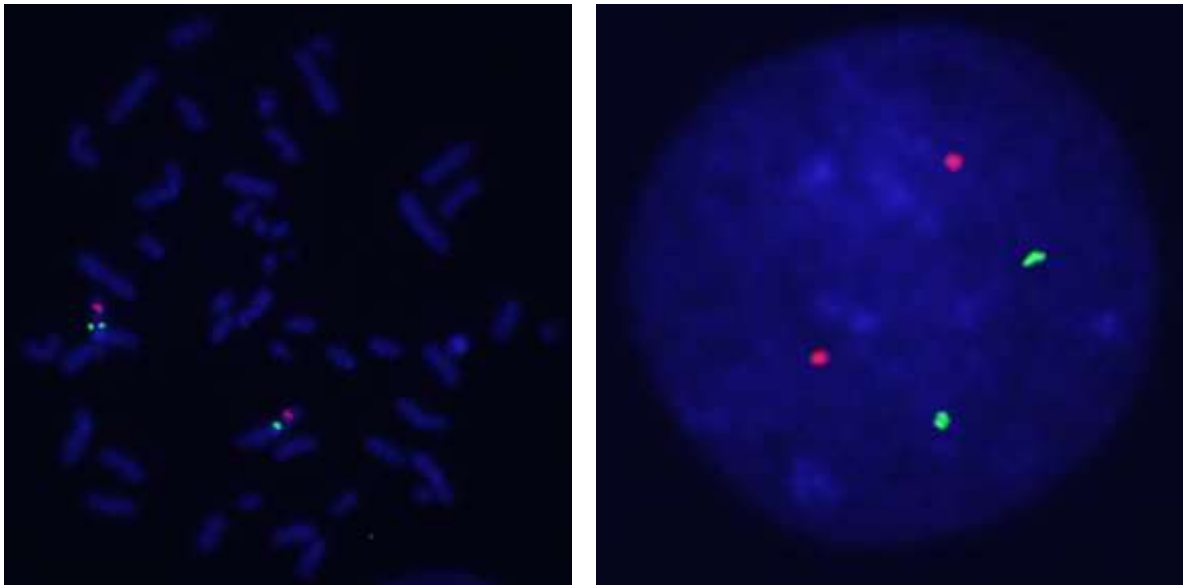
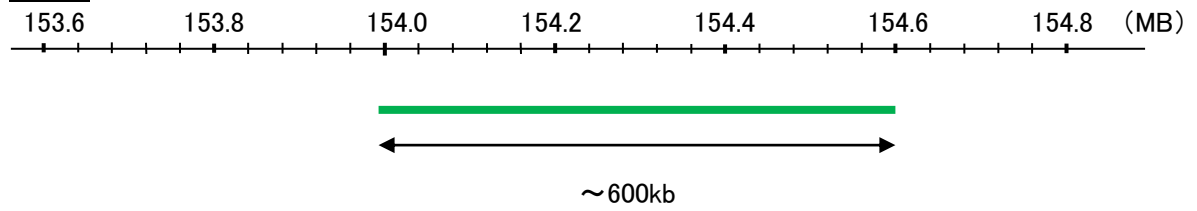
**CEN1q**

Probe Size            Approximately 600kb  
Fluorophore           FITC  
Location               1q21.3

**BATF3**



**CEN1q**



representative images of normal human cell (lymphocyte) stain with the dual color FISH probe. The left image is chromosomes at metaphase, and the right image is an interphase nucleus.