

Probe TMOD/CEN9q Dual FISH Probe
Product No. GC225

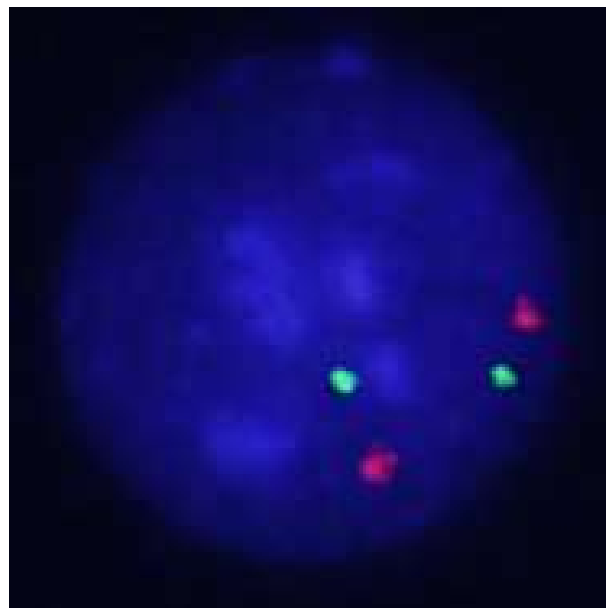
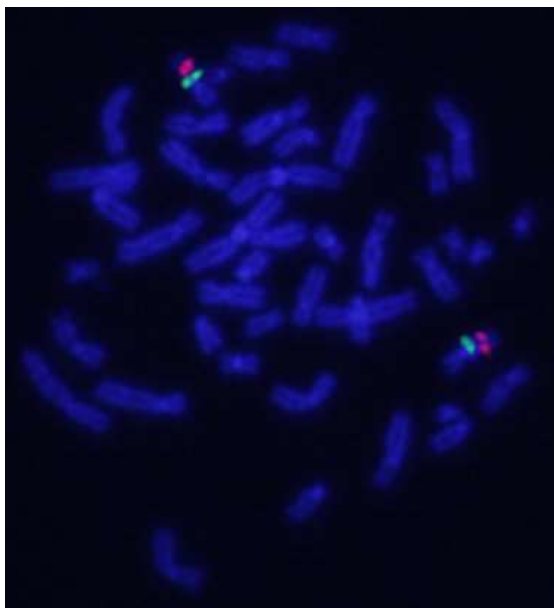
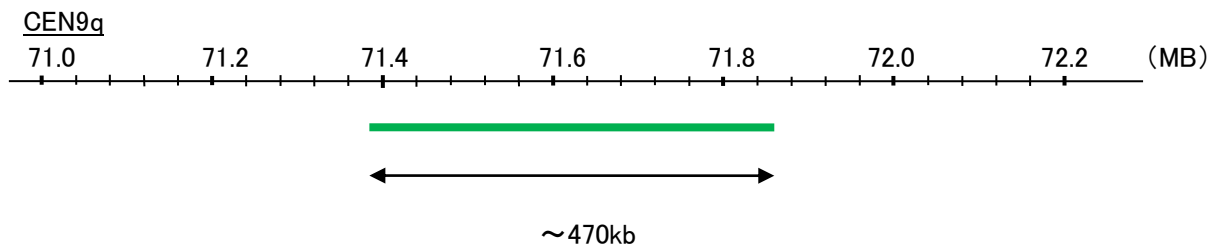
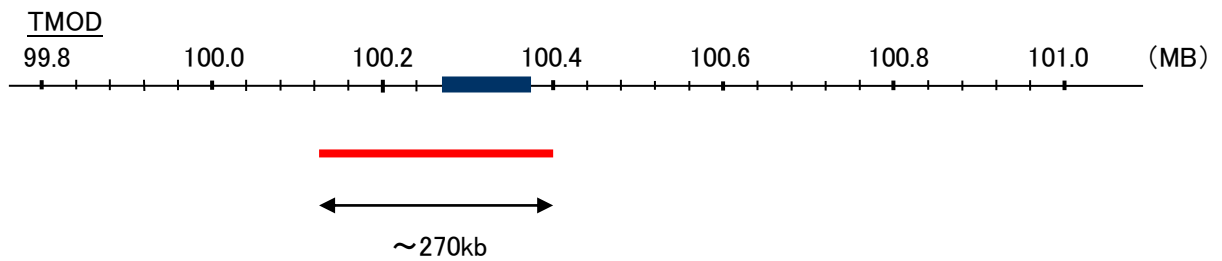
TMOD

Probe Size Approximately 270kb
Fluorophore TexRed
Location 9q22.33
Also known as TMOD1; ETMOD; D9S57E

CEN9q

Probe Size Approximately 470kb
Fluorophore FITC
Location 9q21

Storage 4°C
Origin Human
Source Genomic DNA



representative images of normal human cell (lymphocyte) stain with the dual color FISH probe. The left image is chromosomes at metaphase, and the right image is an interphase nucleus.