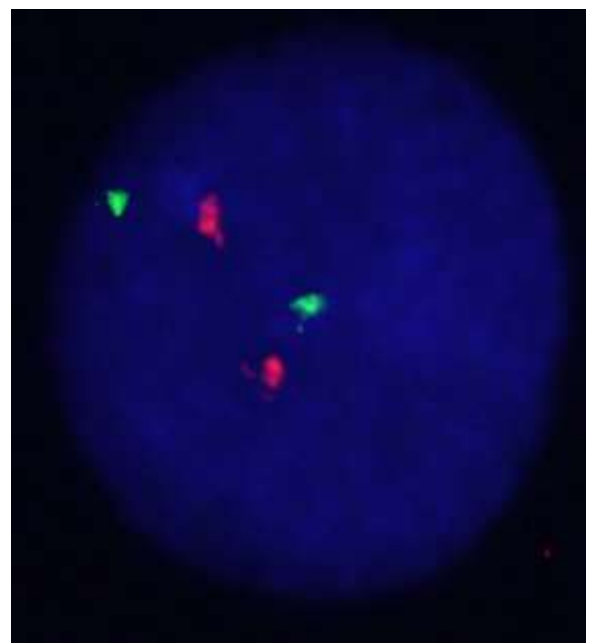
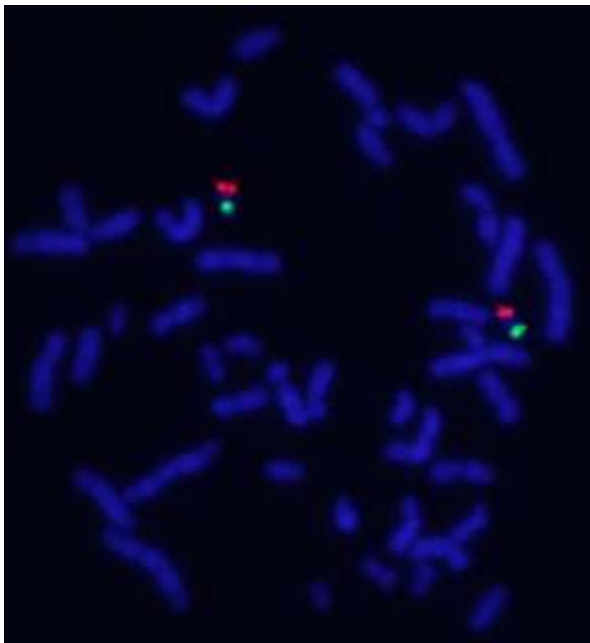
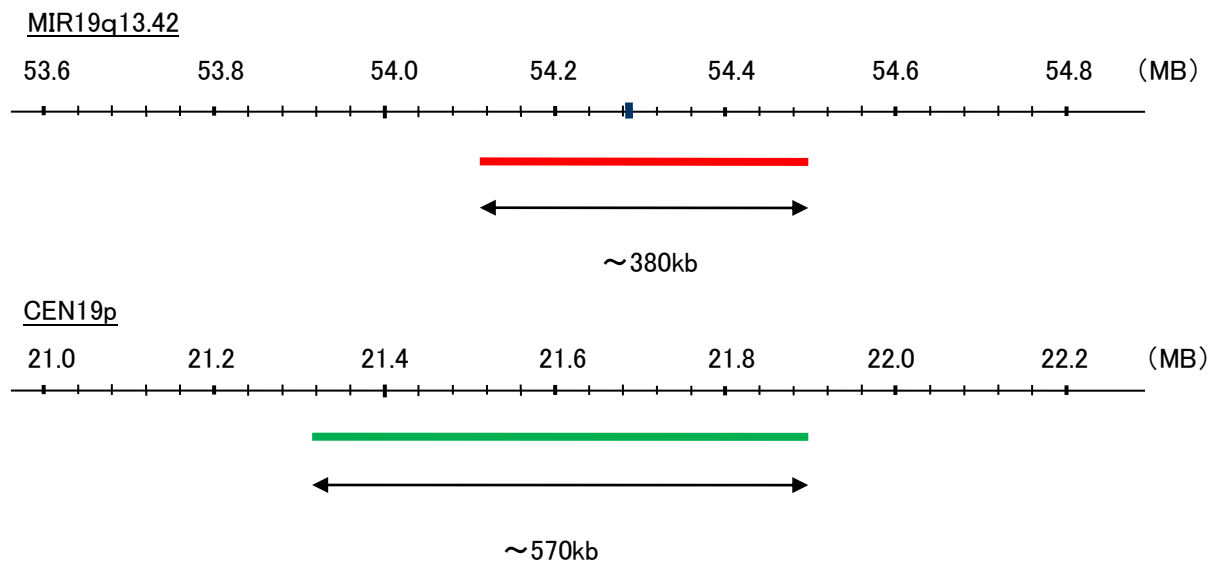


Probe MIR19q13.42/CEN19p Dual Color FISH Probe
Product No. GC226

MIR19q13.42
Probe Size Approximately 380kb
Fluorophore TexRed
Location 19p13.42

CEN19p
Probe Size Apporoximately 570kb
Fluorophore FITC
Location 19p13.11



representative images of normal human cell (lymphocyte) stain with the dual color FISH probe. The left image is chromosomes at metaphase, and the right image is an interphase nucleus.