

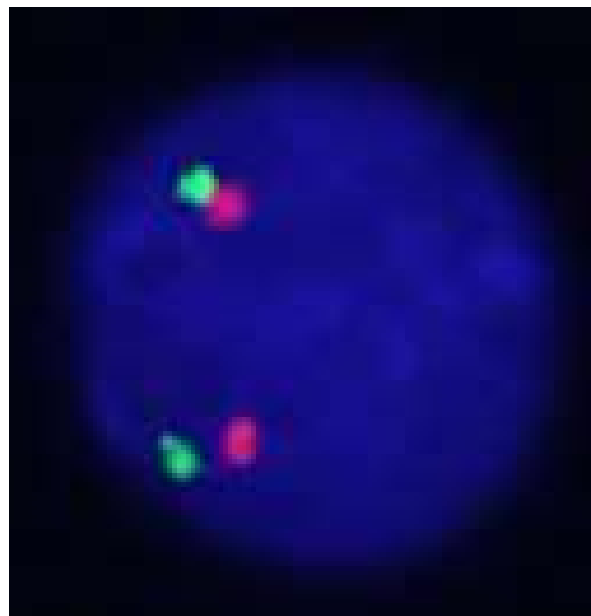
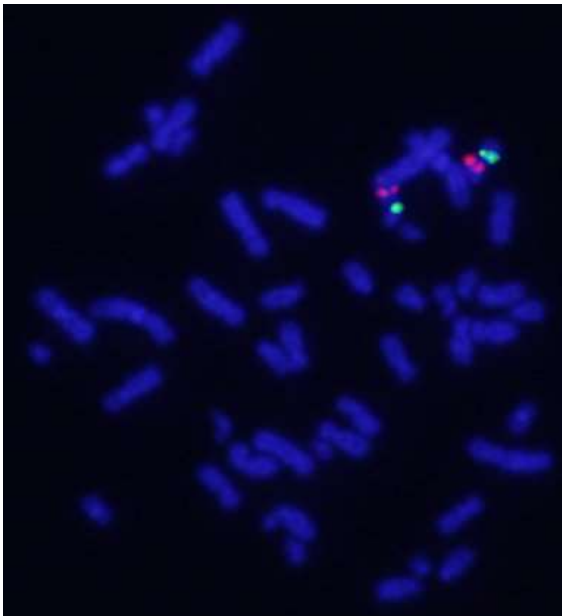
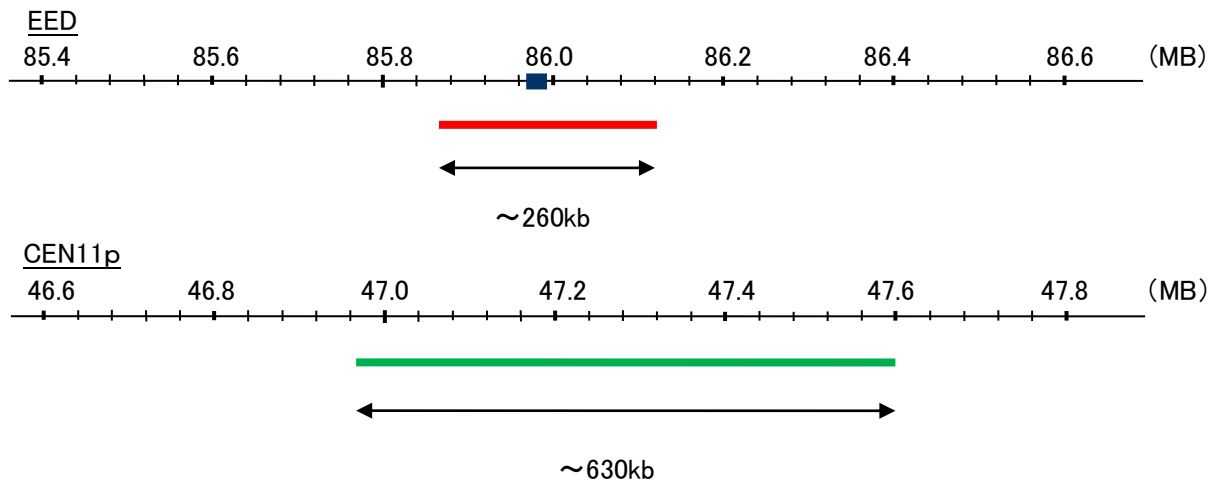
Probe EED/CEN11p Dual Color FISH Probe
Product No. GC227

EED

Probe Size Approximately 260kb
Fluorophore TexRed
Location 11q14.2
Also known as HEED; COGIS; WAIT1

CEN11p

Probe Size Approximately 630kb
Fluorophore FITC
Location 11p11.12



representative images of normal human cell (lymphocyte) stain with the dual color FISH probe. The left image is chromosomes at metaphase, and the right image is an interphase nucleus.