

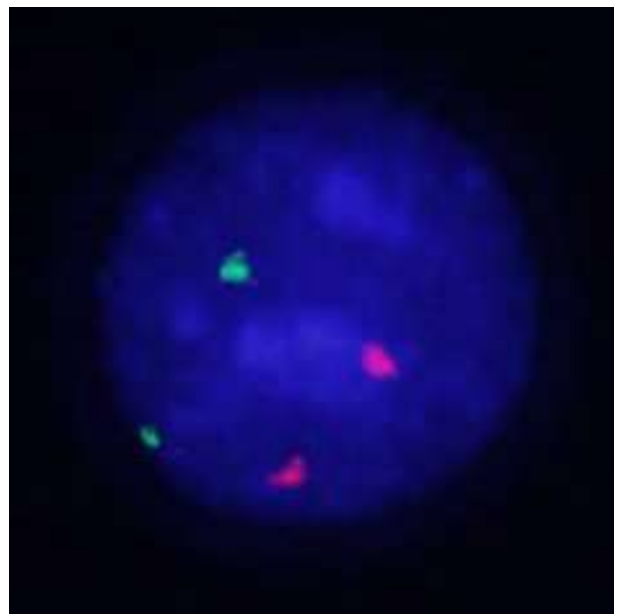
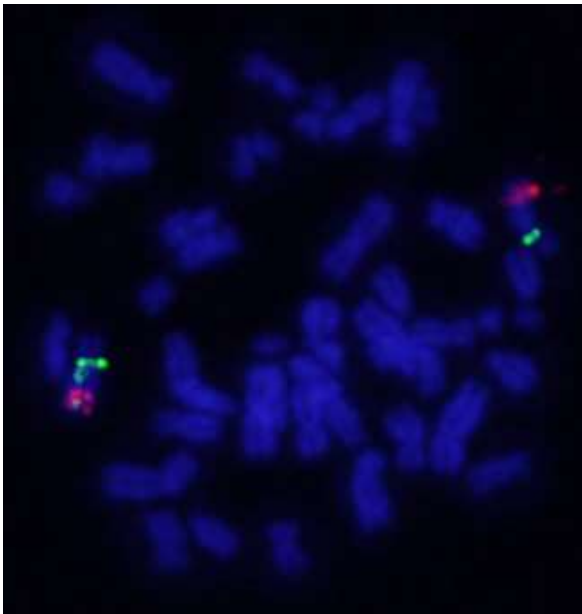
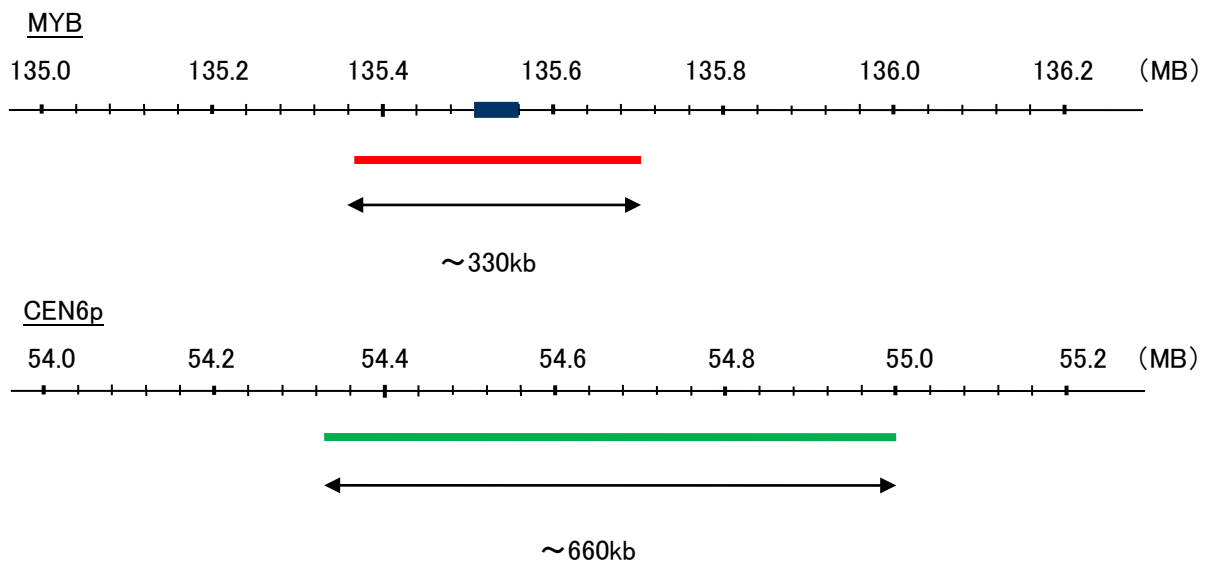
Probe MYB/CEN6p Dual Color FISH Probe  
Product No. GC229

MYB

Probe Size Approximately 330kb  
Fluorophore TexRed  
Location 6q23.3  
Also known as efg; Cmyb; c-myb; c-myb\_CDS

CEN6p

Probe Size Approximately 660kb  
Fluorophore FITC  
Location 6p12.1



representative images of normal human cell (lymphocyte) stain with the dual color FISH probe. The left image is chromosomes at metaphase, and the right image is an interphase nucleus.