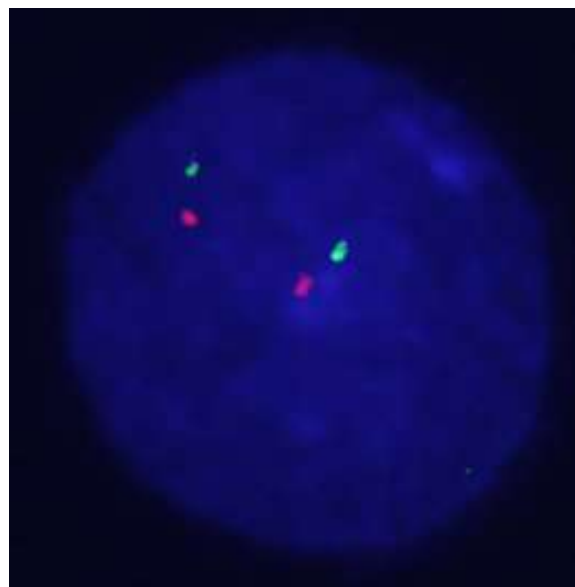
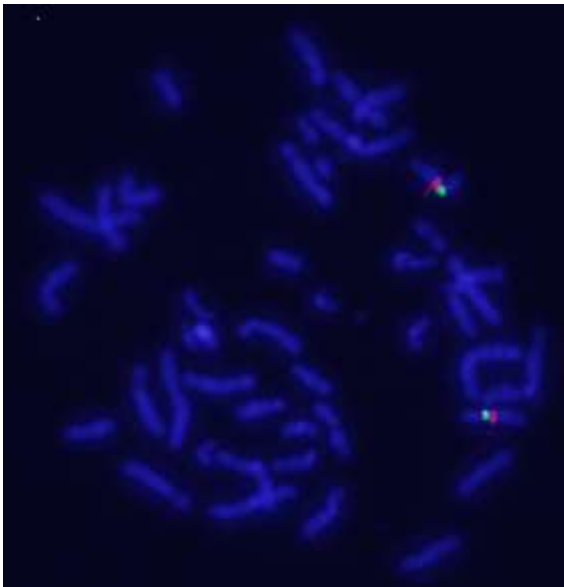
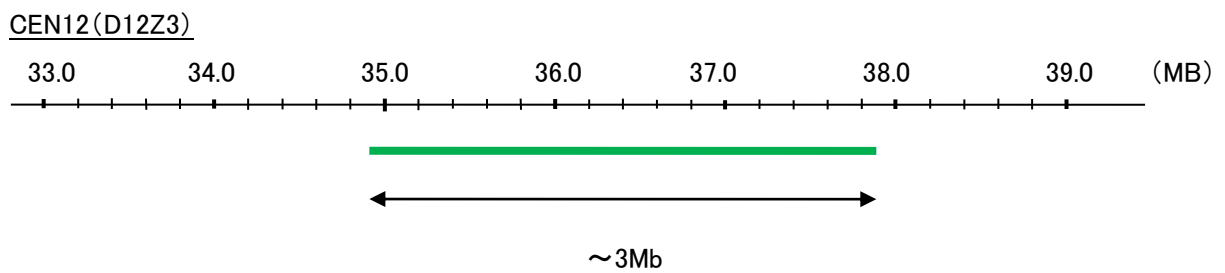
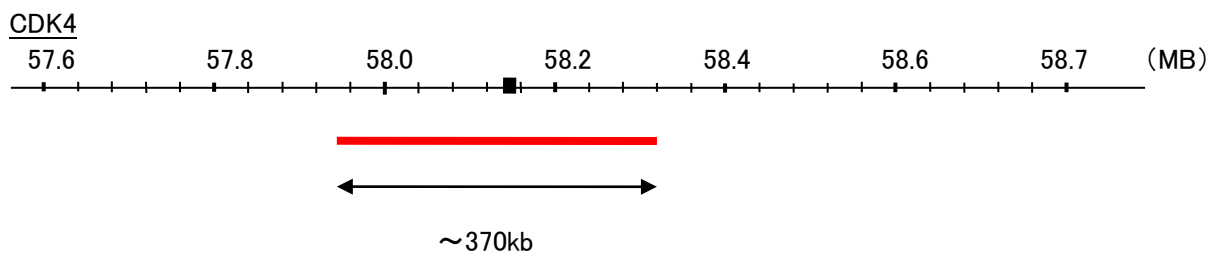


Probe CDK4/CEN12 Dual Color FISH Probe
Product No. GC232

CDK4
Probe Size Approximately 370kb
Fluorophore TexRed
Location 12q14.1
Also known as CMM3; PSK-J3

CEN12(D12Z3)
Probe Size Approximately 3Mb
Fluorophore FITC
Location 12p11.1-q11



representative images of normal human cell (lymphocyte) stain with the dual color FISH probe. The left image is chromosomes at metaphase, and the right image is an interphase nucleus.