

Probe VEGFR3/CEN5q Dual Color FISH Probe  
Product No. GC237

**VEGFR3**

Probe Size Approximately 160kb  
Fluorophore TexRed  
Location 5q35.3  
Also known as PCL; CHTD7; FLT-4; FLT41; LMPH1A; LMPHM1; VEGFR-3

**CEN5q**

Probe Size Approximately 700kb  
Fluorophore FITC  
Location 5q11.2

VEGFR3

179.4 179.6 179.8 180.0 180.2 180.4 180.6 (MB)



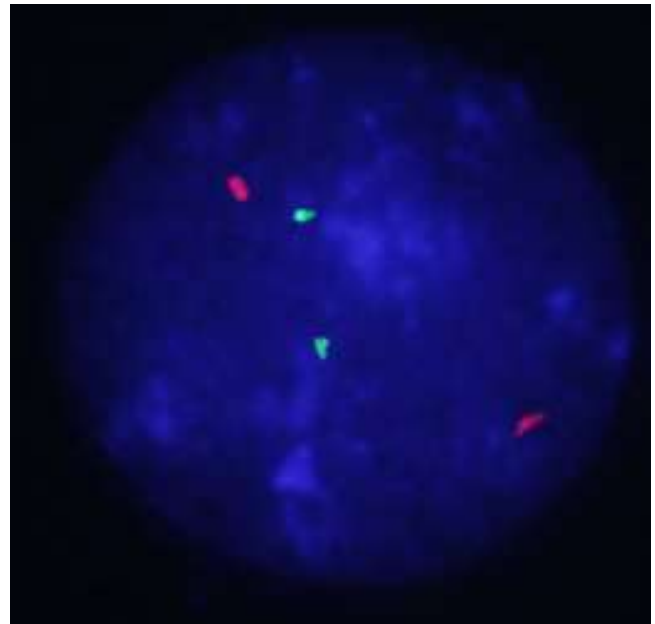
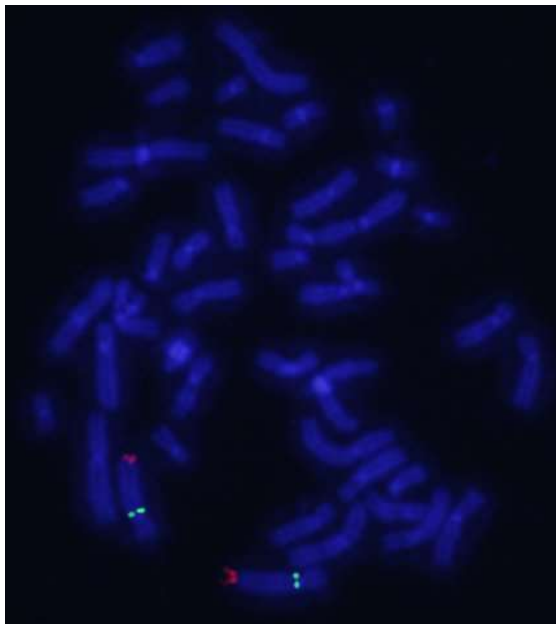
~160kb

CEN5q

51.6 51.8 52.0 52.2 52.4 52.6 52.8 (MB)



~700kb



representative images of normal human cell (lymphocyte) stain with the dual color FISH probe. The left image is chromosomes at metaphase, and the right image is an interphase nucleus.