

Probe EGR1/CEN5q Dual Color FISH Probe
Product No. GC186

EGR1

Probe Size Approximately 260kb
Fluorophore TexRed
Location 5q31.1
Also known as TIS8; AT225; G0S30; NGFI-A; ZNF225; KROX-24; ZIF-268

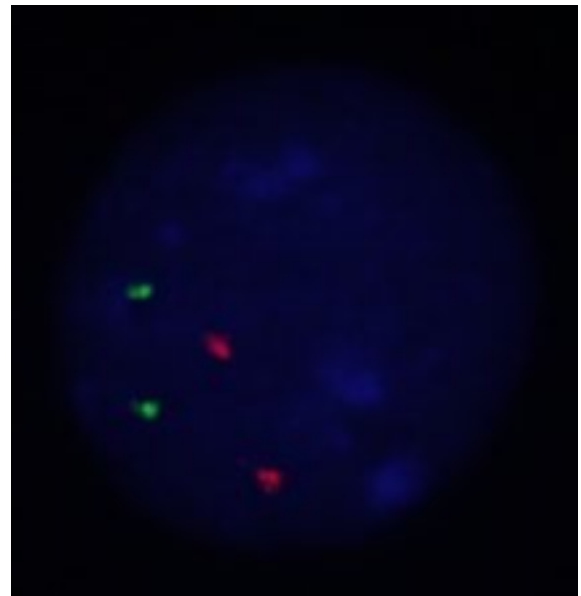
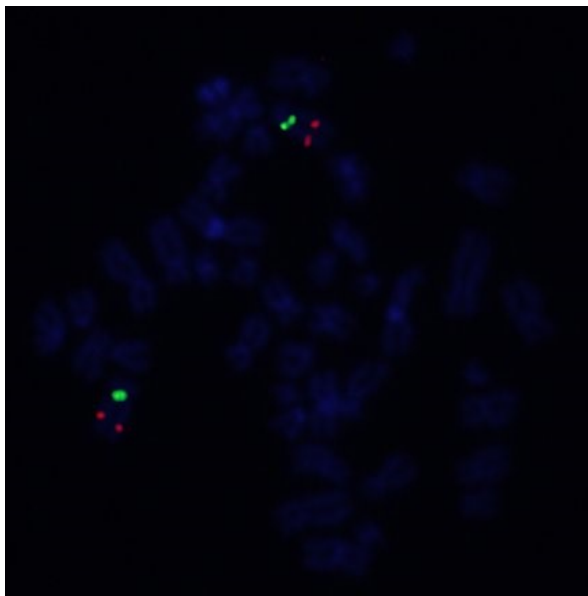
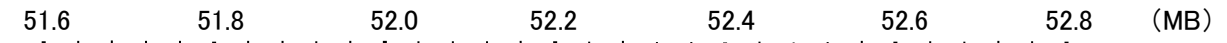
CEN5q

Probe Size Approximately 700kb
Fluorophore FITC
Location 5q11.2

EGR1



CEN5q



Representative images of normal human cell (lymphocyte) stain with the dual color FISH probe. The left image is chromosomes at metaphase, and the right image is an interphase nucleus.