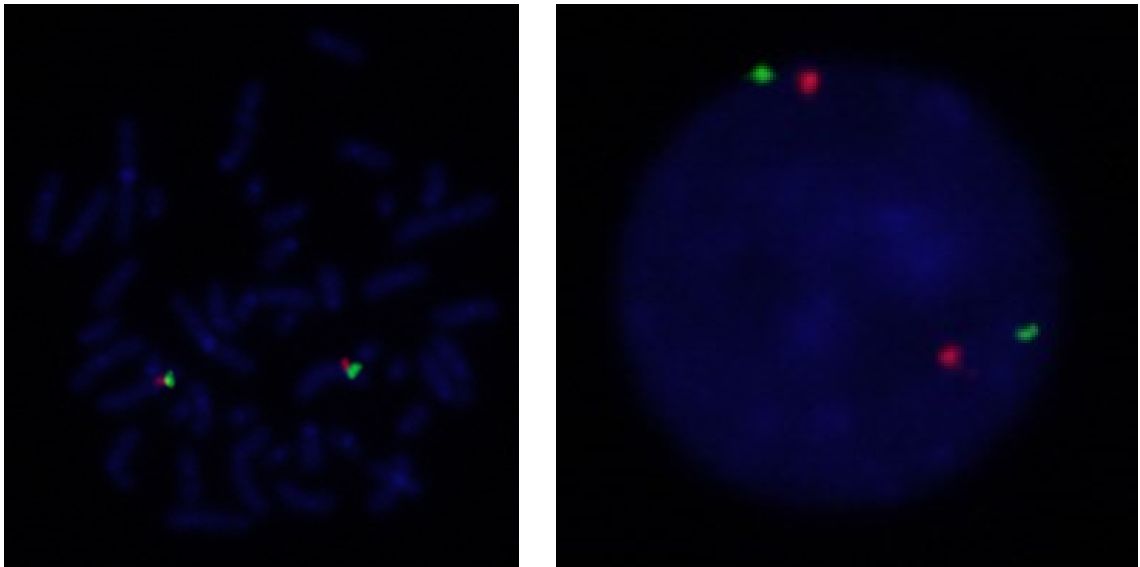
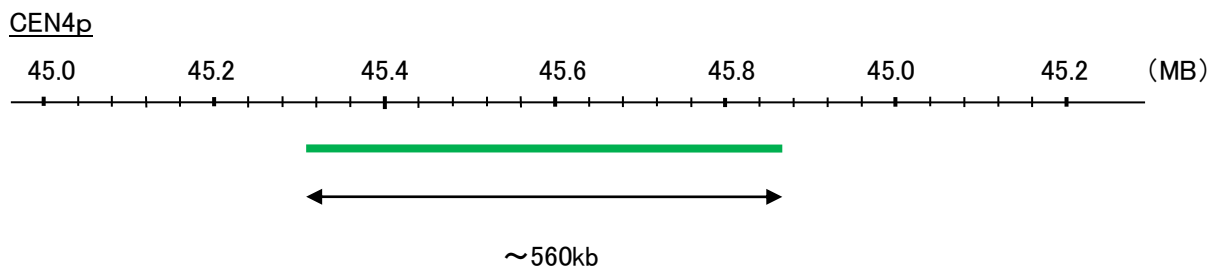
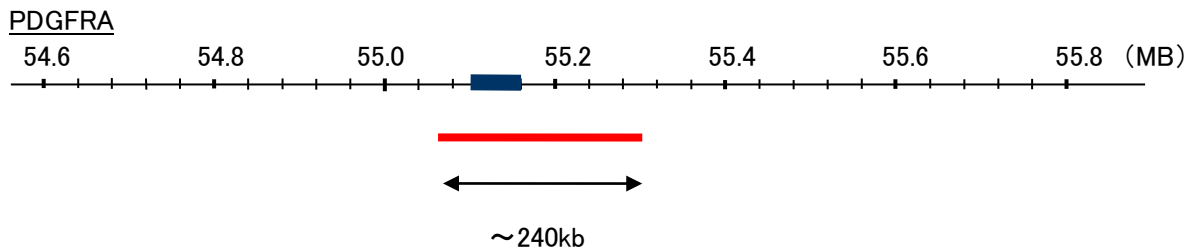


Probe PDGFRA/CEN4p Dual Color FISH Probe  
Product No. GC091

PDGFRA  
Probe Size Approximately 240kb  
Fluorophore TexRed  
Location 4q12  
Also known as CD140A; PDGFR2; PDGFR-2; RHEPDGFRA

CEN4p  
Probe Size Approximately 560kb  
Fluorophore FITC  
Location 4p13



Representative images of normal human cell (lymphocyte) stain with the dual color FISH probe. The left image is chromosomes at metaphase, and the right image is an interphase nucleus.