

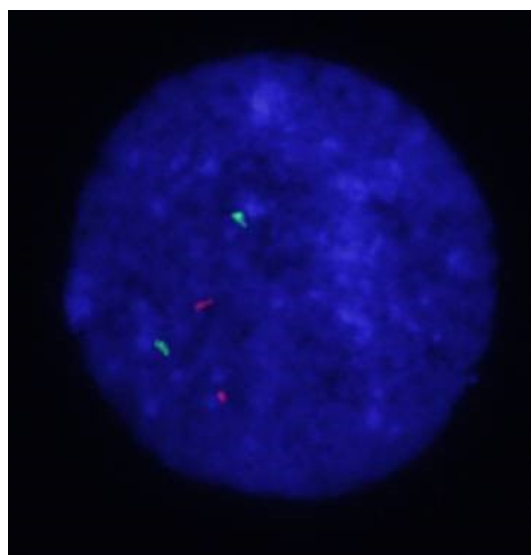
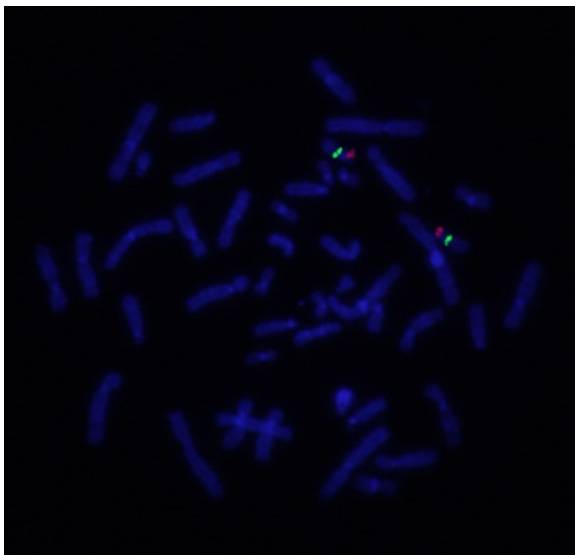
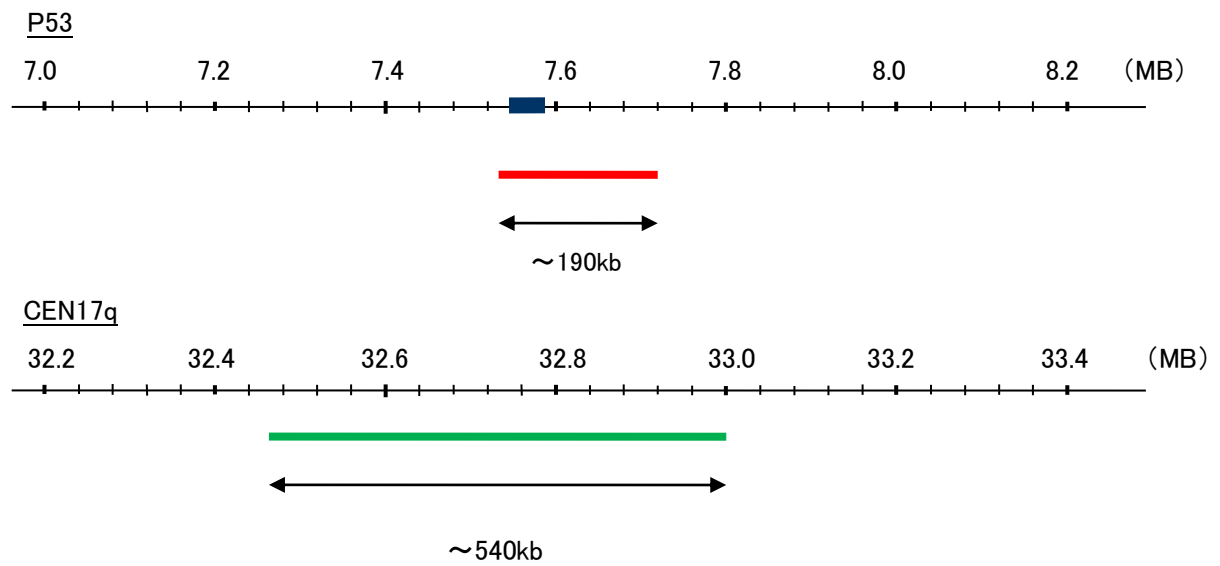
Probe p53/CEN17q Dual Color FISH Probe
Product No. GC011

P53

Probe Size Approximately 190kb
Fluorophore TexRed
Location 17p13.1
Also known as TP53; BCC7; LFS1; TRP53

CEN17q

Probe Size Approximately 540kb
Fluorophore FITC
Location 17q11.2



Representative images of normal human cell (lymphocyte) stain with the dual color FISH probe. The left image is chromosomes at metaphase, and the right image is an interphase nucleus.