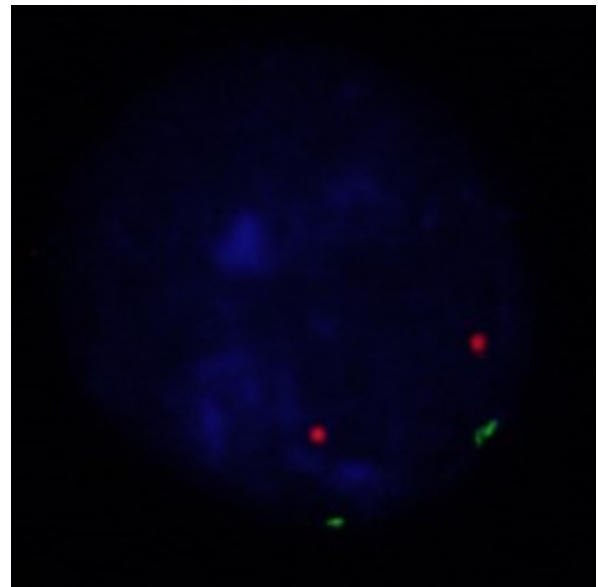
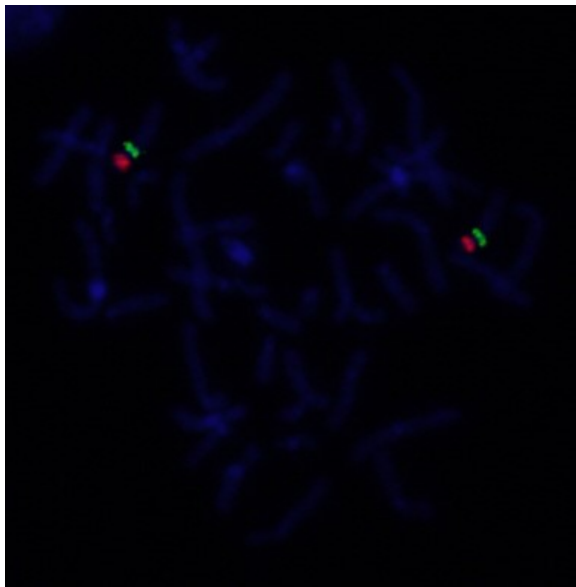
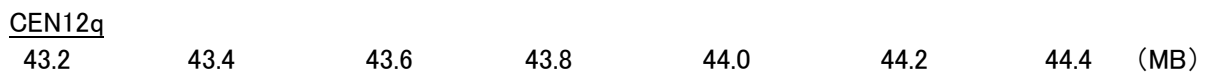
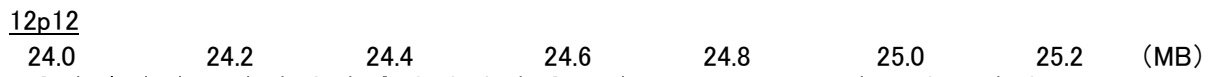


Probe 12p12/CEN12q ISO Dual Color FISH Probe
Product No. GC110

12p12
Probe Size Approximately 460kb
Fluorophore TexRed
Location 12p12

CEN12q
Probe Size Approximately 580kb
Fluorophore FITC
Location 12q12



Representative images of normal human cell (lymphocyte) stain with the dual color FISH probe. The left image is chromosomes at metaphase, and the right image is an interphase nucleus.