

Probe OCN/CEN1q Dual Color FISH Probe
Product No. GC187

OCN

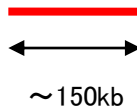
Probe Size Approximately 150kb
Fluorophore TexRed
Location 1q22
Also known as OC; BGP; BGLAP

CEN1q

Probe Size Approximately 600kb
Fluorophore FITC
Location 1q21.3

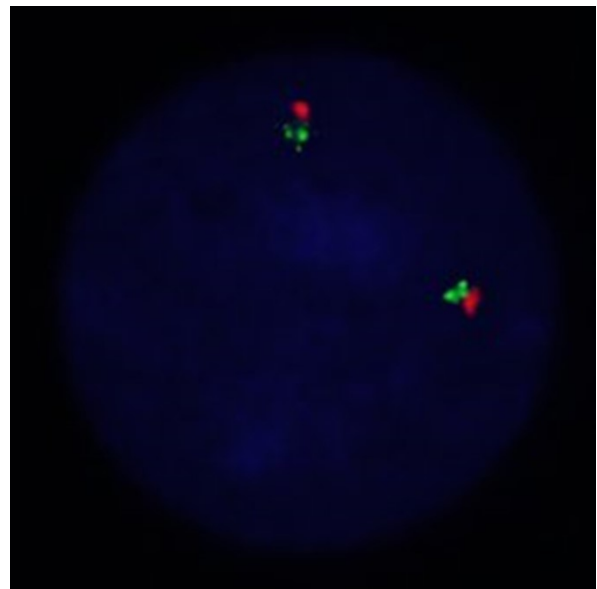
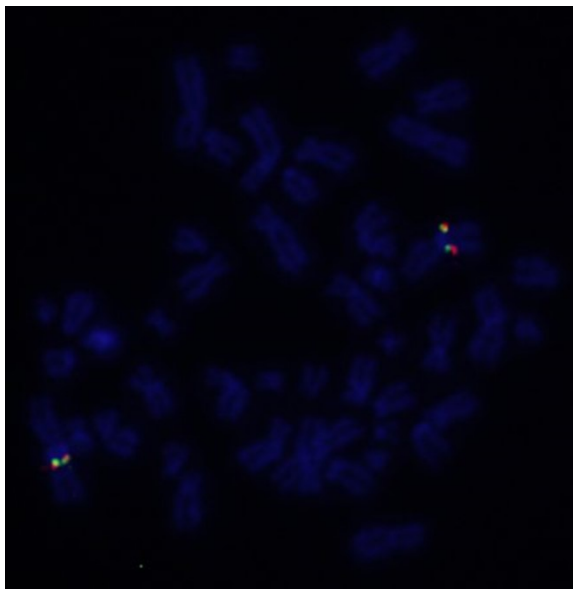
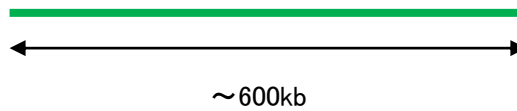
OCN

155.6 155.8 156.0 156.2 156.4 156.6 156.8 (MB)



CEN1q

153.6 153.8 154.0 154.2 154.4 154.6 154.8 (MB)



Representative images of normal human cell (lymphocyte) stain with the dual color FISH probe. The left image is chromosomes at metaphase, and the right image is an interphase nucleus.