

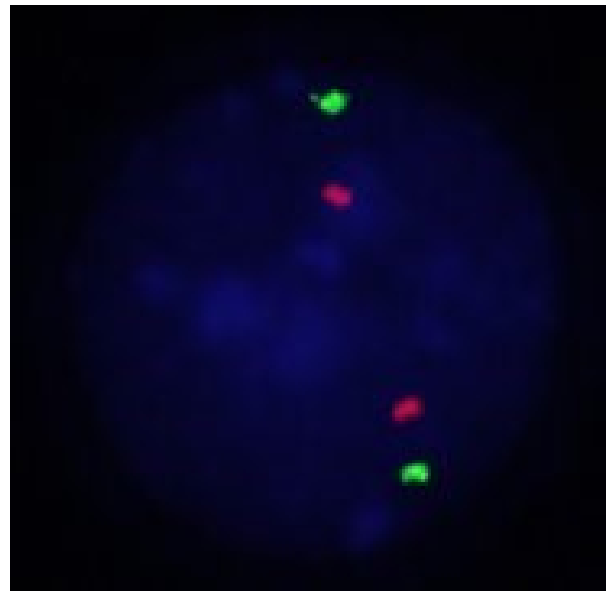
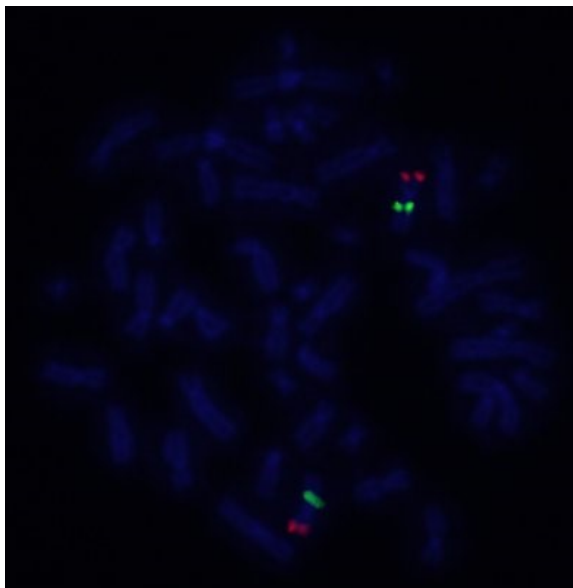
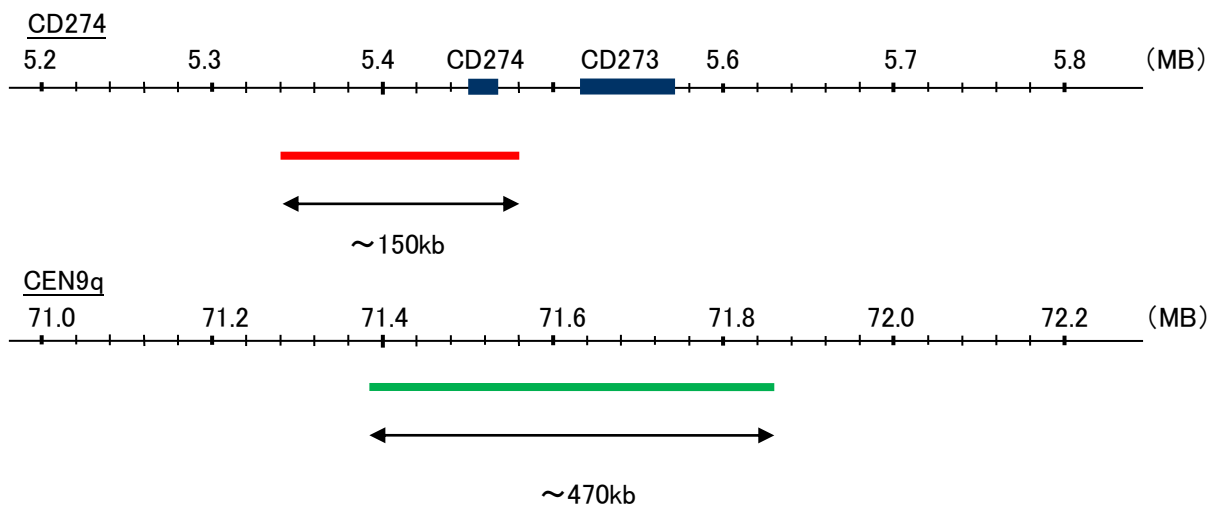
Probe CD274/CEN9q Dual Color FISH Probe(V.2)
Product No. GC197

CD274

Probe Size Approximately 150kb
Fluorophore TexRed
Location 9p24
Also known as B7-H; B7H1; PDL1; PD-L1; PDCD1L1; PDCD1LG1

CEN9q

Probe Size Approximately 470kb
Fluorophore FITC
Location 9q21



Representative images of normal human cell (lymphocyte) stain with the dual color FISH probe. The left image is chromosomes at metaphase, and the right image is an interphase nucleus.