

Probe YB1/CEN1p Dual Color FISH Probe
Product No. GC196

YB1

Probe Size Approximately 230kb

Fluorophore TexRed

Location 1p34

Also known as YBX1; BP-8; CSDB; DBPB; YB-1; CBF-A; CSDA2; EFI-A; NSEP1; NSEP-1; MDR-NF1

CEN1p

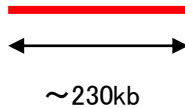
Probe Size Approximately 780kb

Fluorophore FITC

Location 1p13.3

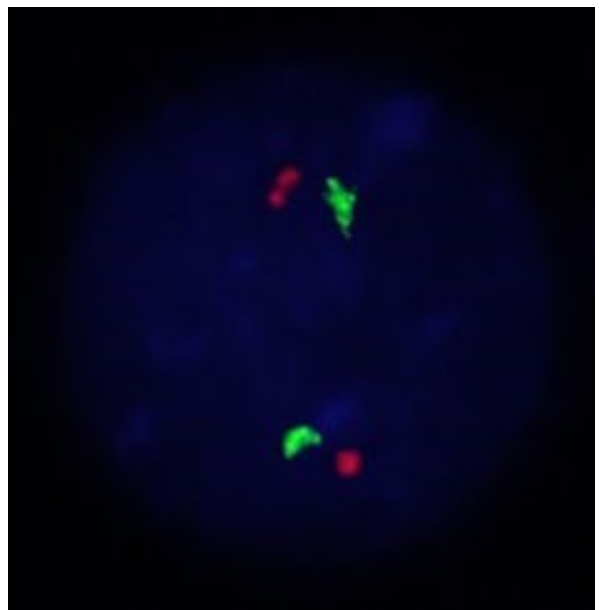
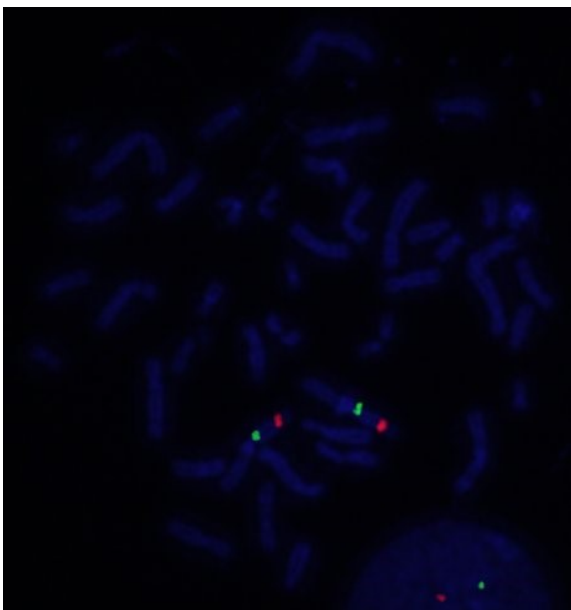
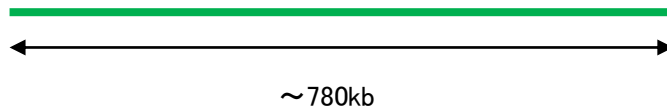
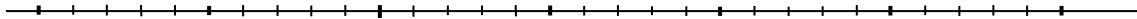
YB1

42.6 42.8 43.0 43.2 43.4 43.6 43.8 (MB)



CEN1p

109.6 109.8 110.0 110.2 110.4 110.6 110.8 (MB)



Representative images of normal human cell (lymphocyte) stain with the dual color FISH probe. The left image is chromosomes at metaphase, and the right image is an interphase nucleus.