

Probe TYMP/CEN22q Dual Color FISH Probe
Product No. GC153

TYMP

Probe Size Approximately 150kb

Fluorophore TexRed

Location 22q13

Also known as TP; ECGF; ECGF1; MNGIE; MEDPS1; MTDPS1; PDECGF; hPD-ECGF

CEN22q

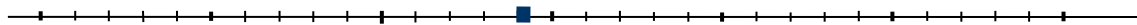
Probe Size Approximately 620kb

Fluorophore FITC

Location 22q11.22

TYMP

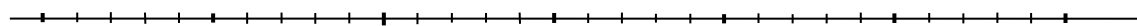
50.4 50.6 50.8 51.0 51.2 51.4 51.6 (MB)



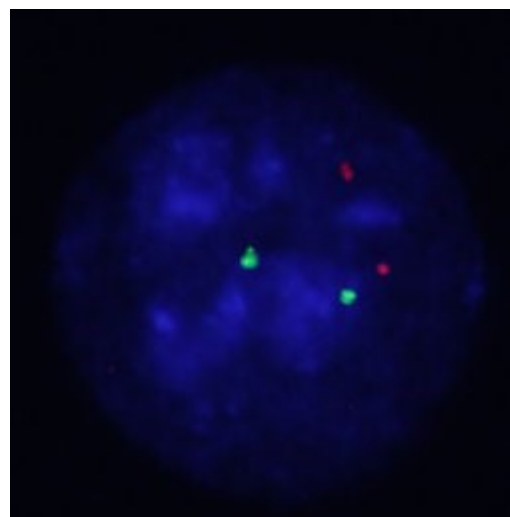
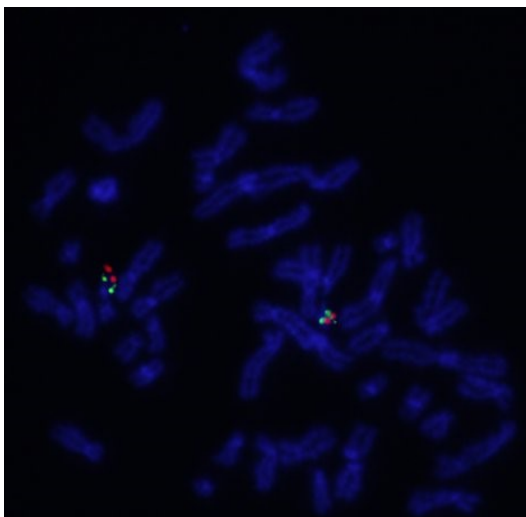
~150kb

CEN22q

25.0 25.2 25.4 25.6 25.8 25.0 25.2 (MB)



~620kb



Representative images of normal human cell (lymphocyte) stain with the dual color FISH probe. The left image is chromosomes at metaphase, and the right image is an interphase nucleus.