

Probe EGR1/CEN5q Dual Color FISH Probe
Product No. GC186

EGR1

Probe Size Approximately 260kb
Fluorophore TexRed
Location 5q31.1
Also known as TIS8; AT225; G0S30; NGFI-A; ZNF225; KROX-24; ZIF-268

CEN5q

Probe Size Approximately 700kb
Fluorophore FITC
Location 5q11.2

EGR1

137.2 137.4 137.6 137.8 138.0 138.2 138.4 (MB)



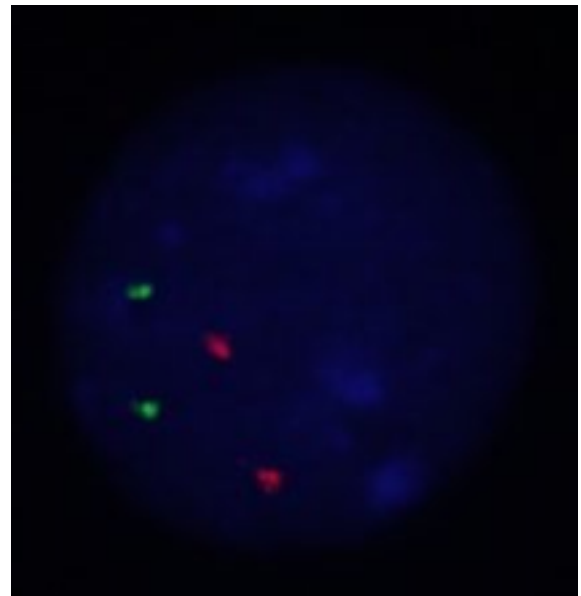
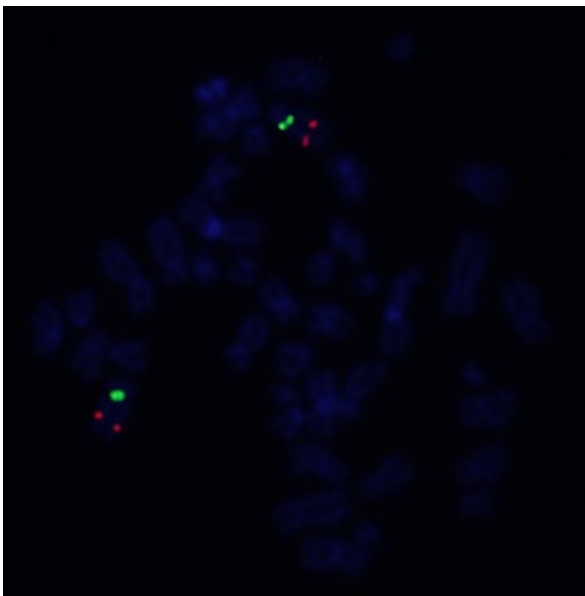
~260kb

CEN5q

51.6 51.8 52.0 52.2 52.4 52.6 52.8 (MB)



~700kb



Representative images of normal human cell (lymphocyte) stain with the dual color FISH probe. The left image is chromosomes at metaphase, and the right image is an interphase nucleus.