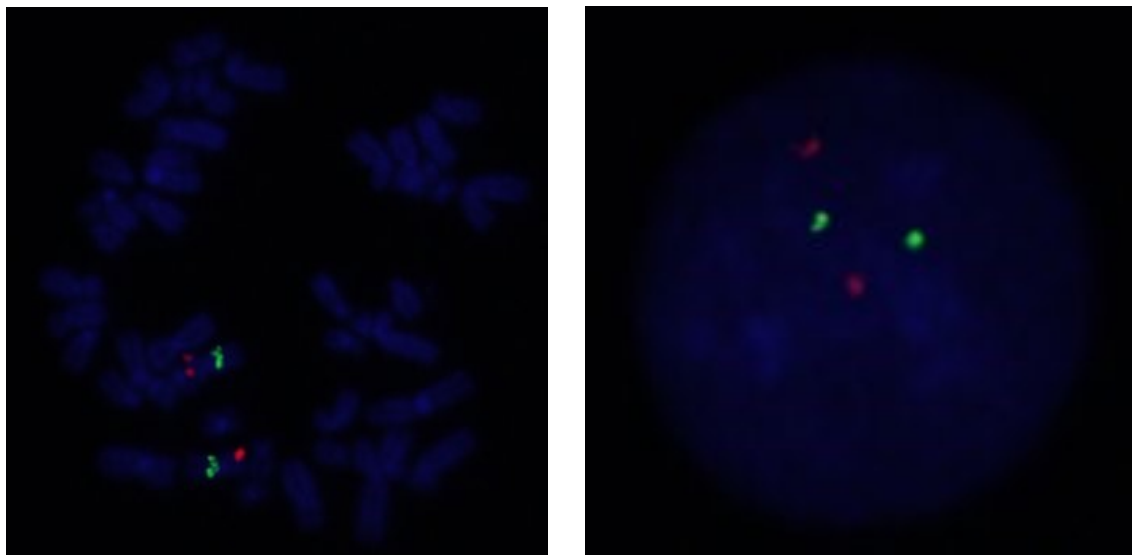
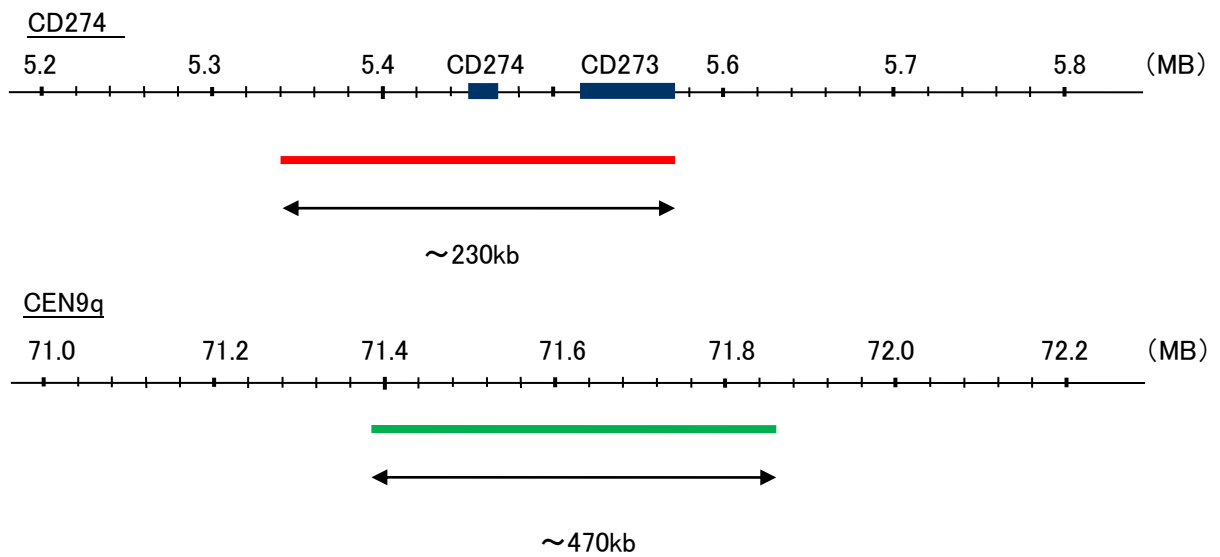


Probe CD274/CEN9q Dual Color FISH Probe  
Product No. GC141

**CD274**  
Probe Size Approximately 230kb  
Fluorophore TexRed  
Location 9p24  
Also known as B7-H; B7H1; PDL1; PD-L1; PDCD1L1; PDCD1LG1

**CEN9q**  
Probe Size Approximately 470kb  
Fluorophore FITC  
Location 9q21



Representative images of normal human cell (lymphocyte) stain with the dual color FISH probe. The left image is chromosomes at metaphase, and the right image is an interphase nucleus.

**Reference**

Mod Pathol. 2016 Dec 9. doi: 10.1038/modpathol.2016.202. [Epub ahead of print]  
Overexpression and gene amplification of PD-L1 in cancer cells and PD-L1+ immune cells in Epstein-Barr virus-associated gastric cancer: the prognostic implications