

Probe Xq27/CENXp Dual Color FISH Probe(V.2)  
Product No. GC199

Xq27

Probe Size Approximately 240kb  
Fluorophore TexRed  
Location Xq27.3

CENXp

Probe Size Approximately 550kb  
Fluorophore FITC  
Location Xp11.22

Xq27

144.6 144.8 145.0 145.2 145.4 145.6 145.8 (MB)



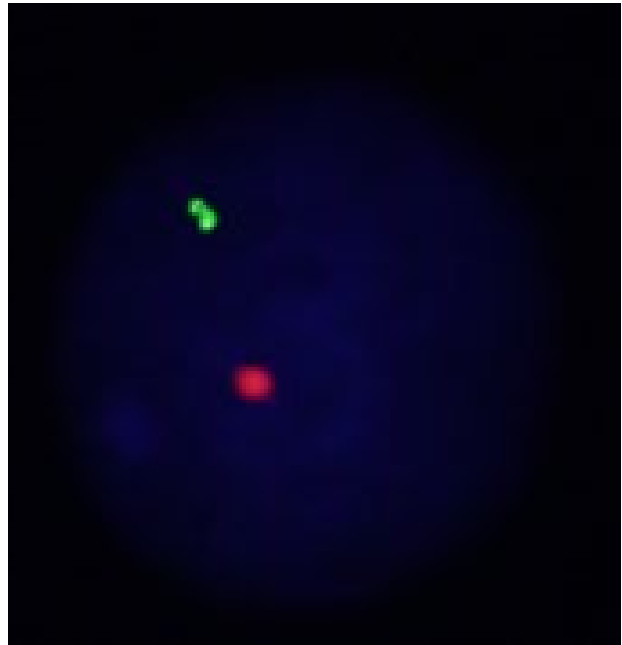
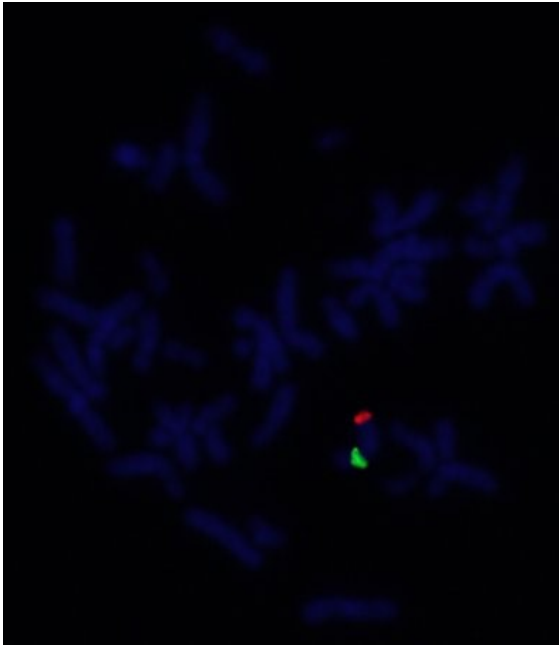
~240kb

CENXp

48.8 49.0 49.2 49.4 49.6 49.8 50.0 (MB)



~550kb



Representative images of normal human cell (lymphocyte) stain with the dual color FISH probe. The left image is chromosomes at metaphase, and the right image is an interphase nucleus.