

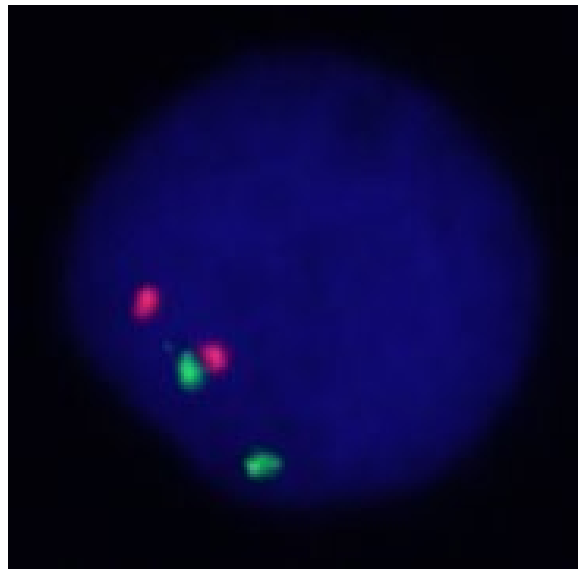
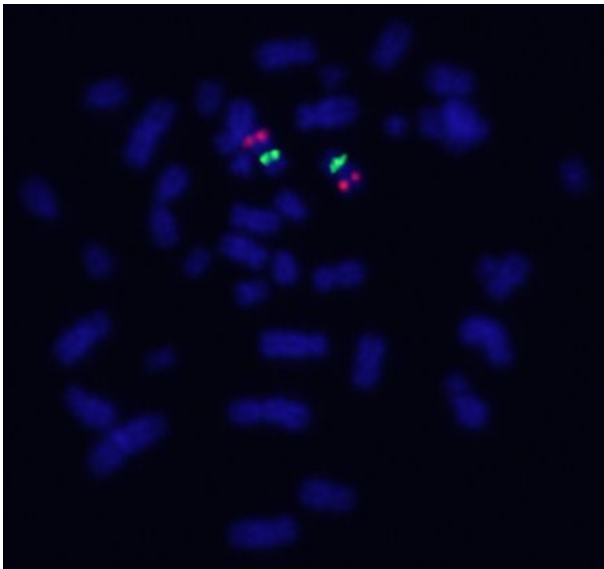
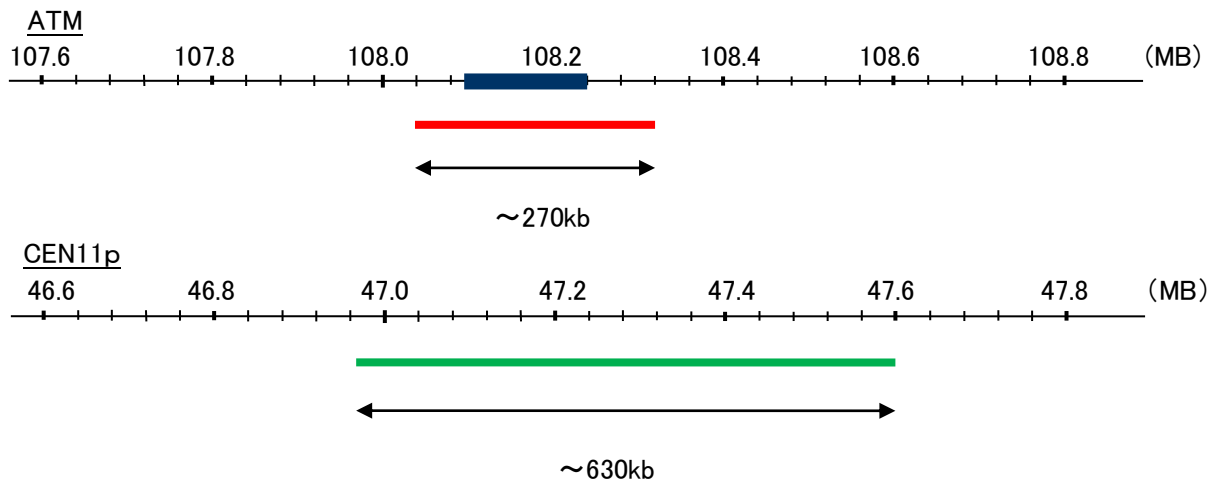
Probe ATM/CEN11p Dual Color FISH Probe  
Product No. GC203

ATM

Probe Size Approximately 270kb  
Fluorophore TexRed  
Location 11q22.3  
Also known as AT1; ATA; ATC; ATD; ATE; ATDC; TEL1; TELO1

CEN11p

Probe Size Approximately 630kb  
Fluorophore FITC  
Location 11p11.12



Representative images of normal human cell (lymphocyte) stain with the dual color FISH probe. The left image is chromosomes at metaphase, and the right image is an interphase nucleus.