

Probe p16/CEN9q Dual Color FISH Probe  
Product No. GC002

**P16**

Probe Size Approximately 110kb

Fluorophore TexRed

Location 9p21

Also known as CDKN2A; ARF; MLM; P14; P19; CMM2; INK4; MTS1; TP16; CDK4I; CDKN2; INK4A; MTS-1; P14ARF; P19ARF; P16INK4; P16INK4A; P16-INK4A

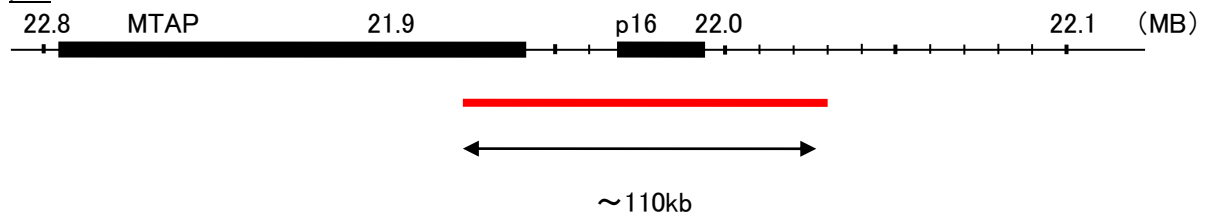
**CEN9q**

Probe Size Approximately 470kb

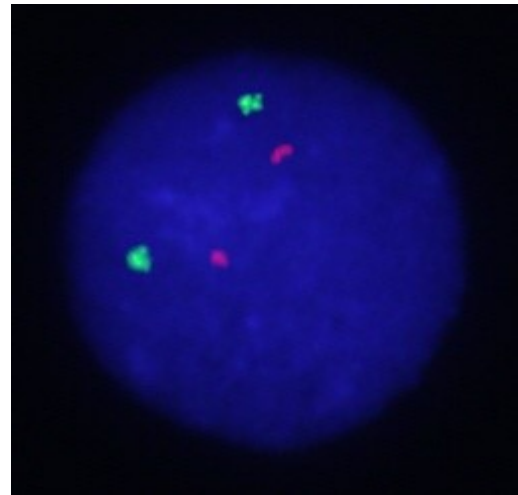
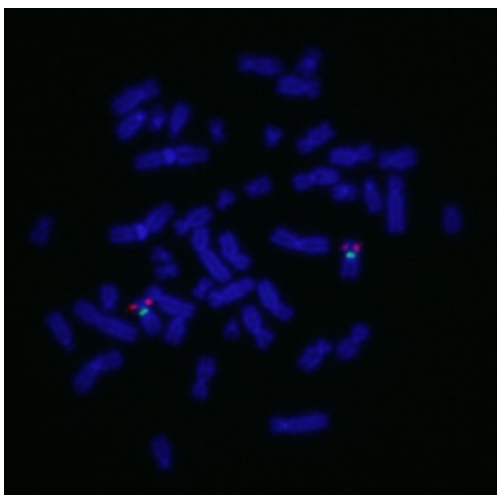
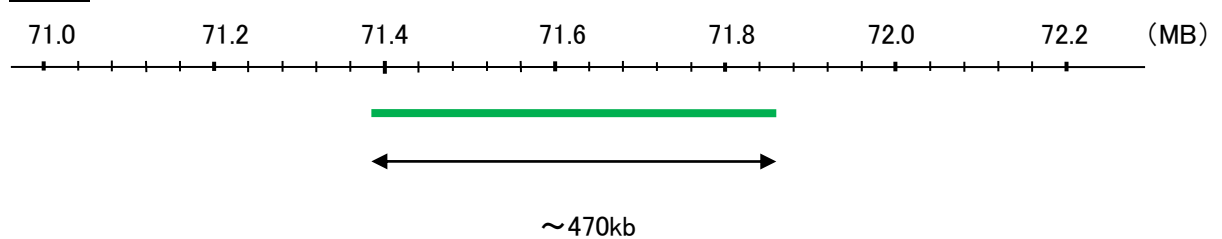
Fluorophore FITC

Location 9q21

p16



CEN9q



Representative images of normal human cell (lymphocyte) stain with the dual color FISH probe. The left image is chromosomes at metaphase, and the right image is an interphase nucleus.