

Probe 11q23.3/11q24.3 Dual Color FISH Probe
Product No. GC214

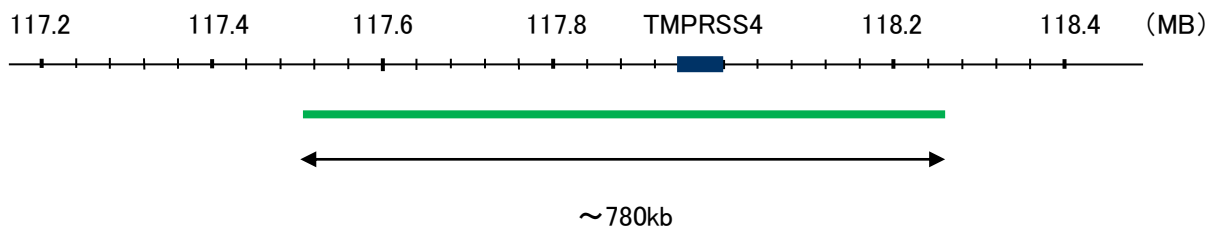
11q23.3

Probe Size Approximately 780kb
Fluorophore FITC
Location 11q23.3

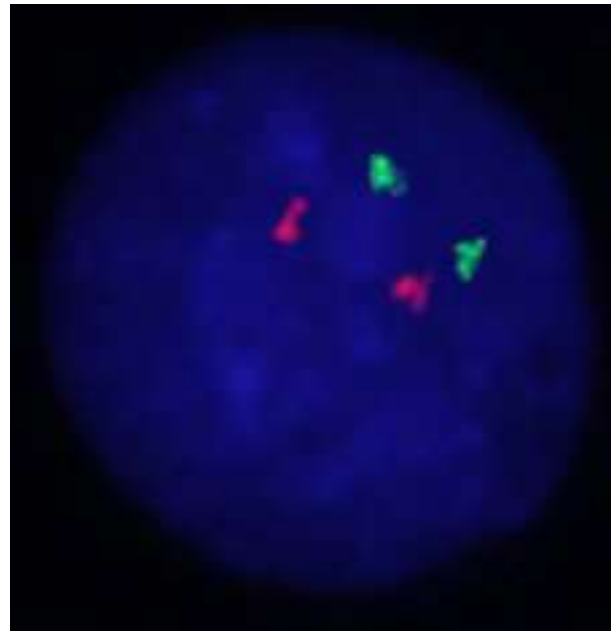
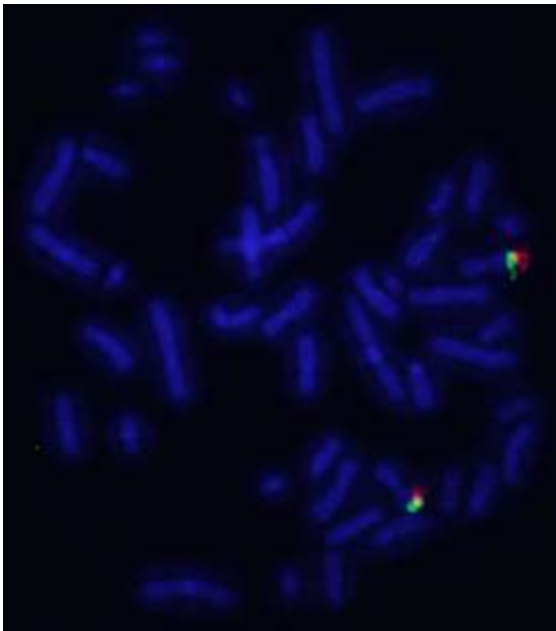
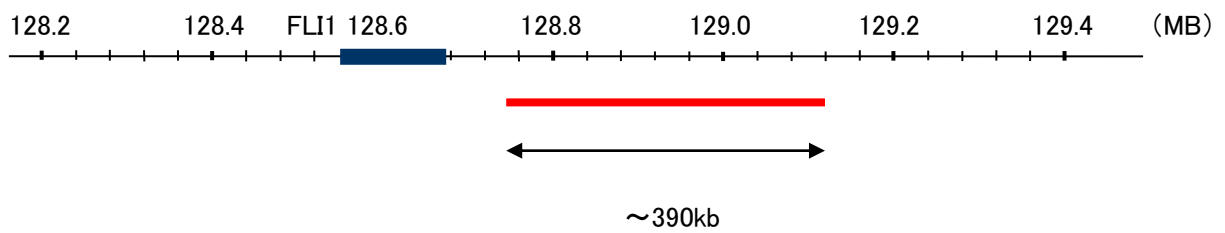
11q24.3

Probe Size Approximately 390kb
Fluorophore TexRed
Location 11q24.3

11q23.3



11q24.3



Representative images of normal human cell (lymphocyte) stain with the dual color FISH probe. The left image is chromosomes at metaphase, and the right image is an interphase nucleus.