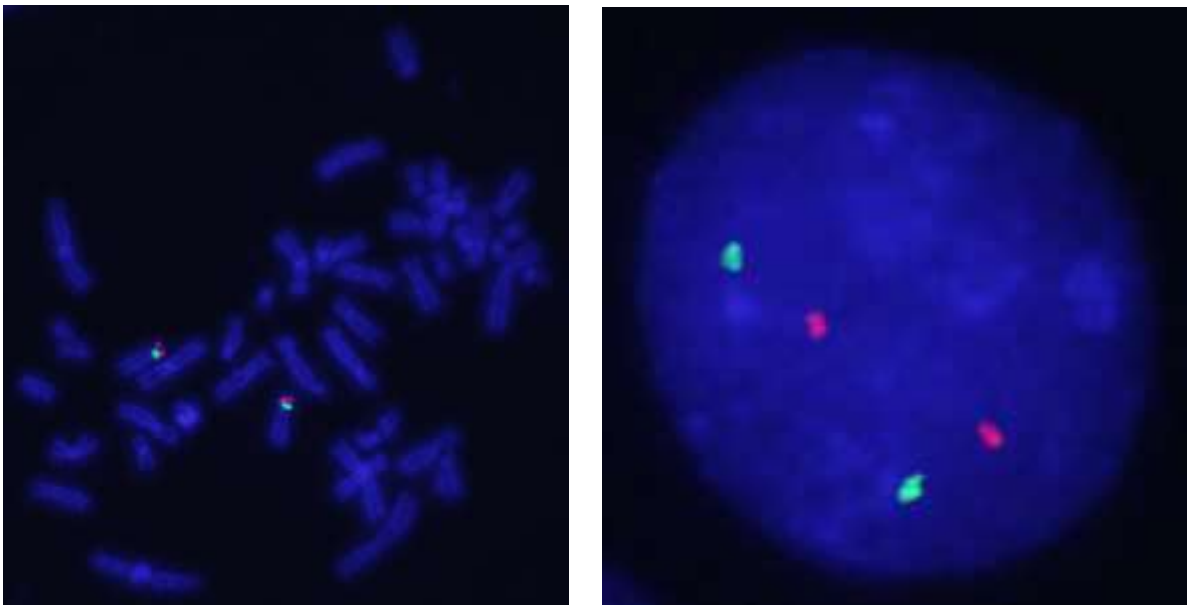
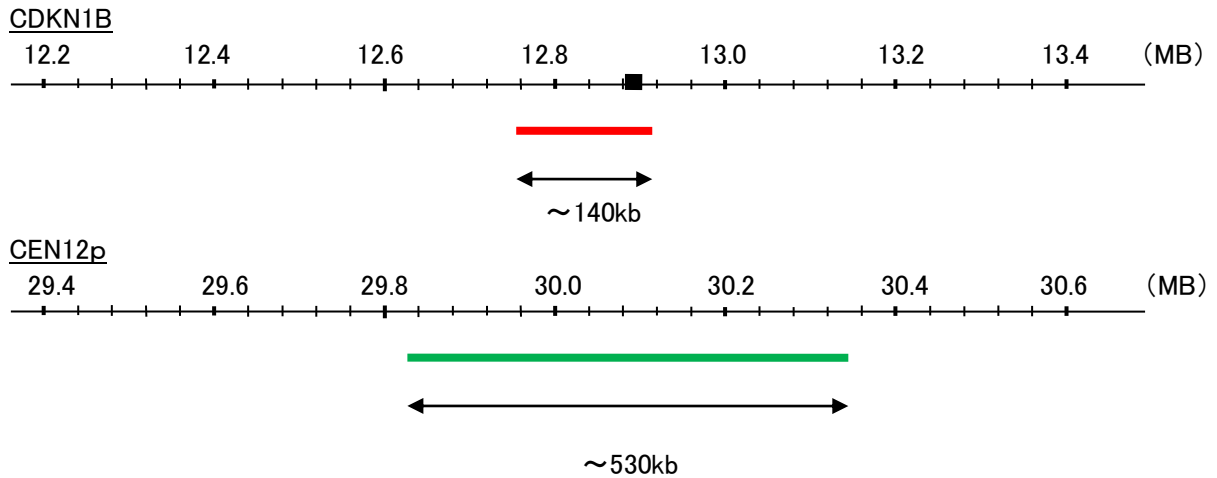


Probe CDKN1B/CEN12p Dual Color FISH Probe  
Product No. GC209

CDKN1B  
Probe Size Approximately 140kb  
Fluorophore TexRed  
Location 12p13.1  
Also known as KIP1; MEN4; CDKN4; MEN1B; P27KIP1

CEN12p  
Probe Size Approximately 530kb  
Fluorophore FITC  
Location 12p11.22



Representative images of normal human cell (lymphocyte) stain with the dual color FISH probe. The left image is chromosomes at metaphase, and the right image is an interphase nucleus.