

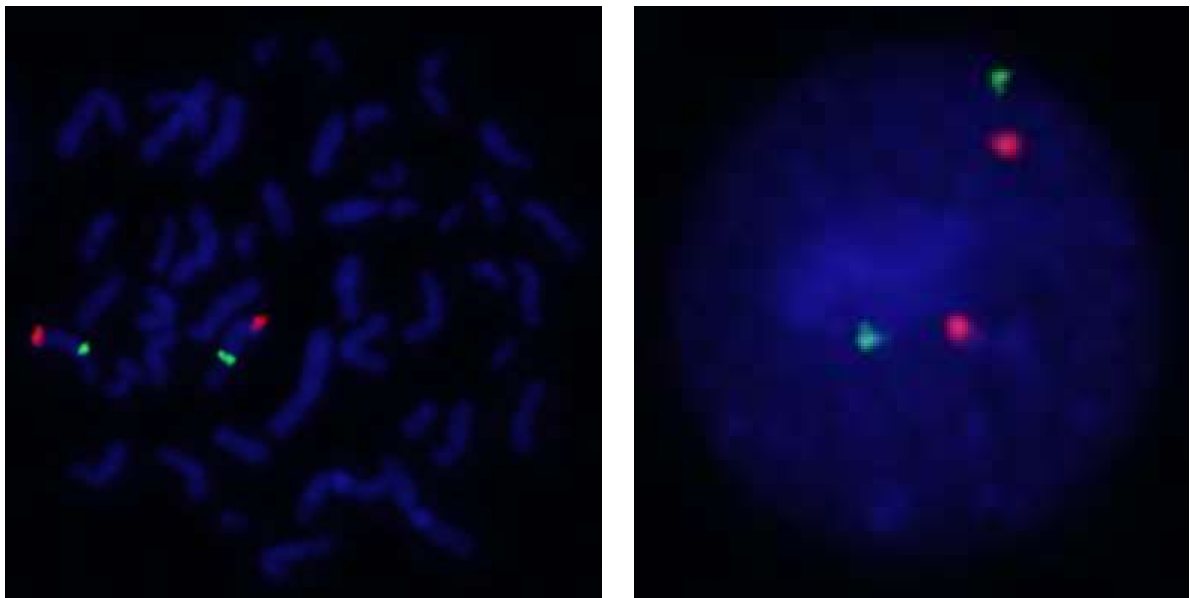
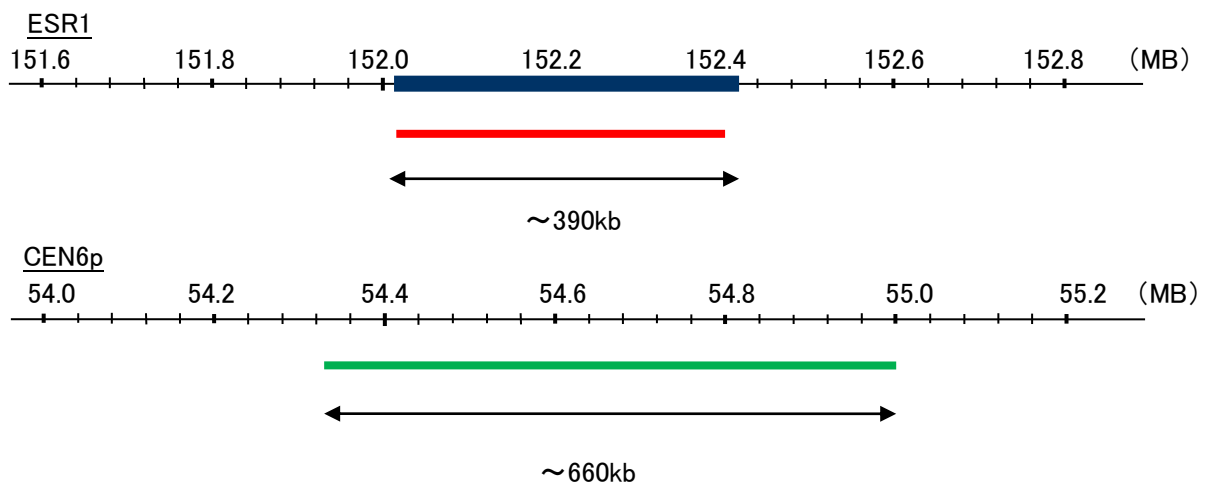
Probe ESR1/CEN6p Dual Color FISH Probe
Product No. GC213

ESR1

Probe Size Approximately 390kb
Fluorophore TexRed
Location 6p25.1-q25.2
Also known as ER; ESR; Era; ESRA; ESTRR; NR3A1

CEN6p

Probe Size Approximately 660kb
Fluorophore FITC
Location 6p12.1



Representative images of normal human cell (lymphocyte) stain with the dual color FISH probe. The left image is chromosomes at metaphase, and the right image is an interphase nucleus.