

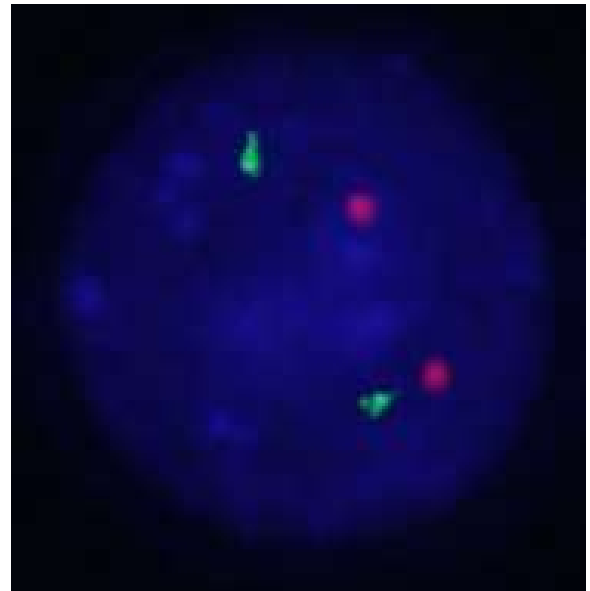
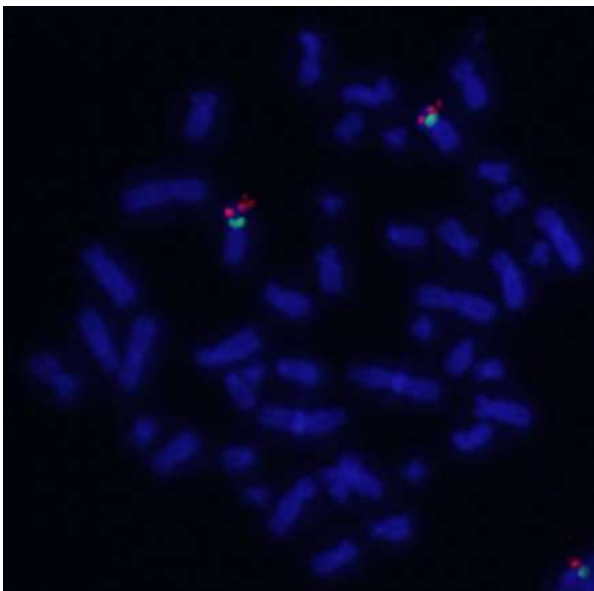
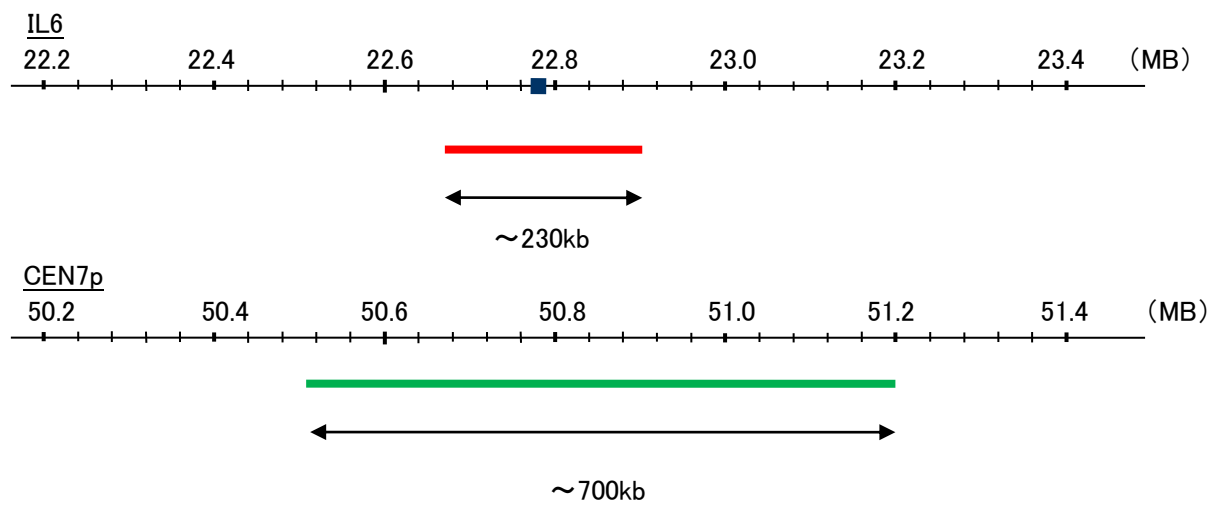
Probe IL6/CEN7p Dual Color FISH Probe
Product No. GC210

IL6

Probe Size Approximately 230kb
Fluorophore TexRed
Location 7p15.3
Also known as CDF; HGF; HSF; BSF2; IL-6; BSF-2; IFNB2; IFN-beta-2

CEN7p

Probe Size Approximately 700kb
Fluorophore FITC
Location 7p12.1



Representative images of normal human cell (lymphocyte) stain with the dual color FISH probe. The left image is chromosomes at metaphase, and the right image is an interphase nucleus.