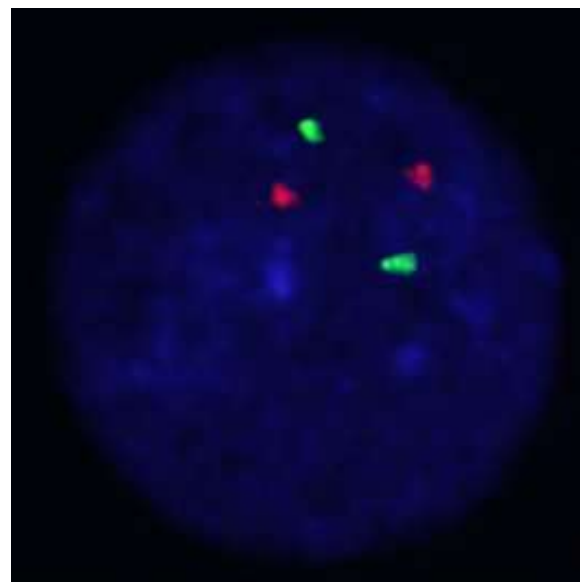
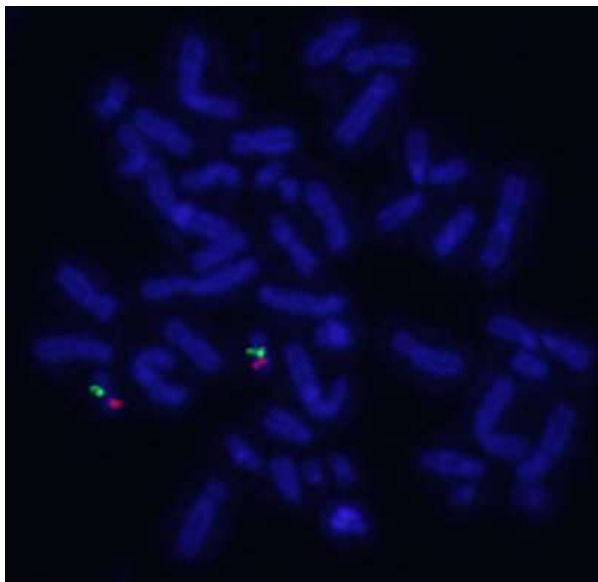
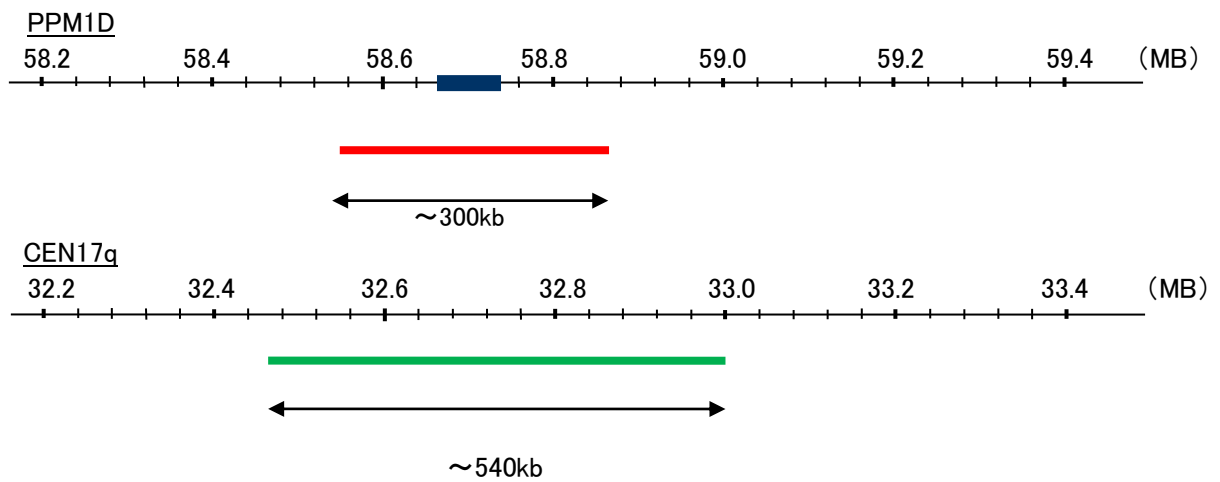


Probe PPM1D/CEN17q Dual Color FISH Probe
Product No. GC212

PPM1D
Probe Size Approximately 300kb
Fluorophore TexRed
Location 17p23.2
Also known as WIP1; IDDGIIP; PP2C-DELTA

CEN17q
Probe Size Approximately 540kb
Fluorophore FITC
Location 17q11.2



Representative images of normal human cell (lymphocyte) stain with the dual color FISH probe. The left image is chromosomes at metaphase, and the right image is an interphase nucleus.