

Probe SMAD4 /CEN18q FISH Probe  
Product No. GC208

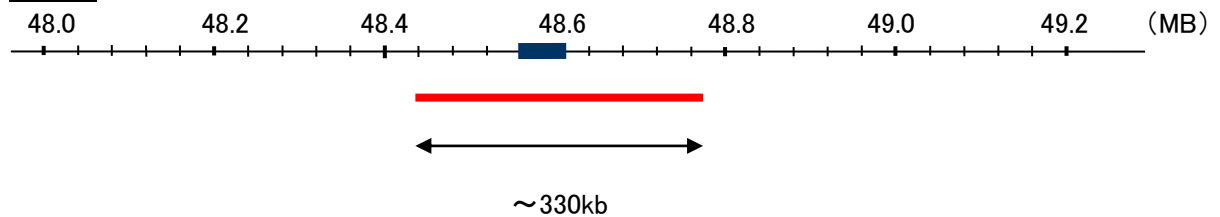
**SMAD4**

Probe Size Approximately 330kb  
Fluorophore TexRed  
Location 18q21.2  
Also known as JIP; DPC4; MADH4; MYHRS

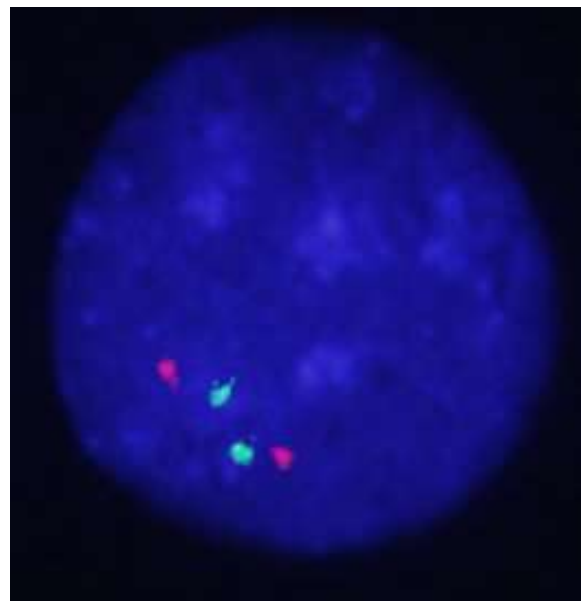
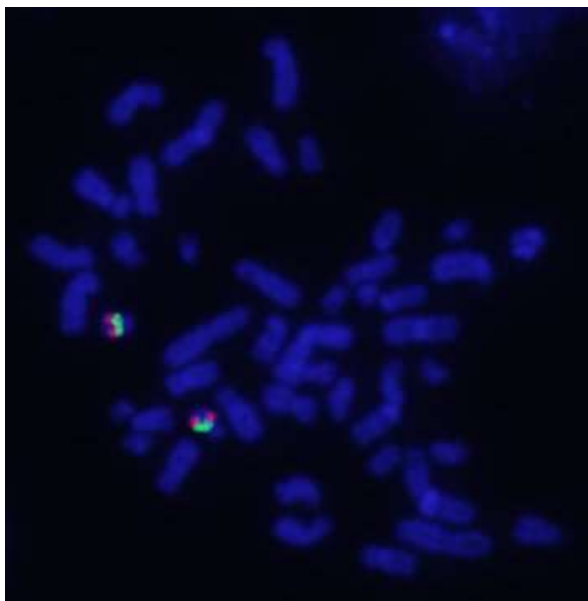
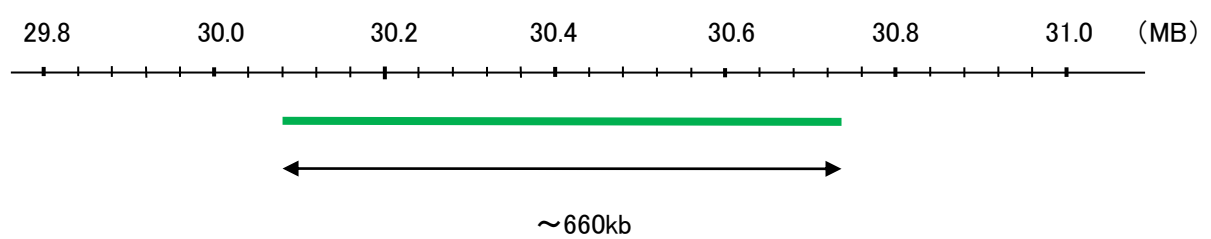
**CEN18q**

Probe Size Approximately 660kb  
Fluorophore FITC  
Location 18q11.2

**SMAD4**



**CEN18q**



Representative images of normal human cell (lymphocyte) stain with the dual color FISH probe. The left image is chromosomes at metaphase, and the right image is an interphase nucleus.