

Probe B2M/CEN15q Dual Color FISH Probe
GC236

B2M

Probe Size Approximately 150kb
Fluorophore TexRed
Location 15q21.1

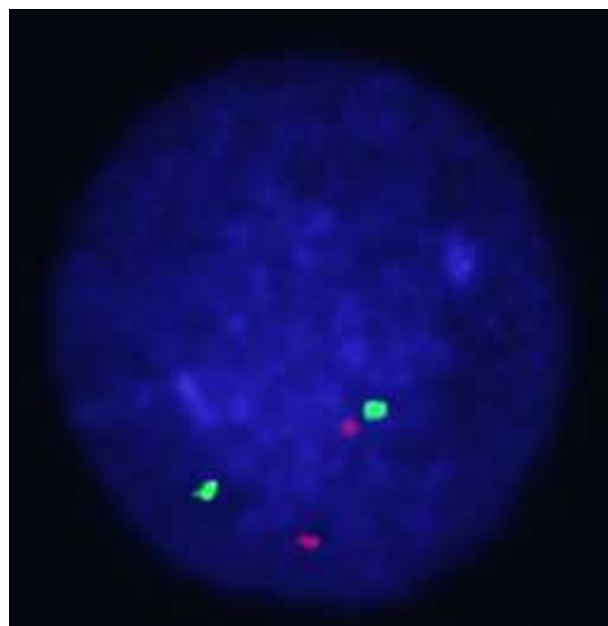
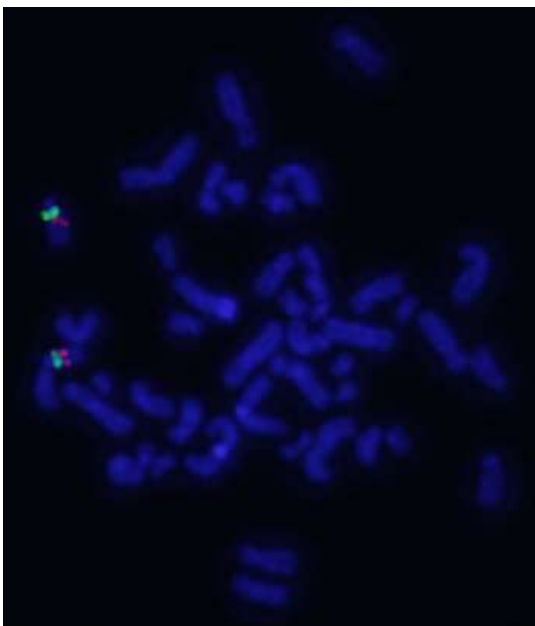
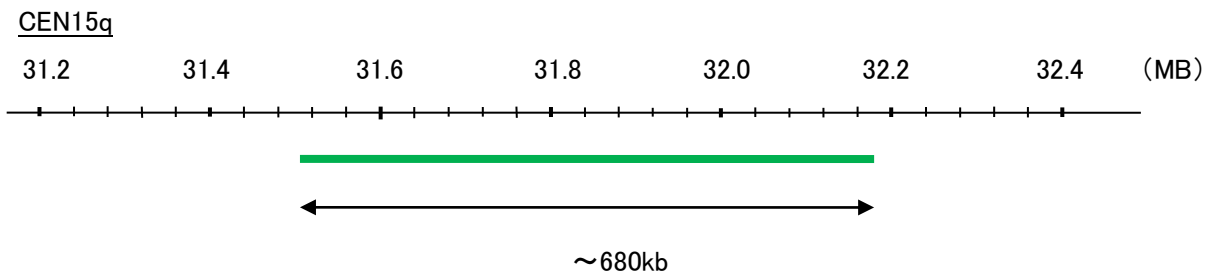
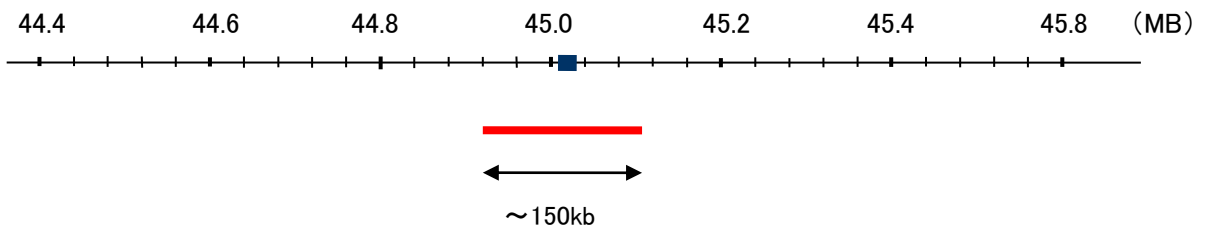
CEN15q

Probe Size Approximately 680kb
Fluorophore FITC
Location 15q11.2

Expire

Storage 4°C
Origin Human
Source Genomic DNA

B2M



representative images of normal human cell (lymphocyte) stain with the dual color FISH probe. The left image is chromosomes at metaphase, and the right image is an interphase nucleus.