

Probe 2-Color FISH Probe (CENXp, CENYq)  
Product No. CM2001

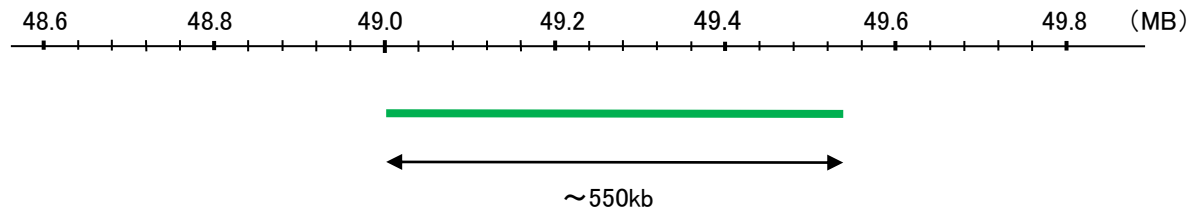
CENXp

Probe Size Approximately 550kb  
Fluorophore FITC  
Location Xp11.23

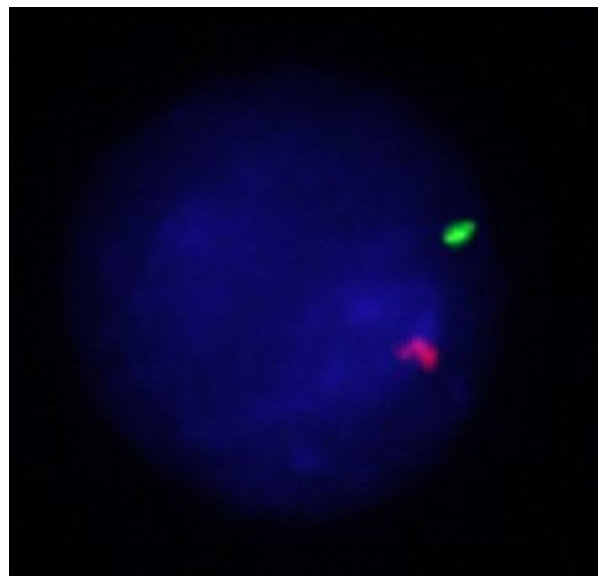
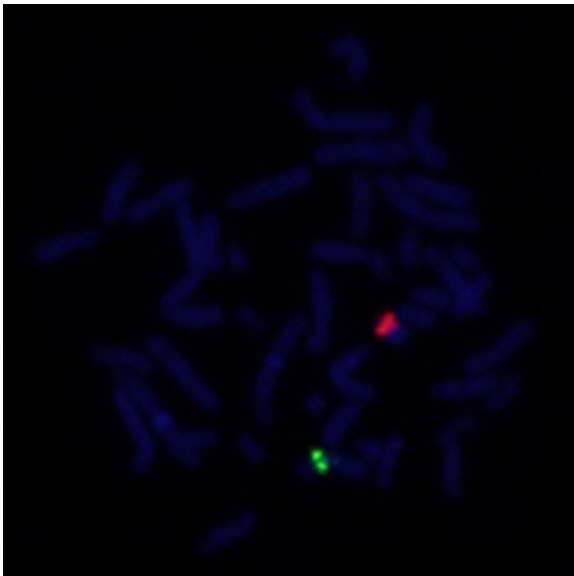
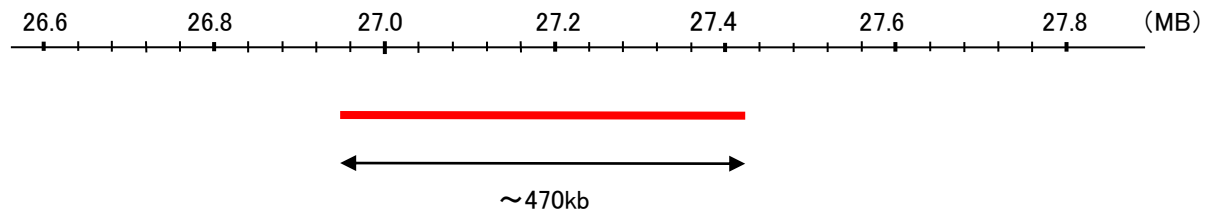
CENYq

Probe Size Approximately 470kb  
Fluorophore TexRed  
Location Yq11.221

CENXp



CENYq



Representative images of normal human cell (lymphocyte) stain with the dual color FISH probe. The left image is chromosomes at metaphase, and the right image is an interphase nucleus.