

Probe 4-Color FISH Probe (CEN1p/12q/17q/20q11.21)
Product No. CM4001

CEN1p

Probe Size Approximately 780kb
Fluorophore DEAC
Location 1p13.3

CEN12q

Probe Size Approximately 580kb
Fluorophore FITC
Location 12q12

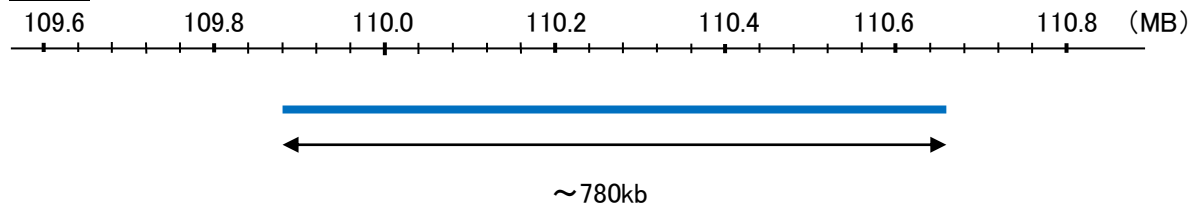
CEN17q

Probe Size Approximately 540kb
Fluorophore TexRed
Location 17q11.2

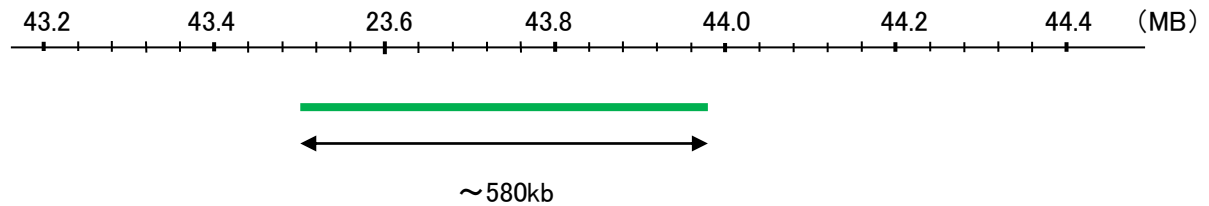
20q11.21 (ID1, BCL2L1 and HM13)

Probe Size Approximately 450kb
Fluorophore R6G
Location 20q11.21

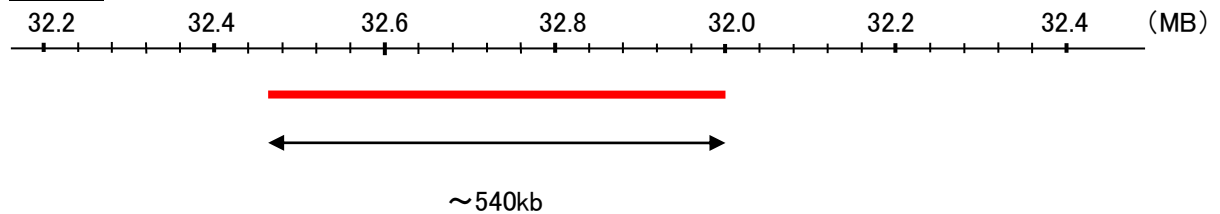
CEN1p



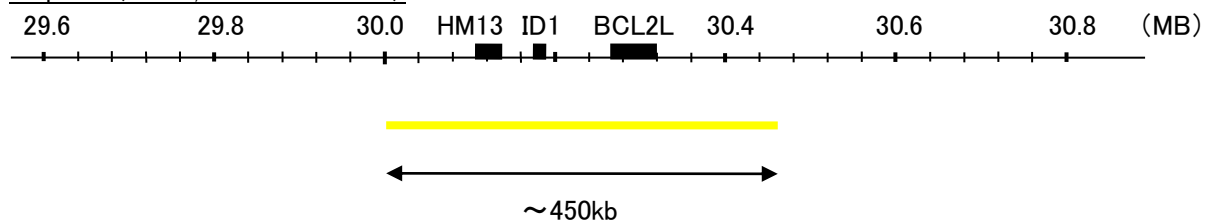
CEN12q

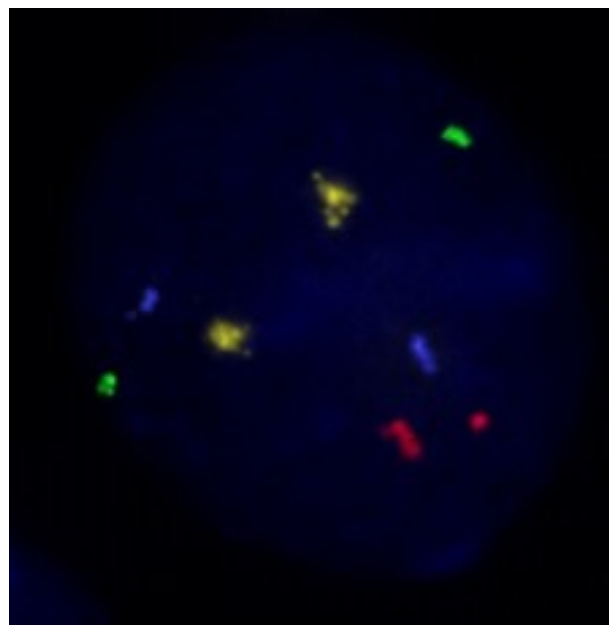
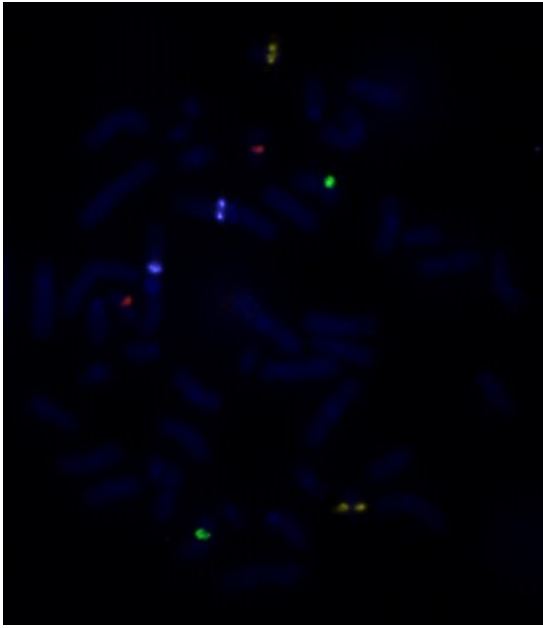


CEN17q



20q11.21 (HM13, ID1 and BCL2L1)





Representative images of normal human cell (lymphocyte) stain with the dual color FISH probe. The left image is chromosomes at metaphase, and the right image is an interphase nucleus.