

Probe 5-Color FISH Probe (CEN13q, CEN18q, CEN21q, CENXp, CENYq)
Product No. CM5001

CEN13q

Probe Size Approximately 550kb
Fluorophore DEAC
Location 13q12.11

CEN18q

Probe Size Approximately 660kb
Fluorophore Cy5
Location 18q11.2

CEN21q (DYRK1A Gene /Down syndrome critical region)

Probe Size Approximately 570kb
Fluorophore R6G
Location 21q22.13

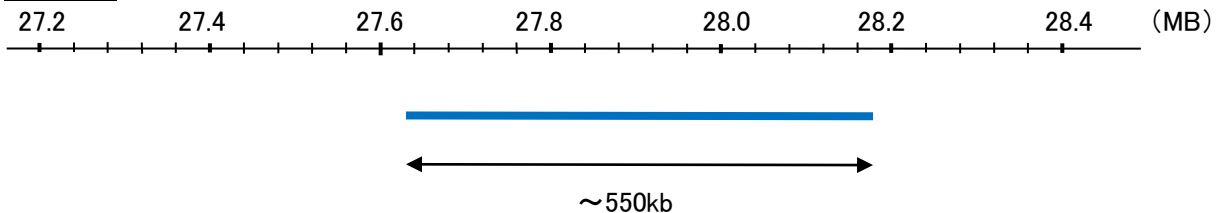
CENXp

Probe Size Approximately 550kb
Fluorophore FITC
Location Xp11.23

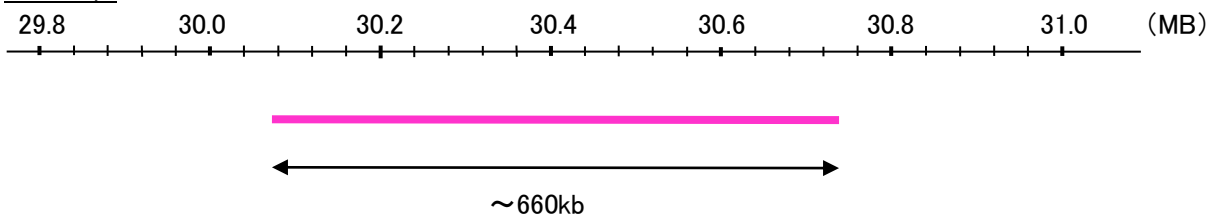
CENYq

Probe Size Approximately 470kb
Fluorophore TexRed
Location Yq11.221

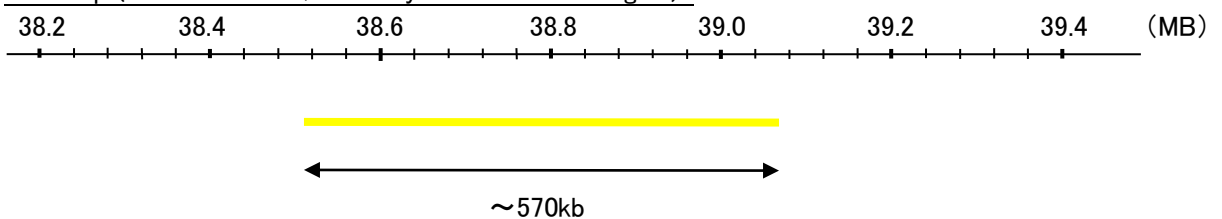
CEN13q

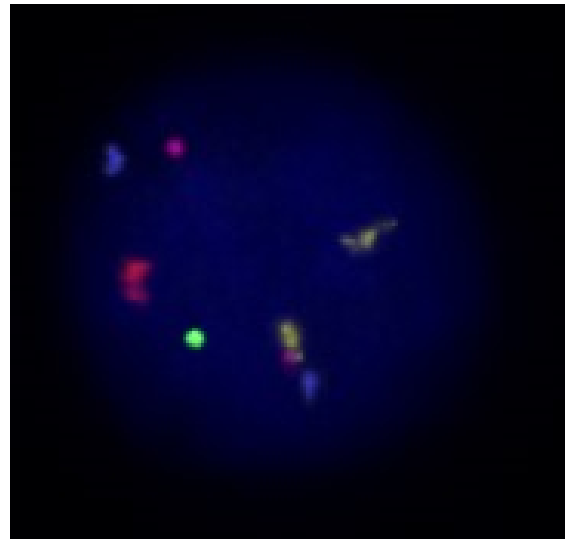
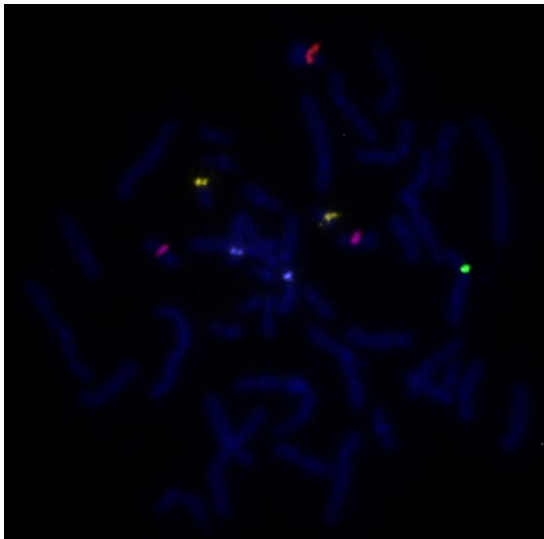
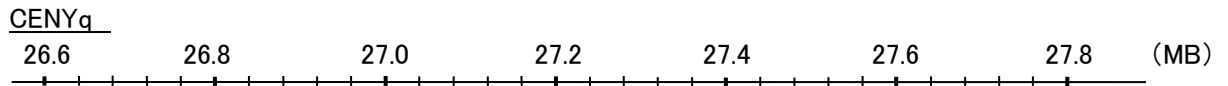
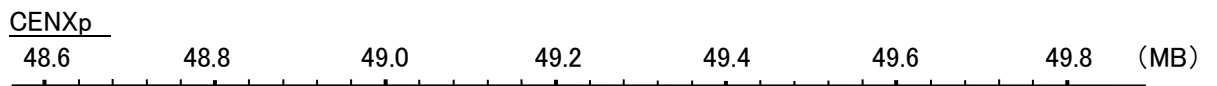


CEN18q



CEN21q (DYRK1A Gene /Down syndrome critical region)





Representative images of normal human cell (lymphocyte) stain with the dual color FISH probe. The left image is chromosomes at metaphase, and the right image is an interphase nucleus.