

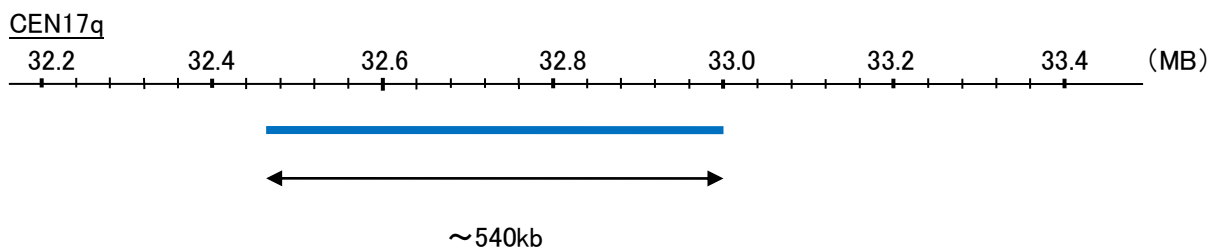
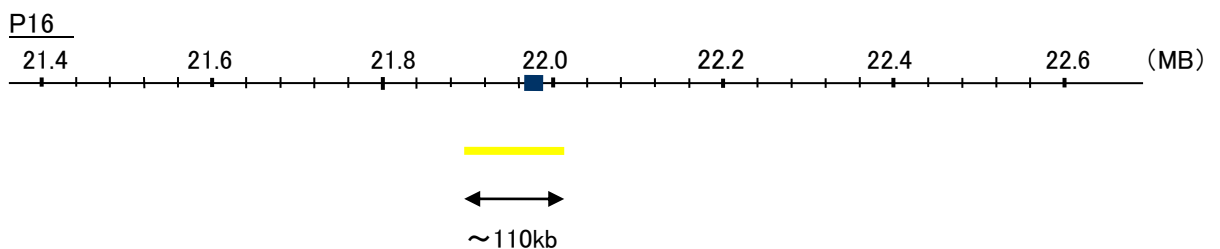
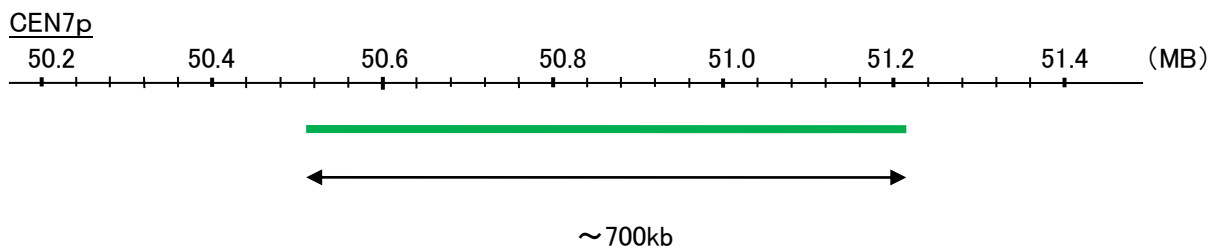
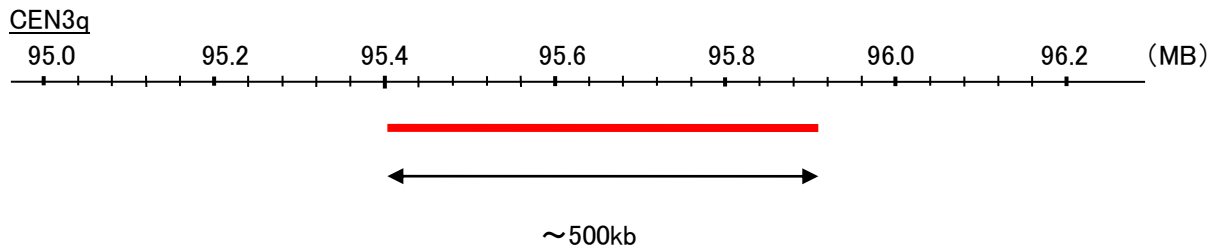
Probe 4-Color FISH Probe (CEN3q/CEN7p/p16/CEN17q)
Product No. CM4002

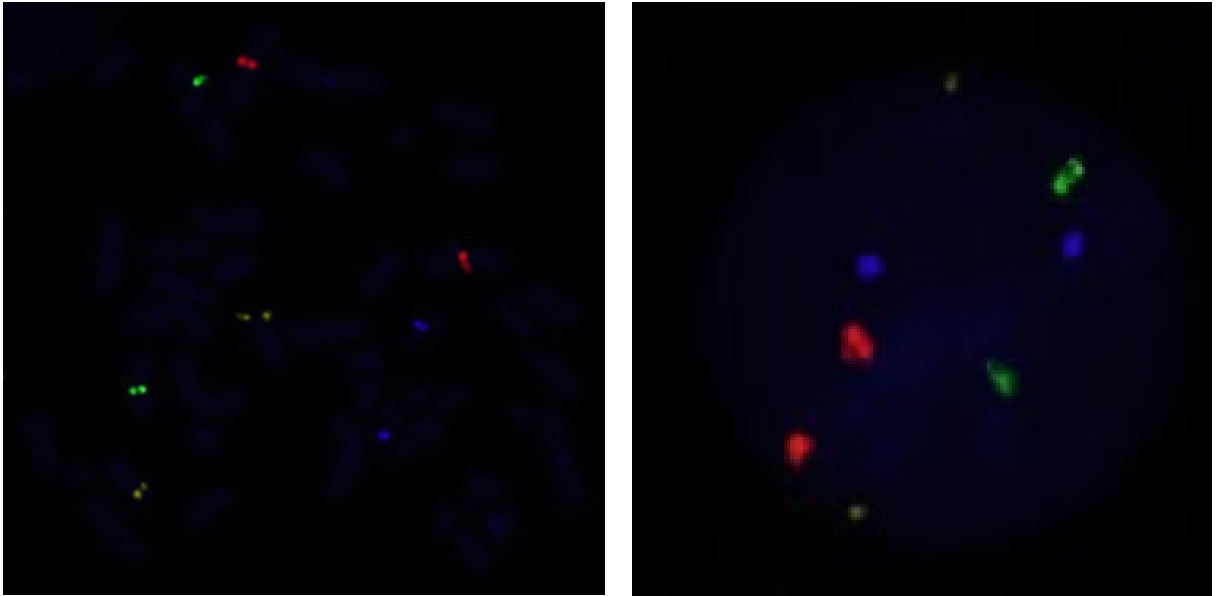
CEN3q
Probe Size Approximately 500kb
Fluorophore TexRed
Location 3q12.1

CEN7p
Probe Size Approximately 700kb
Fluorophore FITC
Location 7p12.1

P16
Probe Size Approximately 110kb
Fluorophore R6G
Fluorophore TexRed
Location 9p21

CEN17q
Probe Size Approximately 540kb
Fluorophore DEAC
Location 17q11.2





Representative images of normal human cell (lymphocyte) stain with the dual color FISH probe. The left image is chromosomes at metaphase, and the right image is an interphase nucleus.