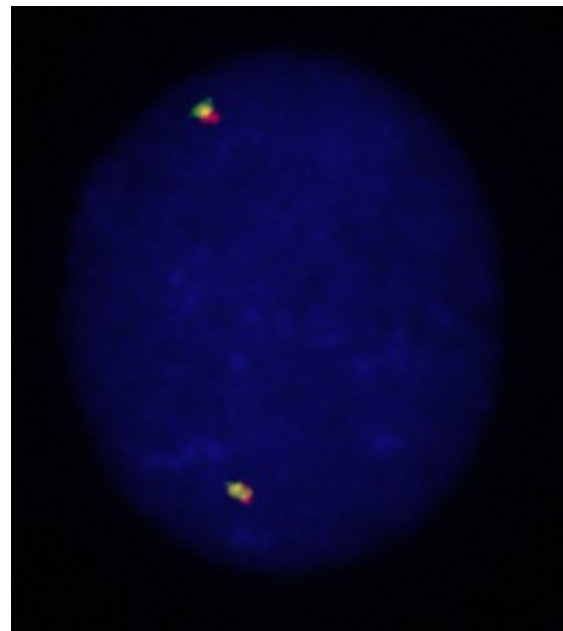
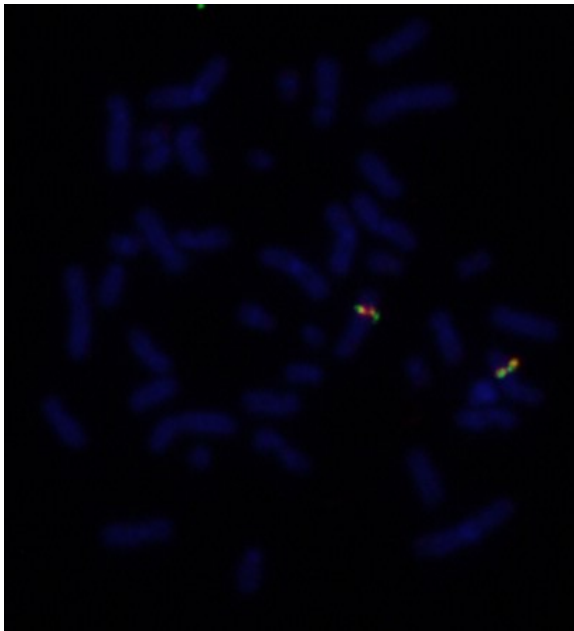
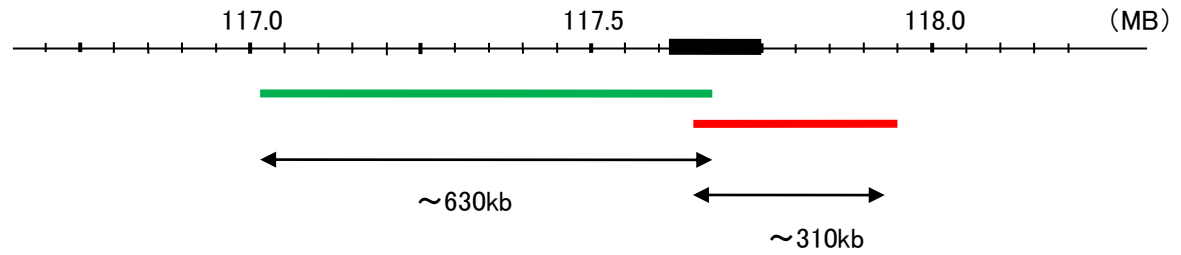


Probe ROS1 Split Dual Color FISH Probe (V.2)
Product No. SP022

ROS1

Fluorophore TexRed, FITC
Location 6q22.1
Also known as ROS; MCF3; c-ros-1

ROS1



Representative images of normal human cell (lymphocyte) stain with the dual color FISH probe. The left image is chromosomes at metaphase, and the right image is an interphase nucleus.