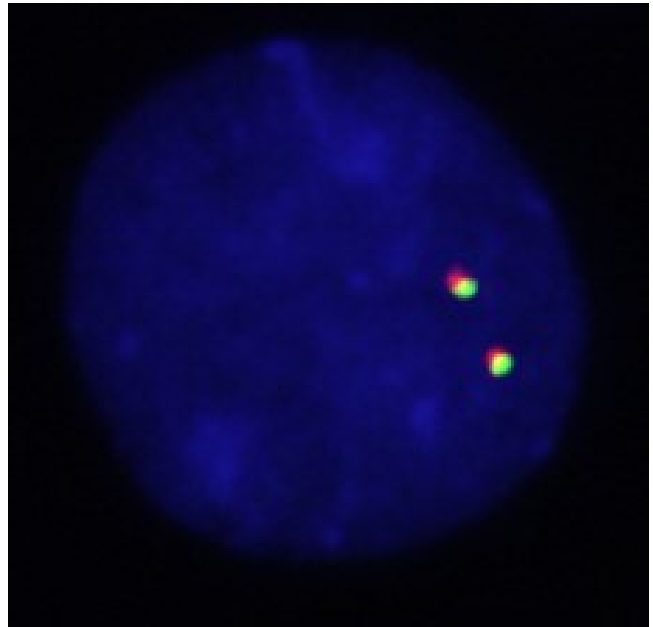
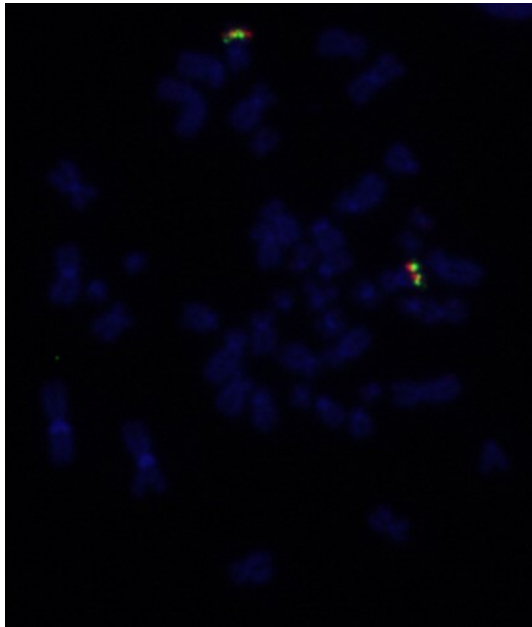
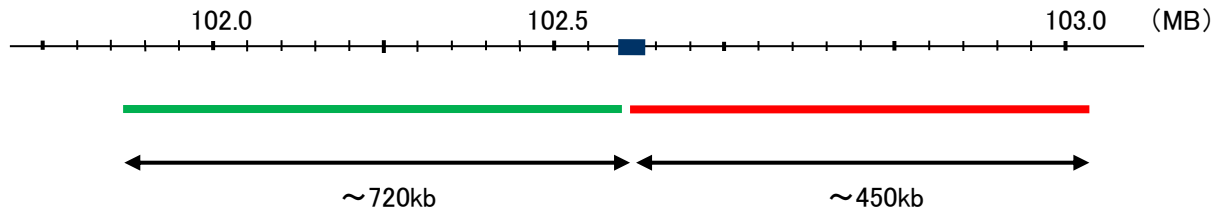


Probe NR4A3 Split Dual Color FISH Probe  
Product No. SP023

NR4A3

Fluorophore FITC, TexRed  
Location 9q22.3-q31.1  
Also known as CHN; TEC; CSMF; NOR1; MINOR

NR4A3



Representative images of normal human cell (lymphocyte) stain with the dual color FISH probe. The left image is chromosomes at metaphase, and the right image is an interphase nucleus.